

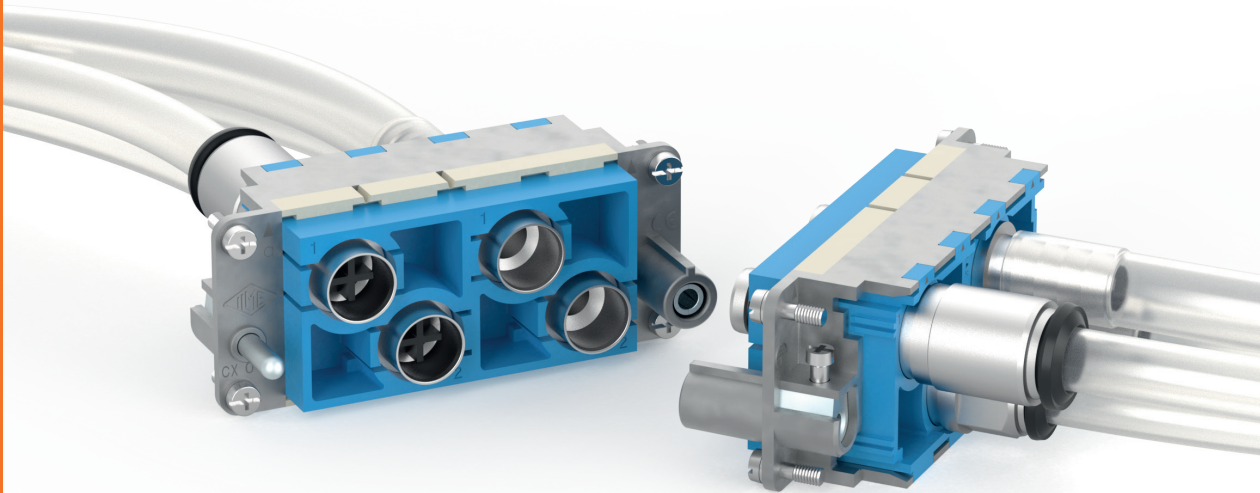


Multipole connectors



20 23

Newsbook
Extract 9/10



**MIXO PNEUMATIC
METAL CX 02 MPB**



TECHNICAL FEATURES

- Q Connector modules (male and female, due to asymmetric design) **for up to 2 metal removable pneumatic contacts** of any of the two **8.0** and **10** sizes available.
- Q Metal pneumatic contacts with hose barbs, push-over tube attachment, straight version (work on ID – inner diameter) for use with hoods with vertical cable outlet, or bulkhead mounting housings.
- Q Metal pneumatic contacts with quick-fitting, push-in tube attachment, straight version (work on OD – outer diameter) for use with hoods with vertical cable outlet, or bulkhead mounting housings.
- Q All **contacts are removable**, without damaging the module or the contact, by means of the **CMPEB B** dedicated removal tool.

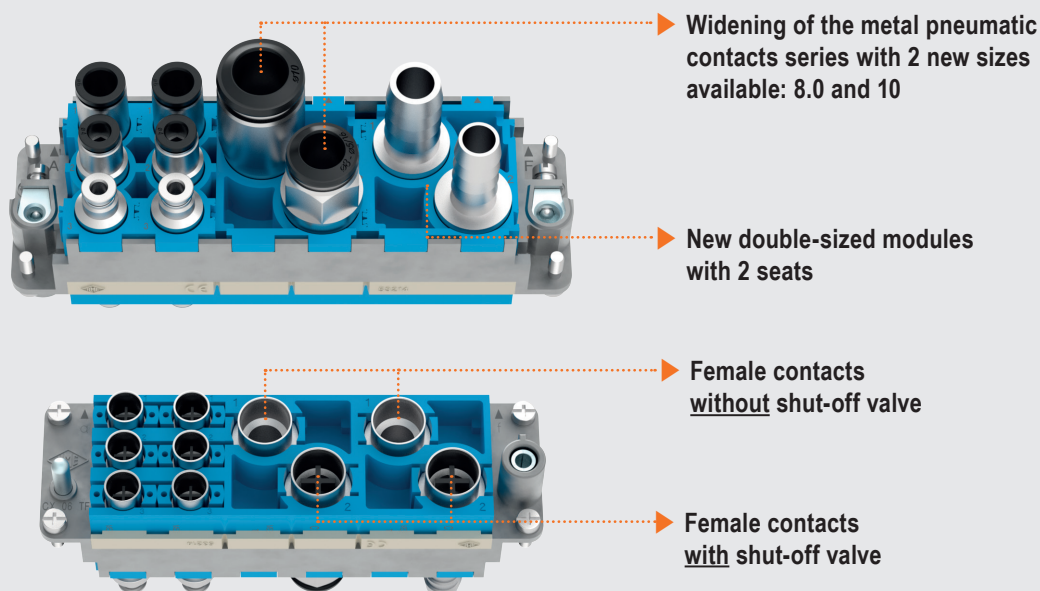
- Q For tubes Ø 8 mm and Ø 10 mm (see Table 1. below): outer diameter OD (push-in attachment of tubes to the quick-fitting contacts), or inner diameter ID (push-over attachment of tubes over barbed straight contacts).

CERTIFICATIONS

- cURus, CQC, DNV, BV, pending.
- **CE** and **UK CA** markings and EAC mark not applicable.
- **RoHS:**
 - pneumatic metal module: compliant without exemptions;
 - metal pneumatic contacts: compliant with exemption **6(c)**.

	Tube Ø 8 mm				Tube Ø 10 mm			
	hose barbs (ID - inner Ø)		quick-fitting (OD - outer Ø)		hose barbs (ID - inner Ø)		quick-fitting (OD - outer Ø)	
	Male	Female	Male	Female	Male	Female	Male	Female
Straight <u>without</u> shut-off valve	CX 8.0 MPM	CX 8.0 MPF	CX 8.0 MPQM	CX 8.0 MPQF	CX 10 MPM	CX 10 MPF	CX 10 MPQM	CX 10 MPQF
Straight <u>with</u> shut-off valve		CX 8.0 MPV		CX 8.0 MPQV		CX 10 MPV		CX 10 MPQV

Table 1. Pneumatic contacts





CX 02 MPB metal removable pneumatic contacts

The modular inserts must be installed in suitable frames, which are then mounted in traditional enclosures* or in COB panel supports

page:

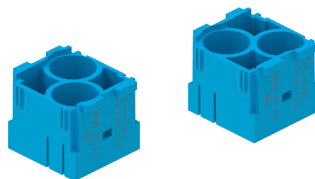
frames for modular units*

317

* enclosures: bulkhead mounting housings, hoods with vertical cable outlet

refer to CN.19 pages

modular units with 2 seats



Q 10 000 MATINGS WITH HNM FRAMES AND HNM ENCLOSURES

removal tool



description	part No.	part No.
-------------	----------	----------

without contacts (to be ordered separately)
 female insert with 2 housings, for tube \varnothing 8 - 10 mm
 male insert with 2 housings, for tube \varnothing 8 - 10 mm

[CX 02 MPBF](#)
[CX 02 MPBM](#)

removal tool
 for metal pneumatic contacts \varnothing 8 - 10 mm

[CMPES B](#)

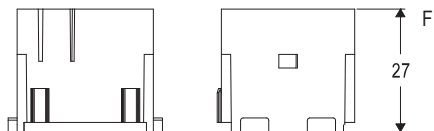
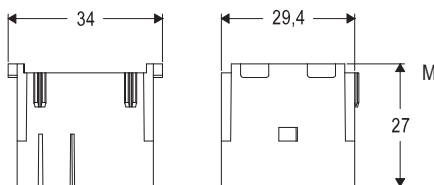
- UL, (ECBT2/8), DNV, BV pending
- insulation resistance: $\geq 10 \text{ G}\Omega$
- working temperature range: $-40 \text{ }^\circ\text{C} + +80 \text{ }^\circ\text{C}$
- made of self-extinguishing thermoplastic resin UL 94V-0
- mechanical life:
 ≥ 500 cycles with MIXO frames and enclosures or COB panel supports
 ≥ 10.000 cycles with HNM MIXO frames and enclosures

Use of units for metal pneumatic contacts

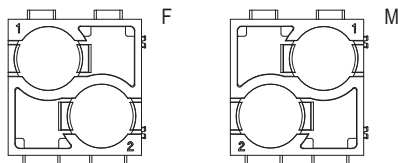
- pneumatic contacts for pressure values up to 10 bar, for use with clean and dry compressed air
- use of tubes with \varnothing 8 - 10 mm (ID inner \varnothing for hose barbs contacts, OD outer \varnothing for quick-fitting contacts), and possible replacement of tubes with assembled units
- possibility of using tubes with different diameters in the same modular unit
- female contacts with or without closing valve

Warnings:

- CRM/F CX coding and guiding pins must be used for pneumatic contacts modules.
- These pins also provide coding if pneumatic contacts modules are used exclusively.
- The use of pneumatic contacts requires an appropriate filtering and dehydration system to prevent dangerous condensation.



contacts side (front view)
 side with reference arrow ▲



CX 02 MPB metal removable pneumatic contacts

metal pneumatic contacts, straight
hose barbs, tube ID inner \varnothing 8 - 10 mm



metal pneumatic contacts, straight
quick-fitting, tube OD outer \varnothing 8 - 10 mm



description

part No.

part No.

hose barbs (ID inner \varnothing) male contacts
without shut-off valve
without shut-off valve

[CX 8.0 MPM](#)
[CX 10 MPM](#)

hose barbs (ID inner \varnothing) female contacts
without shut-off valve
without shut-off valve

[CX 8.0 MPF](#)
[CX 10 MPF](#)

hose barbs (ID inner \varnothing) female contacts
with shut-off valve
with shut-off valve

[CX 8.0 MPV](#)
[CX 10 MPV](#)

quick-fitting (OD outer \varnothing) male contacts
without shut-off valve
without shut-off valve

[CX 8.0 MPQM](#)
[CX 10 MPQM](#)

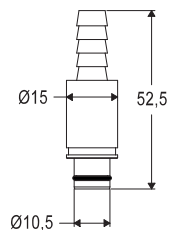
quick-fitting (OD outer \varnothing) female contacts
without shut-off valve
without shut-off valve

[CX 8.0 MPQF](#)
[CX 10 MPQF](#)

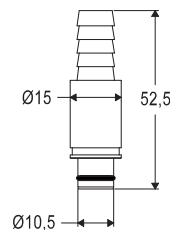
quick-fitting (OD outer \varnothing) female contacts
with shut-off valve
with shut-off valve

[CX 8.0 MPQV](#)
[CX 10 MPQV](#)

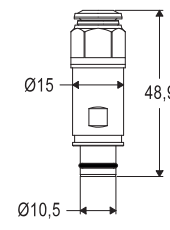
CX 8.0 MPM



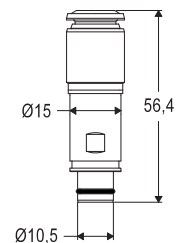
CX 10 MPM



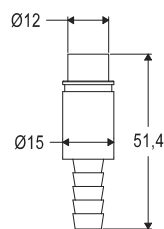
CX 8.0 MPQM



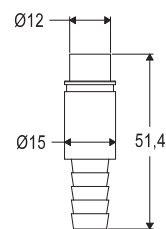
CX 10 MPQM



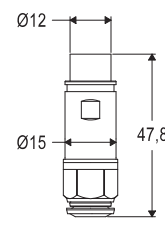
CX 8.0 MPF



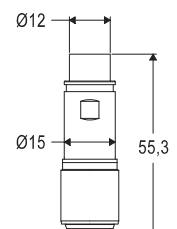
CX 10 MPF



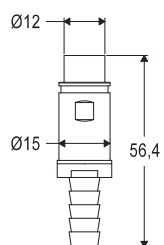
CX 8.0 MPQF



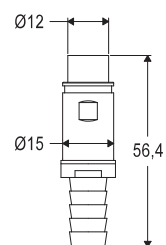
CX 10 MPQF



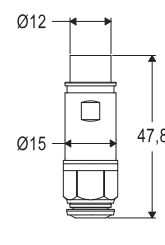
CX 8.0 MPV



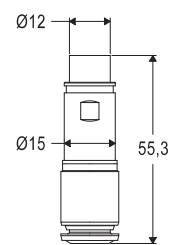
CX 10 MPV



CX 8.0 MPQV



CX 10 MPQV





ILME S.p.A.
Via Marco Antonio Colonna, 9
20149 Milano - Italy
www.ilme.com

XDGNE23 9/10

