



# Multipole connectors



datasheet

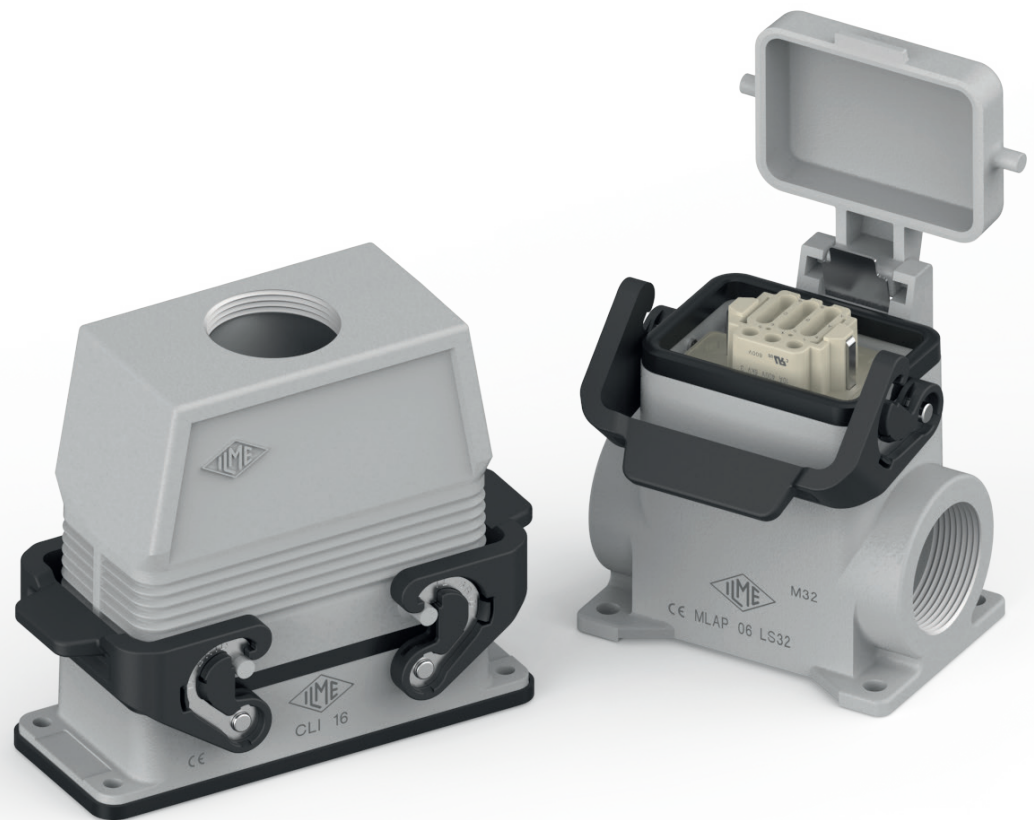
---

# 20 22

---

Newsbook

Extract 5/5



## IL-BRID LOCKING LEVERS STAINLESS STEEL CORE

## TECHNICAL FEATURES



Watch our  
technical clip

Specific industrial applications demand the design of equally customized connection solutions capable of covering each distinct installation requirement.

Among the enclosures' locking systems introduced by ILME in its product offer, the IL-BRID mechanism, a lever in thermoplastic material with a stainless-steel core, combines the technical characteristics of both these materials for durable but significantly low-wear design.

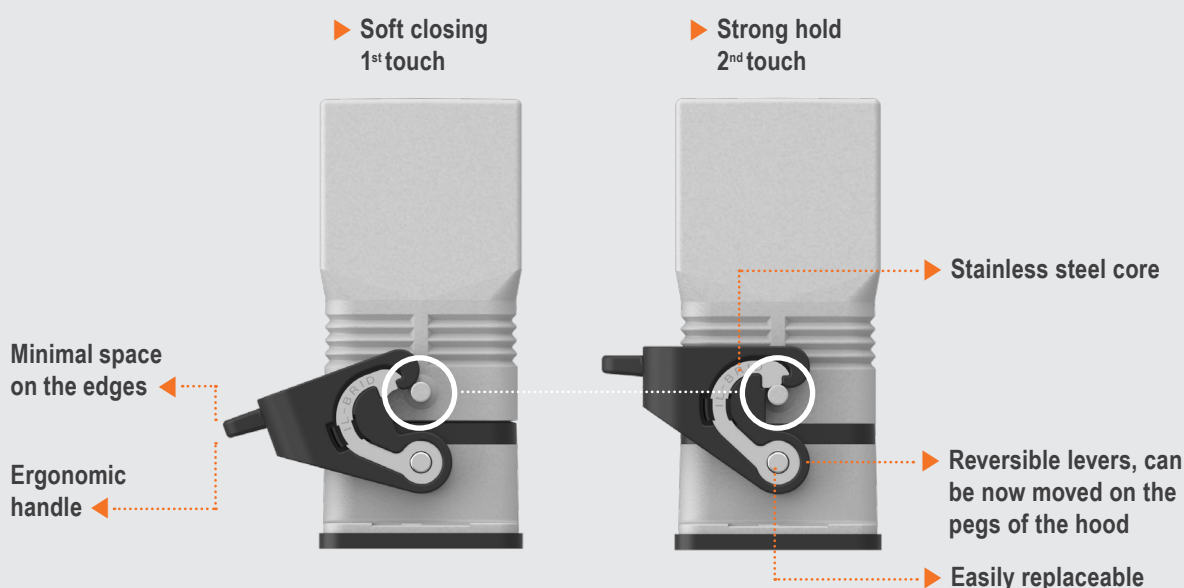
The **IL-BRID locking lever**, already introduced in the compact "CZ" and "MZ" size "49.16" and "66.16" enclosures series, is **now extended** to the whole ILME enclosures range for standard industrial applications, with the designation "**CL**" and "**ML**" in the bulkhead/surface mount housing or hood with lever versions, sizes "44.27", "57.27", "77.27" and "104.27".

The IL-BRID locking lever is **compatible** with the entire range of ILME enclosures with pegs (in single or double-lever configuration), offering an IP65 or IP66/IP69 degree of protection according to model.

The series, with standard metric M cable entries where foreseen, is also available, upon request, **with Pg or NPT cable entries** (surface housing or hood with levers).

Main technical and functional characteristics:

- Q **locking lever** made of self-extinguishing thermoplastic material (UL approved) and stainless-steel core;
- Q **improved closing mechanism** with reduced wear on the pegs of the enclosure's counterpart;
- Q **proprietary, ergonomic handles design** for an easy opening and closing operation;
- Q **IP65 or IP66/IP69** degree of protection according to EN 60529 (depending on model);
- Q **reduced occupation** of space on the outer edges thanks to a curved design;
- Q **reversibility of the lever** in the bulkhead housing versions (the locking levers can be moved on the counterpart hood).





# CL - ML Standard version with IL-BRID levers

inserts		page:
CDD	24 poles + ⊕	76
CDS	9 poles + ⊕	-
CDSH	9 poles + ⊕	86
CDSH NC	6 poles + ⊕	95
CNE	6 poles + ⊕	110
CSE	6 poles + ⊕	-
CSH	6 poles + ⊕	110
CSH S	6 poles + ⊕	122
CCE	6 poles + ⊕	130
CSS	6 poles + ⊕	148
CT, CTSE (16A)*	6 poles + ⊕	160
CQE	10 poles + ⊕	168
MIXO	2 modules	262 - 317

\* can be used only in bulkhead mounting housings

refer to CN.19 pages

## bulkhead mounting housings with single lever



FROM SEPTEMBER 2022

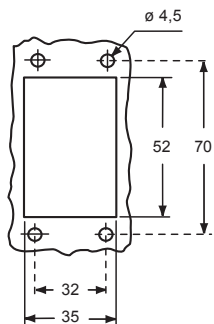
## surface mounting housings with single lever



FROM SEPTEMBER 2022

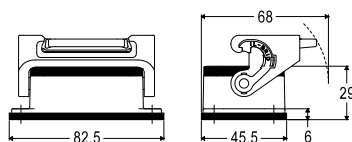
description	part No.	entry
with lever	CLI 06 L	
with lever and cover	CLI 06 LS	
with lever	MLP 06 L20	20
with lever	MLP 06 L220	20 x 2
with lever, high construction	MLAP 06 L25	25
with lever, high construction	MLAP 06 L225	25 x 2
with lever, high construction	MLAP 06 L32	32
with lever, high construction	MLAP 06 L32	32 x 2
with lever, high construction	MLAP 06 L40	40
with lever, high construction	MLAP 06 L240	40 x 2
with lever and cover	MLP 06 LS20	20
with lever and cover	MLP 06 LS220	20 x 2
with lever and cover, high construction	MLAP 06 LS32	32
with lever and cover, high construction	MLAP 06LS232	32 x 2
with lever and cover, high construction	MLAP 06 LS40	40
with lever and cover, high construction	MLAP 06LS240	40 x 2

### panel cut-out for bulkhead mounting housings

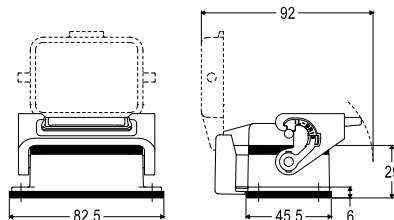


**IMPORTANT NOTE:** The enclosures ensure IP66/IP69 degree of protection (or IP65 for hinged cover versions) when mated and locked with the closing levers.

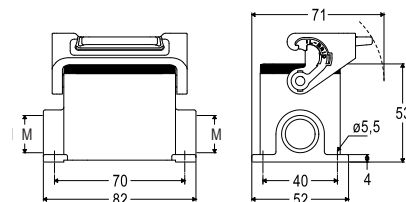
### CLI 06 L ▲



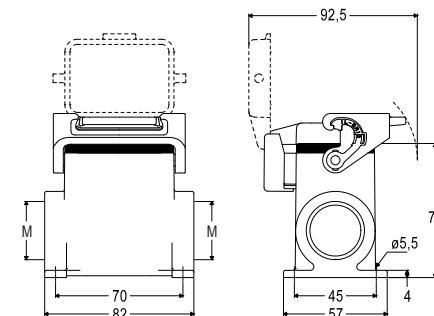
### CLI 06 LS ●



### MLP 06 L



### MLAP 06 LS ●



cURus  
Type 4/4X/12 pending  
(except enclosures with plastic cover)

insulating cable gland or fittings without gasket

cable gland with O-Ring gasket

# ML – MLA Standard version with IL-BRID levers

<b>inserts</b>		<b>page:</b>
CDD	24 poles + ⊕	76
CDS	9 poles + ⊕	-
CDSH	9 poles + ⊕	86
CDSH NC	6 poles + ⊕	95
CNE	6 poles + ⊕	110
CSE	6 poles + ⊕	-
CSH	6 poles + ⊕	110
CSH S	6 poles + ⊕	122
CCE	6 poles + ⊕	130
CSS	6 poles + ⊕	148
CQE	10 poles + ⊕	168
MIXO	2 modules	262 - 317

## hoods with 1 lever



FROM SEPTEMBER 2022

## hoods with 1 lever

M40 cable entry with 20 mm thread length



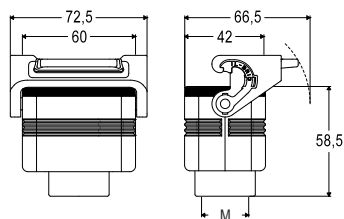
FROM SEPTEMBER 2022

refer to CN.19 pages

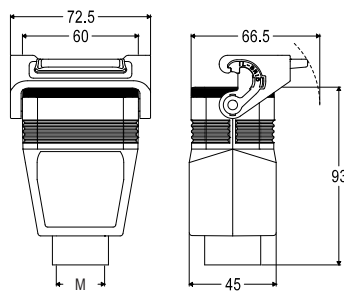
description	part No.	entry M	part No.	entry M
with lever, top entry	<b>MLV 06 LG25</b>	25		
with lever, top entry, high construction	<b>MLAV 06 LG25</b>	25		
with lever, top entry, high construction	<b>MLAV 06 LG32</b>	32		
with lever, side entry, high construction, without adapter <sup>1)</sup>			<b>MLFO 06 LG40</b>	40
with lever, top entry, high construction, without adapter <sup>1)</sup>	<b>MLFV 06 LG25</b>	25		
with lever, top entry, high construction, without adapter <sup>1)</sup>	<b>MLFV 06 LG32</b>	32		
with lever, top entry, high construction, without adapter <sup>1)</sup>	<b>MLFV 06 LG40</b>	40		

<sup>1)</sup> enclosure without adapter, threaded on the body, to be used only with a complete cable gland.

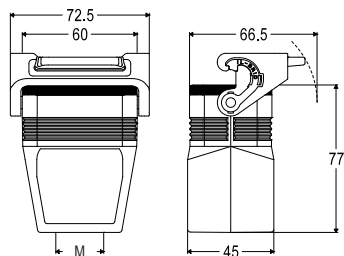
### MLV 06 LG



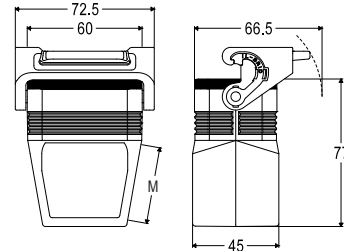
### MLAV 06 LG



### MLFV 06 LG



### MLFO 06 LG



cURus  
Type 4/4X/12 pending

insulating cable gland or fittings without gasket

cable gland with O-Ring gasket



# CL - ML Standard version with IL-BRID levers

inserts		page:
CDD	42 poles + ⊕	78
CDS	18 poles + ⊕	-
CDSH	18 poles + ⊕	87
CNE	10 poles + ⊕	111
CSE	10 poles + ⊕	-
CSH	10 poles + ⊕	111
CSH S	10 poles + ⊕	123
CCE	10 poles + ⊕	131
CMSH	3+2 (aux) poles + ⊕	136
CMCE	3+2 (aux) poles + ⊕	137
CSS	10 poles + ⊕	149
CT, CTSE (16A)*	10 poles + ⊕	161
CQE	18 poles + ⊕	169
CX	8/24 poles + ⊕	194
MIXO	3 modules	262 - 317

\* can be used only in bulkhead mounting housing

refer to CN.19 pages

## bulkhead mounting housings with 2 levers



**FROM SEPTEMBER 2022**

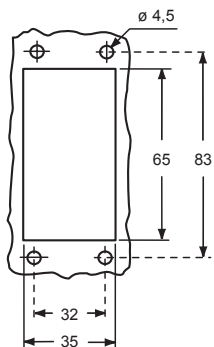
## surface mounting housings with 2 levers



**FROM SEPTEMBER 2022**

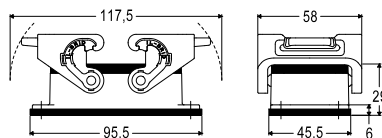
description	part No.	entry M
with levers	<b>CLI 10</b>	
with levers	<b>MLP 10.20</b>	20
with levers	<b>MLP 10.220</b>	20 x 2
with levers, high construction	<b>MLAP 10.25</b>	25
with levers, high construction	<b>MLAP 10.225</b>	25 x 2
with levers, high construction	<b>MLAP 10.32</b>	32
with levers, high construction	<b>MLAP 10.232</b>	32 x 2
with levers, high construction	<b>MLAP 10.40</b>	40
with levers, high construction	<b>MLAP 10.240</b>	40 x 2

### panel cut-out for bulkhead mounting housings

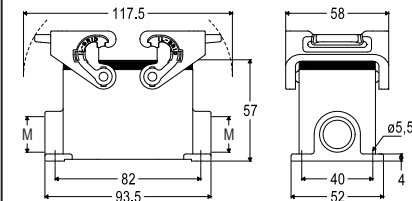


**IMPORTANT NOTE:** The enclosures ensure IP66/IP69 degree of protection (or IP65 for hinged cover versions) when mated and locked with the closing levers.

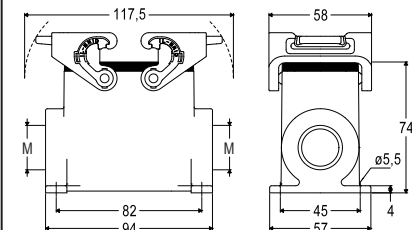
### CLI 10 ▲



### MLP 10.220



### MLAP 10.225



cURus  
Type 4/4X/12 pending

insulating cable gland or fittings without gasket

cable gland with O-Ring gasket

# ML – MLA Standard version with IL-BRID levers

<b>inserts</b>		<b>page:</b>
CDD	42 poles + ⊕	78
CDS	18 poles + ⊕	-
CDSH	18 poles + ⊕	87
CNE	10 poles + ⊕	111
CSE	10 poles + ⊕	-
CSH	10 poles + ⊕	111
CSH S	10 poles + ⊕	123
CCE	10 poles + ⊕	131
CMSH	3+2 (aux) poles + ⊕	136
CMCE	3+2 (aux) poles + ⊕	137
CSS	10 poles + ⊕	149
CQE	18 poles + ⊕	169
CX	8/24 poles + ⊕	194
MIXO	3 modules	262 - 317

## hoods with 2 levers



FROM SEPTEMBER 2022

## hoods with 2 lever

M40 cable entry with 20 mm thread length



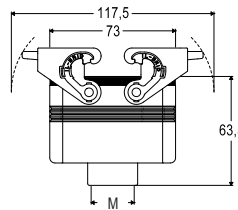
FROM SEPTEMBER 2022

refer to CN.19 pages

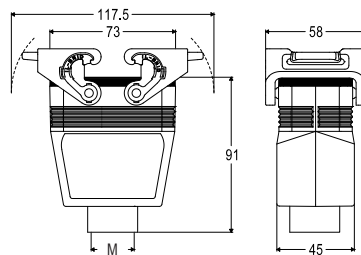
description	part No.	entry M	part No.	entry M
with levers, top entry	<b>MLV 10 G25</b>	25		
with levers, top entry, high construction	<b>MLAV 10 G25</b>	25		
with levers, top entry, high construction	<b>MLAV 10 G32</b>	32		
with levers, top entry, high construction	<b>MLAV 10 G40</b>	40		
with levers, side entry, high construction, without adapter <sup>1)</sup>			<b>MLFO 10 G40</b>	40
with levers, top entry, high construction, without adapter <sup>1)</sup>	<b>MLFV 10 G25</b>	25		
with levers, top entry, high construction, without adapter <sup>1)</sup>	<b>MLFV 10 G32</b>	32		
with levers, top entry, high construction, without adapter <sup>1)</sup>	<b>MLFV 10 G40</b>	40		

<sup>1)</sup> enclosure without adapter, threaded on the body, to be used only with a complete cable gland.

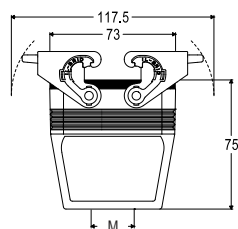
### MLV 10 G



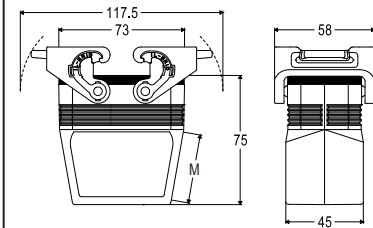
### MLAV 10 G



### MLFV 10 G



### MLFO 10 G



cURus  
Type 4/4X/12 pending



insulating cable gland or fittings  
without gasket



cable gland  
with O-Ring gasket



# CL - ML Standard version with IL-BRID levers

inserts		page:
CD	40 poles + ⊕	70
CDD	72 poles + ⊕	79
CDS	27 poles + ⊕	-
CDSH	27 poles + ⊕	88
CNE	16 poles + ⊕	112
CSE	16 poles + ⊕	-
CSH	16 poles + ⊕	112
CSH S	16 poles + ⊕	124
CCE	16 poles + ⊕	132
CMSH, CMCE	6+2 (aux) poles + ⊕	138 - 139
CSS	16 poles + ⊕	150
CT, CTS (10A)*	40 poles + ⊕	156
CT, CTSE (16A)*	16 poles + ⊕	162
CQE	32 poles + ⊕	170
CQEE	40 poles + ⊕	176
CP	6 poles + ⊕	178
CX	6/12, 6/36 and 12/2 poles + ⊕	197 - 199
CX	4/0 and 4/2 poles + ⊕	200 - 201
MIXO	4 modules	262 - 317

\* can be used only in bulkhead mounting housings

refer to CN.19 pages

## bulkhead mounting housings with 2 levers



**FROM SEPTEMBER 2022**

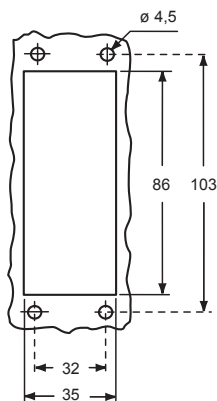
## surface mounting housings with 2 levers



**FROM SEPTEMBER 2022**

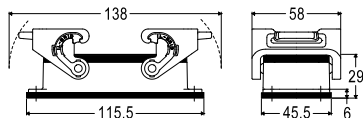
description	part No.	entry
with levers	CLI 16	
with levers	MLP 16.25	25
with levers	MLP 16.225	25 x 2
with levers, high construction	MLAP 16.25	25
with levers, high construction	MLAP 16.225	25 x 2
with levers, high construction	MLAP 16.32	32
with levers, high construction	MLAP 16.232	32 x 2
with levers, high construction	MLAP 16.40	40
with levers, high construction	MLAP 16.240	40 x 2

### panel cut-out for bulkhead mounting housings

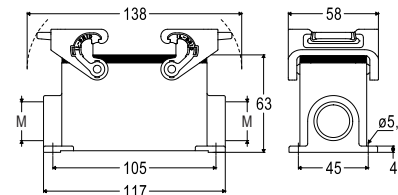


**IMPORTANT NOTE:** The enclosures ensure IP66/IP69 degree of protection (or IP65 for hinged cover versions) when mated and locked with the closing levers.

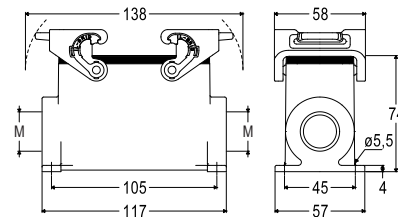
### CLI 16 ▲



### MLP 16



### MLAP 16



cURus  
Type 4/4X/12 pending

insulating cable gland or fittings without gasket

cable gland with O-Ring gasket

# ML – MLA Standard version with IL-BRID levers

inserts		page:
CD	40 poles + ⊕	70
CDD	72 poles + ⊕	79
CDS	27 poles + ⊕	-
CDSH	27 poles + ⊕	88
CNE	16 poles + ⊕	112
CSE	16 poles + ⊕	-
CSH	16 poles + ⊕	112
CSH S	16 poles + ⊕	124
CCE	16 poles + ⊕	132
CMSH, CMCE	6+2 (aux) poles + ⊕	138 - 139
CSS	16 poles + ⊕	150
CQE	32 poles + ⊕	170
CQEE	40 poles + ⊕	176
CP	6 poles + ⊕	178
CX	6/12, 6/36 and 12/2 poles + ⊕	197 - 199
CX	4/0 and 4/2 poles + ⊕	200 - 201
MIXO	4 modules	262 - 317

refer to CN.19 pages

## hoods with 2 levers



**FROM SEPTEMBER 2022**

## hoods with 2 lever

M40 cable entry with 20 mm thread length

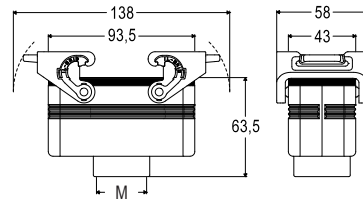


**FROM SEPTEMBER 2022**

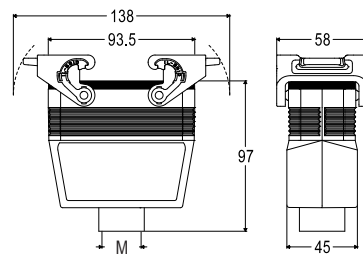
description	part No.	entry M	part No.	entry M
with levers, top entry	<b>MLV 16 G32</b>	32		
with levers, top entry, high construction	<b>MLAV 16 G25</b>	25		
with levers, top entry, high construction	<b>MLAV 16 G32</b>	32		
with levers, top entry, high construction	<b>MLAV 16 G40</b>	40		
with levers, side entry, high construction, without adapter <sup>1)</sup>			<b>MLFO 16 G40</b>	40
with levers, top entry, high construction, without adapter <sup>1)</sup>	<b>MLFV 16 G25</b>	25		
with levers, top entry, high construction, without adapter <sup>1)</sup>	<b>MLFV 16 G32</b>	32		
with levers, top entry, high construction, without adapter <sup>1)</sup>	<b>MLFV 16 G40</b>	40		

<sup>1)</sup> enclosure without adapter, threaded on the body, to be used only with a complete cable gland.

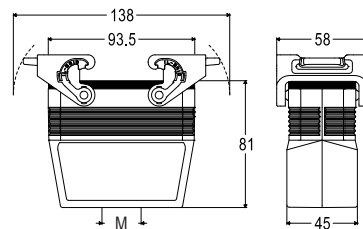
### MLV 16 G



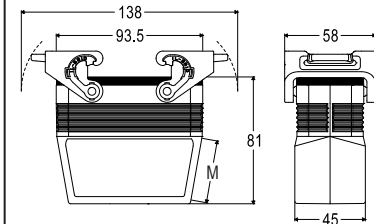
### MLAV 16 G



### MLFV 16 G



### MLFO 16 G



cURus  
Type 4/4X/12 pending



insulating cable gland or fittings without gasket



cable gland with O-Ring gasket





# CL - ML Standard version with IL-BRID levers

inserts		page:
CD	64 poles + ⊕	72
CDD	108 poles + ⊕	81
CDS	42 poles + ⊕	-
CDSH	42 poles + ⊕	89
CNE	24 poles + ⊕	113
CSE	24 poles + ⊕	-
CSH	24 poles + ⊕	113
CSH S	24 poles + ⊕	125
CCE	24 poles + ⊕	133
CMSH	10+2 (aux) poles + ⊕	140
CMCE	10+2 (aux) poles + ⊕	141
CSS	24 poles + ⊕	151
CT, CTS (10A)*	64 poles + ⊕	157
CT, CTSE (16A)*	24 poles + ⊕	163
CQE	46 poles + ⊕	171
CQEE	64 poles + ⊕	177
CX	4/8 and 6/6 poles + ⊕	204 and 206
MIXO	6 modules	262 - 317

\* can be used only in bulkhead mounting housings

refer to CN.19 pages

## bulkhead mounting housings with 2 levers



**FROM SEPTEMBER 2022**

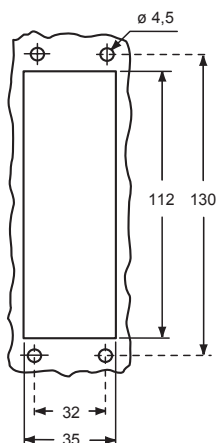
## surface mounting housings with 2 levers



**FROM SEPTEMBER 2022**

description	part No.	entry
with levers	CLI 24	
with levers	MLP 24.25	25
with levers	MLP 24.225	25 x 2
with levers, high construction	MLAP 24.25	25
with levers, high construction	MLAP 24.225	25 x 2
with levers, high construction	MLAP 24.32	32
with levers, high construction	MLAP 24.232	32 x 2
with levers, high construction	MLAP 24.40	40
with levers, high construction	MLAP 24.240	40 x 2

### panel cut-out for bulkhead mounting housings



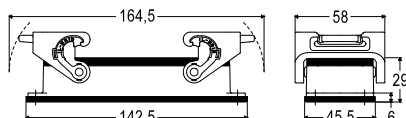
**IMPORTANT NOTE:** The enclosures ensure IP66/IP69 degree of protection (or IP65 for hinged cover versions) when mated and locked with the closing levers.

cURus  
Type 4/4X/12 pending

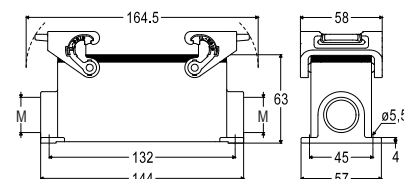
insulating cable gland or fittings without gasket

cable gland with O-Ring gasket

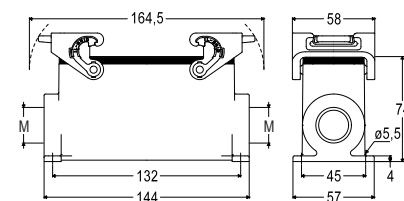
### CLI 24 ▲



### MLP 24



### MLAP 24



# ML – MLA Standard version with IL-BRID levers

inserts		page:
CD	64 poles + ⊕	72
CDD	108 poles + ⊕	81
CDS	42 poles + ⊕	-
CDSH	42 poles + ⊕	89
CNE	24 poles + ⊕	113
CSE	24 poles + ⊕	-
CSH	24 poles + ⊕	113
CSH S	24 poles + ⊕	125
CCE	24 poles + ⊕	133
CMSH	10+2 (aux) poles + ⊕	140
CMCE	10+2 (aux) poles + ⊕	141
CSS	24 poles + ⊕	151
CQE	46 poles + ⊕	171
CQEE	64 poles + ⊕	177
CX	4/8 and 6/6 poles + ⊕	204 and 206
MIXO	6 modules	262 - 317

refer to CN.19 pages

## hoods with 2 levers



**FROM SEPTEMBER 2022**

## hoods with 2 lever

M40 cable entry with 20 mm thread length

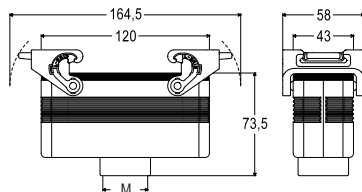


**FROM SEPTEMBER 2022**

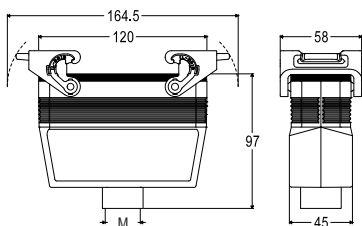
description	part No.	entry M	part No.	entry M
with levers, top entry	<b>MLV 24 G32</b>	32		
with levers, top entry, high construction	<b>MLAV 24 G25</b>	25		
with levers, top entry, high construction	<b>MLAV 24 G32</b>	32		
with levers, top entry, high construction	<b>MLAV 24 G40</b>	40		
with levers, side entry, high construction, without adapter <sup>1)</sup>			<b>MLFO 24 G40</b>	40
with levers, top entry, high construction, without adapter <sup>1)</sup>	<b>MLFV 24 G25</b>	25		
with levers, top entry, high construction, without adapter <sup>1)</sup>	<b>MLFV 24 G32</b>	32		
with levers, top entry, high construction, without adapter <sup>1)</sup>	<b>MLFV 24 G40</b>	40		

<sup>1)</sup> enclosure without adapter, threaded on the body, to be used only with a complete cable gland.

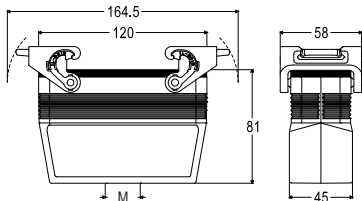
### MLV 24 G



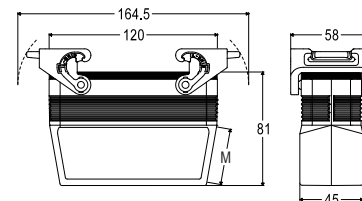
### MLAV 24 G



### MLFV 24 G



### MLFO 24 G



cURus  
Type 4/4X/12 pending

insulating cable gland or fittings without gasket

cable gland with O-Ring gasket



**ILME S.p.A.**  
Via Marco Antonio Colonna, 9  
20149 Milano - Italy  
[www.ilme.com](http://www.ilme.com)

XDGNE22 5/5

