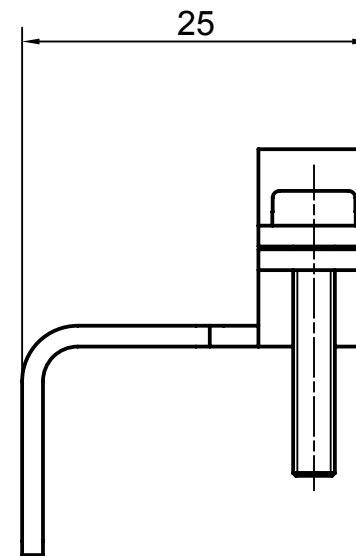
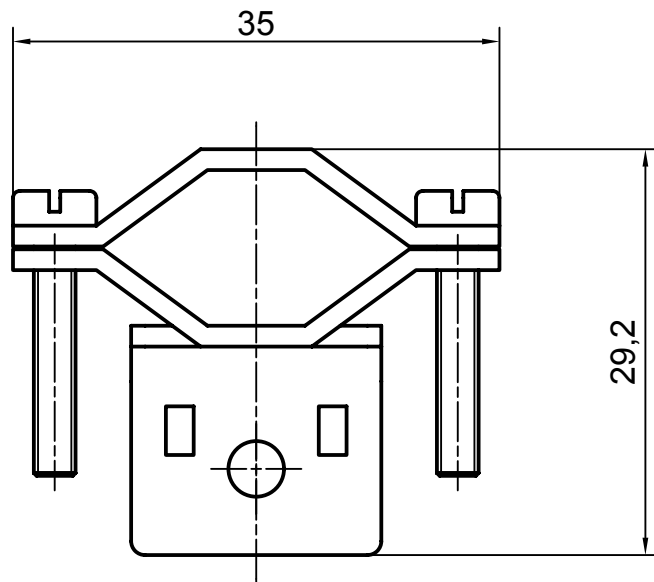



Diritti riservati

All rights reserved



Anmerkung: für Kabel, Leitungen oder Bündel
 \varnothing min. = 12 mm bis \varnothing max. = 23 mm

Note: for conductor groups or cable with
n min = 12 mm and max = 23 mm

Date 10.01.2007	CRAS	Scale	
Sign.	straight cable clamping plate	2:1	