

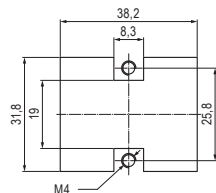
| Suitable inserts | Rated current (A) | Rated voltage (V) | Rated impulse voltage (kV) |
|---------------------|-------------------|-------------------|----------------------------|
| ▲ CX 01 GF/M * | 100 | 500 | 6 |
| ▲ CX 02 7F/M ** | 70 | 690 | 6 |
| ▲ CX 02 4AF/M | 40 | 690 | 6 |
| ▲ CX 02 4BF/M | 40 | 690 | 6 |
| ▲ CX 02 4F/M | 40 | 690 | 6 |
| CX 03 4F/M | 40 | 400 / 690 | 6 |
| CX 03 4BF/M | 40 | 500 | 6 |
| ▲ CX 3/4 XDF/M | 40 / 10 | 690 | 6 |
| ▲ CX 04 XF/M | 40 | 690 | 6 |
| CX 05 SF/M | 16 | 400 | 6 |
| CX 05 SHF/M | 16 | 400 | 6 |
| CX 06 CF/M | 16 | 500 | 6 |
| CX 06P CF/M | 16 | 690 | 6 |
| CX 06 CYF/M | 16 | 500 | 6 |
| CX 08 CYF/M | 16 | 400 | 6 |
| CX 12 DF/M | 10 | 250 | 4 |
| CX 12 DYF/M | 10 | 250 | 4 |
| CX 17 DF/M | 10 | 160 | 2,5 |
| CX 01 9VF/M | 5 | 50 | 0,8 |
| CX 01 9VTF | 5 | 50 | 0,8 |
| CX 01 9VF2/M2 | 5 | 50 | 0,8 |
| CX 08 16F/M | 5 | 50 | 0,8 |
| CX 08 16GF/M | 5 | 50 | 0,8 |
| CX 25 1BF/M | 4 | 50 | 0,8 |
| CX 36 1F/M | 4 | 32 | 0,8 |
| CX 20S 1F/M | 4 | 32 | 0,8 |
| CX 20S 1GF/M | 4 | 32 | 0,8 |
| CX 04 RF/M | — | — | 0,8 |
| CX 01 J8AIF/BIF/PIF | 1 | 50 | 0,8 |
| CX 01 J8F/M/IM | — | — | 0,8 |
| CX 01 J8UM | — | — | 0,8 |
| CX 04 LF/M | — | — | — |
| CX 04 SCF/M | — | — | — |
| CX 03 MP | — | — | — |
| CX 03 P | — | — | — |
| CX 02 P | — | — | — |
| CX FM | — | — | — |

▲ Reduced rated voltage and rated impulse voltage.

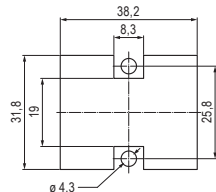
* **CX 01 GF/M** limited to use up to 500 V 6 kV with CGFA/MA 10 contacts. Wiring with CG contacts of larger size is possible only if used in ELV ($\leq 50 V_{AC}/120 V_{DC}$, not requiring PE).

** **CX 02 7F/M** limited to use up to 690 V 6 kV with CX7FA/MA 6.0 or 10 contacts. Wiring with CX7 contacts of larger size is possible only if used in ELV ($\leq 50 V_{AC}/120 V_{DC}$, not requiring PE).

Panel cut-out, threaded panel



Panel cut-out, through-hole panel (max. panel thickness: 6 mm)



Tightening torque 1,2 Nm

Ph1 or 1,0 × 5,5

