

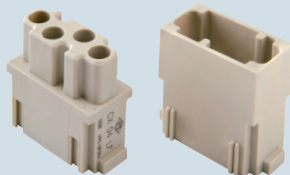
the modular inserts must be installed in suitable frames which are then mounted in traditional housings or COB panel support

frames for modular units ..... page: 151\*

- to crimp contacts CX 50 M/F, CX 75 M/F use tool COPZ
- in accordance with standard DIN 41625 part 2
- finishing: contact surfaces and body gold plated, back end and ferrule nickel plated
- frequency range:  $\leq 2$  GHz
- reflection coefficient:  $\leq 0,1$
- rated voltage: 50V
- rated current: 1.5A

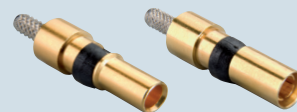
\* refer to catalogue page CN.07

modular units,  
crimp / solder connections



**NEW**

crimp / solder coaxial contacts

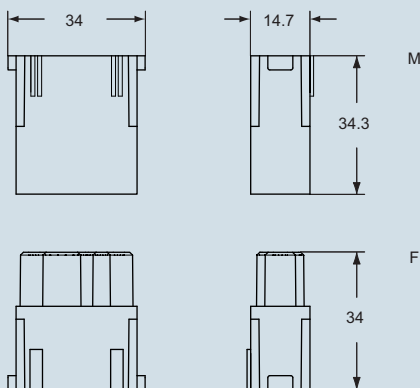


**NEW**

description	part No.	part No.
without contacts (to be ordered separately) - female inserts for female contacts - male inserts for male contacts	<b>CX 04 LF</b> <b>CX 04 LM</b>	
female coaxial contacts 50Ω male coaxial contacts 50Ω		<b>CX 50 F</b> <b>CX 50 M</b>
female coaxial contacts 75Ω male coaxial contacts 75Ω		<b>CX 75 F</b> <b>CX 75 M</b>

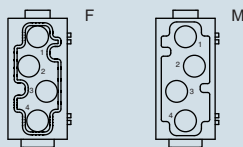
dimensions in mm

**CX 04 LF / LM**



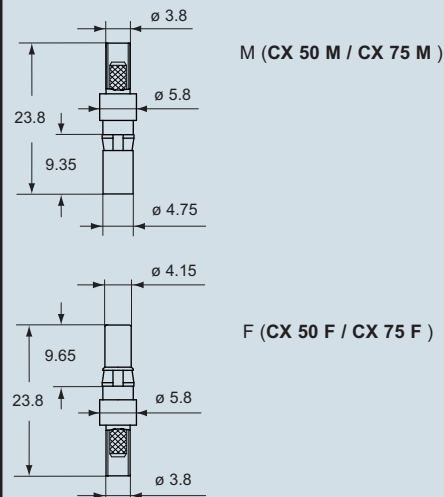
contacts side (front view)

side with reference arrow ▲

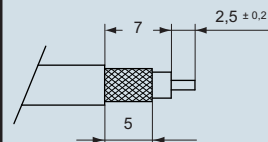


- 1 frame slot

dimensions in mm



conductor stripping



coaxial contacts	for cables	ø external	part No.
50Ω	RG 316/U	2,49 ±0,1	CX 50 F
	RG 174/U	2,79 ±0,127	CX 50 M
	RG 188 A/U	2,79 max	
75Ω	RG 179 B/U	2,54 ±0,127	CX 75 F
	RG 187 A/U	2,79 max	CX 75 M
	TZC 75 101	2,79 max	

for contacts series:	page
<b>CX 50 F/M</b> .....	6
<b>CX 75 F/M</b> .....	6

**manual crimping tool**



**removal tool**



description	part No.	part No.
crimping tool for <b>CX 50 F/M</b> and <b>CX 75 F/M</b> coaxial contacts	<b>COPZ</b>	
removal tool for the extraction of contacts from the CX L inserts		<b>CLES</b>

**Crimping instructions**

- 1) strip the cable as per drawing (page 6)
- 2) crimp the central contact of coaxial connector with the position 0.7 of crimping tool
- 3) insert the central contact in the coaxial connector, put the braid shield around the back cylinder of contact
- 4) insert the brass back end on the braid shield
- 5) crimp the ferrule with position 3.25 of crimping tool

We recommend the use of code pins CRF CX / CRM CX.

As alternative to crimping, it is possible to solder the central contact.

**CX 50 F/M and CX 75 F/M coaxial contacts**

