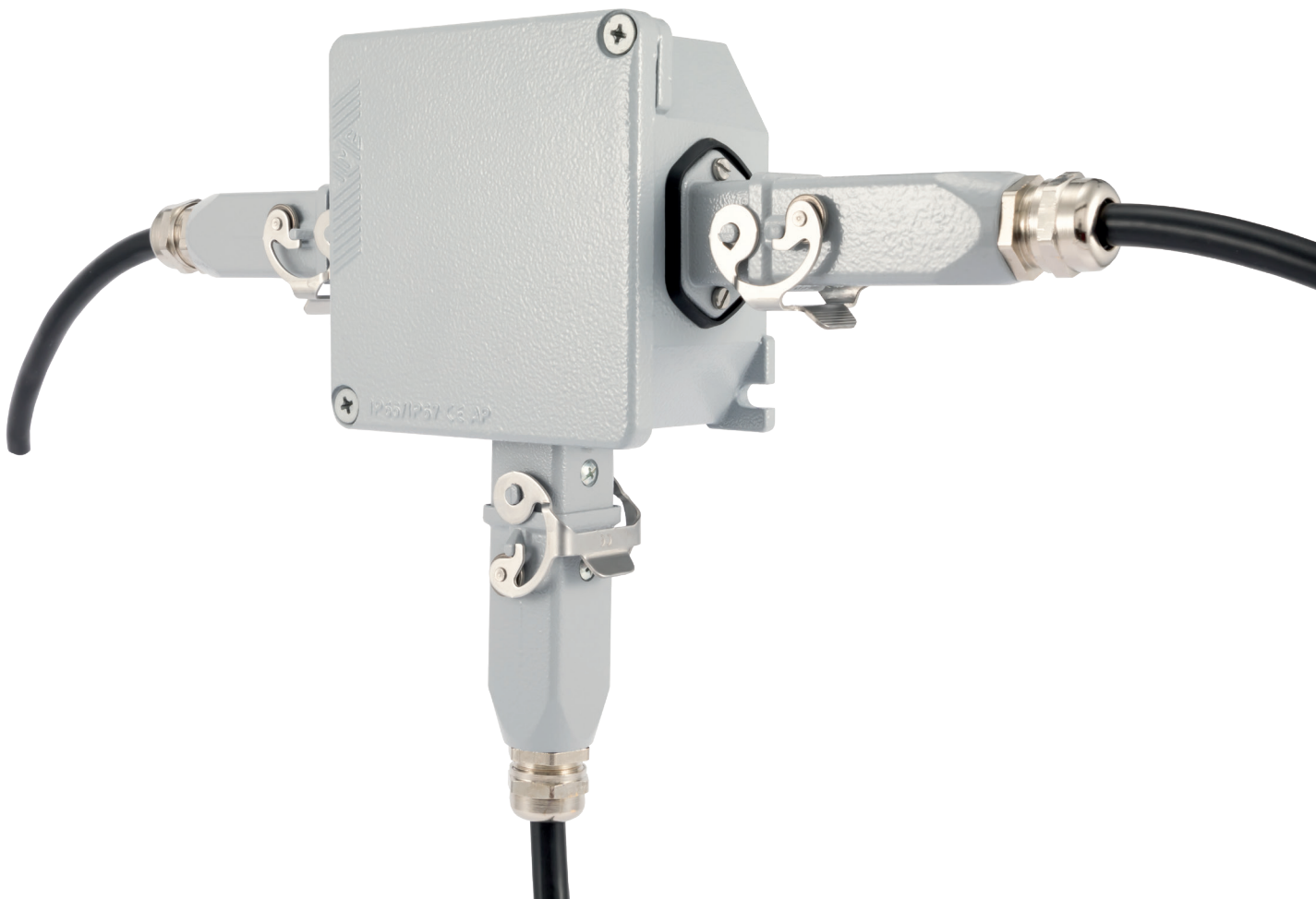

T-BOX

T-JUNCTION BOX FOR “21.21” INSERTS



T-junction box for the assembly of daisy-chain power and control distribution, using the small-sized “21.21” connectors



Find more
information on
our products at
www.ilme.com

TECHNICAL FEATURES

CYG 9KAXI3

This new **T-BOX** part no. **CYG 9KAXI3** special junction box provides a connectorized, compact T-junction for the assembly of typical daisy-chain power and control distribution, using the popular small-sized “21.21” connectors.

This new **T-BOX** special junction box is provided with three pre-assembled bulkhead mounting enclosures **CKAX 03 I**, with stainless steel “Class” locking levers with rolls, mounted over three suitably prepared sides of an **APV 9** IP66/IP67 junction box. Two facing connector enclosures serve the “IN-OUT” passing “bus” line (for power and/or signal) whereas the 90° connector enclosure serves the derivation line to the load.

This new **T-BOX** can house terminal blocks or twist-on wire connectors or cap terminals for easier wiring to the corresponding connectors.

Robust aluminium box and cover with formed-in-place PUR sealing gasket and epoxy-polyester coating.

Pre-assembled connector housings: 3x CKAX 03 I made by zinc alloy, with “Class” stainless steel locking lever.

Pass-through fixing screws and nuts on the flanges of the bulkhead mounting housings CKAX 03 I sealed to preserve the IP66/IP67 of the T-BOX CYG enclosure.

Zinc flake galvanized steel screws (two), M5x16, Ph2 for closing the cover, coupling torque 1 Nm (8,8 lb.in).

O-rings to make the cover screws captive, included.

Suitably sized diagonal DIN 60715 rail with fixing screws and inserts available as separate accessory (part no. **APD 9**).

PE connection terminals provided inside the box and under the metal cover; supplied with 2 brass inserts, 2 screws, 2 lugs and 2 washers for 6 mm² PE (protective earth) terminals.

The cover must always be connected to the PE (protective earth).

Two external wall fixing points (6 mm space for e.g. M5 screws) provided, diagonally placed on the box bottom.

Additional cover fastening wire, to anchor the cover to the box (temperature range: -40 °C ÷ +110 °C) available as separate accessory, part no. **APR F**.

Optional M4x8 threaded brass insert for simplifying the fitting of equipment and PCBs on the bottom of the box, part no. **APR 04** separately available.

Variants W-Type for aggressive environments (**CYGW 9KAXI3**) or S-Type “EMC” (**CYGS 9KAXI3**) available upon request.

IP66/IP67 degree of protection when inserts are equipped with CKR 65(D) kit of screwed gasket and coupled with suitably rated hoods.

robust aluminium
box and cover with
formed-in-place
PUR sealing gasket
and epoxy-polyester
coating

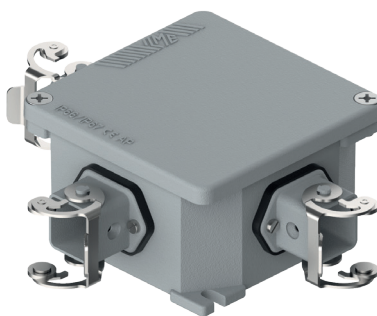


CYG box with T-junction for 21.21 inserts

inserts

Compatible with all power/signal
"21.21" size inserts

T-junction box

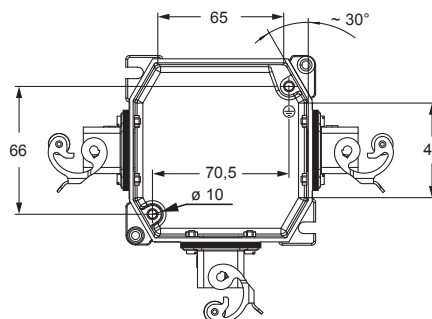


description

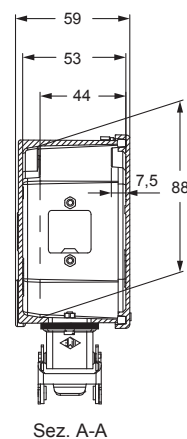
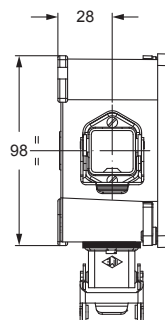
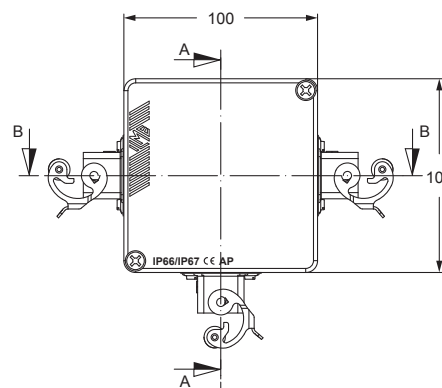
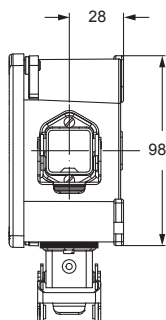
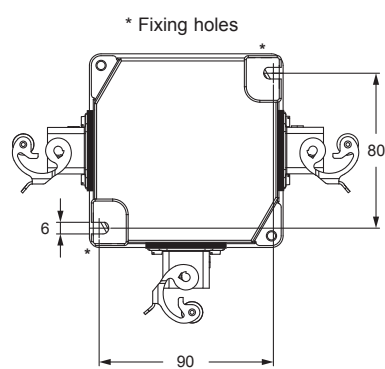
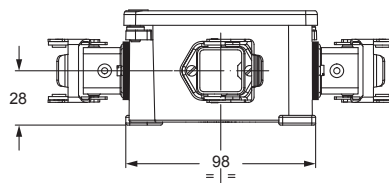
part No.

T-BOX with 3 CKAX 03 I housings pre-assembled

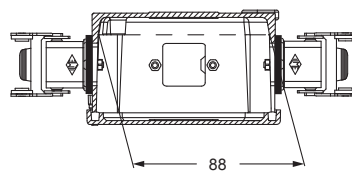
CYG 9KAXI3



Top view without cover



Sez. A-A



Sez. B-B

T-JUNCTION BOX - EXAMPLE OF APPLICATION

