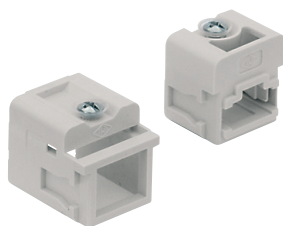


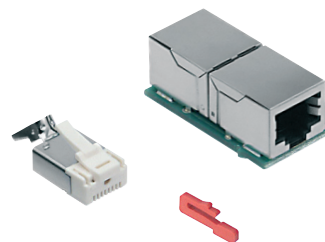
CJ RJ45 connector

enclosures: size "21.21"	page:
insulating type (CK IN, CKG/MKG VN/VAN)	346 - 348
metallic type (CKAX I, CKAG/MKAG V/VA) (MKAX/MKA/MKAXX IF)	353 - 355 362 - 363
IP68 (CGK I, CGK/MGK V)	628 - 631

adapter for RJ45 connectors



RJ45 connectors



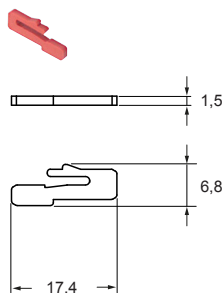
description	part No.	part No. data contacts only	part No. data contacts/+2 power contacts
without RJ45 connector (to be ordered separately) adapter for RJ45 female connector in fixed enclosures	CJ KF		
RJ45 coupler jack with 8 data contacts ¹⁾ RJ45 coupler jack with 8 data contacts/2 power contacts ¹⁾		CX 8 JF	CX 8/2 JF
without RJ45 connector (to be ordered separately) adapter for RJ45 male connector ²⁾	CJ KM		
RJ45 plug with 4 data contacts RJ45 plug with 4 data contacts/2 power contacts RJ45 plug with 6 data contacts/2 power contacts RJ45 plug with 8 data contacts RJ45 plug, 4 data contacts cat. 5e ProfiNET®		CX 4 JM CX 8 JM CX 4E JM	CX 4/2 JM CX 6/2 JM

¹⁾ 4-pole version on request, part No. **CX 4 JF** and **CX 4/2 JF** with "crossover" link

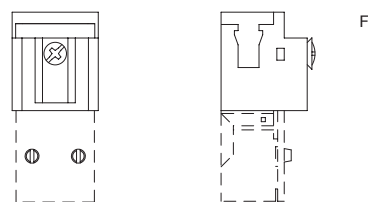
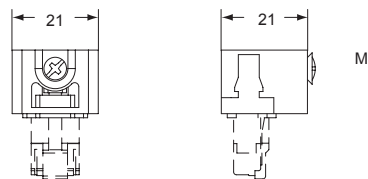
²⁾ to be used with hoods

RJ45 connector features:

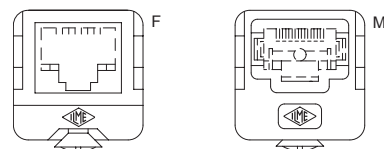
- RJ45 insert, Class 5 Ethernet
- rated current: 2,1A at 70 °C
- rated voltage: 50VDC / 35VAC
- IDC terminals:
- for 0,22 mm² (AWG 24/7) data contacts **CX 4 JM**
- for 0,14 mm² (AWG 26/7) or 0,22 mm² (AWG 24/7) data contacts **CX 4/2 JM**
- for 0,34 mm² (AWG 22/7) or 0,38 mm² (AWG 22/19) power contacts
- for 0,14 mm² (AWG 26/7) data contacts **CX 6/2 JM**
- for 0,25 mm² (AWG 23/19) power contacts
- for 0,14 mm² (AWG 26/7) data contacts **CX 8 JM**
- for 0,34 mm² (AWG 22/7) data contacts **CX 4E JM**
- /7 = 7-strands wire
- /19 = 19-strands wire
- Ø_{max} insulating conductors 1 mm (data), 1,4 mm (power and CX 4E JM)
- Ø_{max} complete cable 7 mm (CX 8 JM: 6,9 mm)
- temperature range: from -40°C to 120 °C
- nickel plated brass screening
- insert coding pin for RJ45 adapters (optional)*: **CR KC**
- * Optional four coding positions CR KC insert coding pin (4 pins required for each connector coupling).
- self-extinguishing properties: to UL 94V-0
- crimp pliers: **CJPZ Y**
- screened cable stripper: **CJST**
- for crimping a male connector, see the crimp tool section page 735
- cUL_{us} (UL for USA and Canada) certified

CR KC
insert coding pin

CJ KF, CJ KM

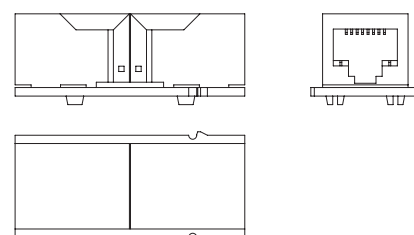


contacts side (front view)

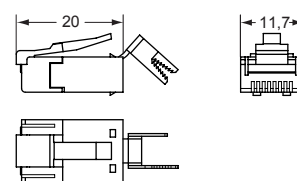


- ☑ inserts already supplied with stainless steel fixing screw with gasket, which ensures IP66/IP67/IP69 degree of protection


CX 4 JF, CX 4/2 JF, CX 8 JF, CX 8/2 JF



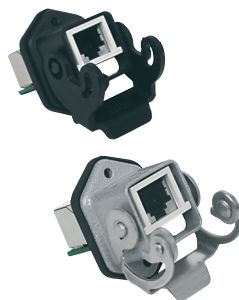
CX 4 JM, CX 4E JM, CX 4/2 JM, CX 6/2 JM, CX 8 JM

How to use CR KC coding pins
(cannot be used with IP68 enclosures)

CJZ RJ45 connector

- IP66/IP67/IP69 degree of protection (EN 60529)
- insert RJ45, CAT. 5 Ethernet
- rated current: 2.1A at 70 °C
- rated voltage: 50V DC / 35V AC
- temperature limit: -40 °C, +120 °C
- nickel-plated brass screening
- insert coding pin: **CR KC**
- self-extinguishing: UL 94V-0
- insulating enclosures in black self-extinguishing thermoplastic material
- hoods with cable gland
- female insert with two connected entries
-  DNV certified
- BV pending

IP66 / IP67 connector in bulkhead housing, female inserts

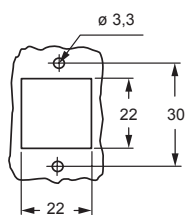
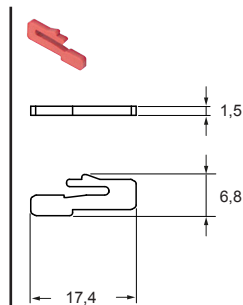
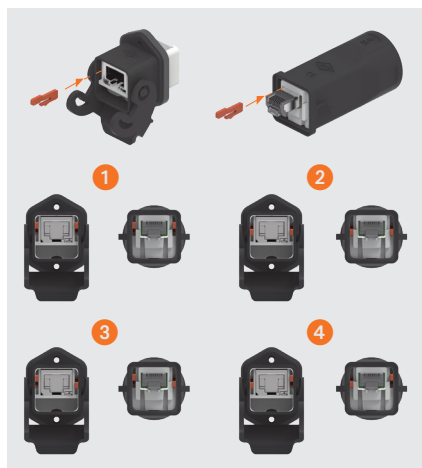


patch cord with 2 RJ45 connectors, male inserts

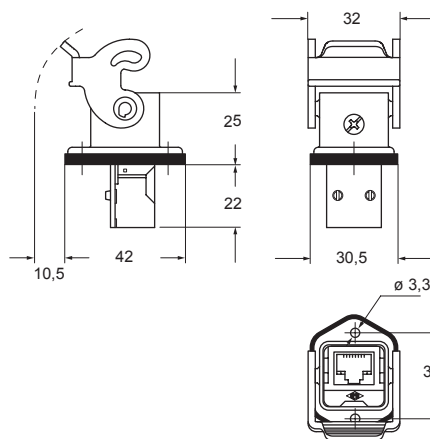


description	part No.	part No.	(L) metre
connector in insulating enclosure and insert with 8 data contacts	CJZ 8 IN		
connector in metal enclosure and insert with 8 data contacts	CJZA 8 I		
RJ45 connector 8 data contacts, in insulating enclosure		CWK 2 J2M8	2
		CWK 5 J2M8	5
		CWK 10 J2M8	10
RJ45 connector 8 data contacts, in metal enclosure		CWKA 2 J2M8	2
		CWKA 5 J2M8	5
		CWKA 10 J2M8	10

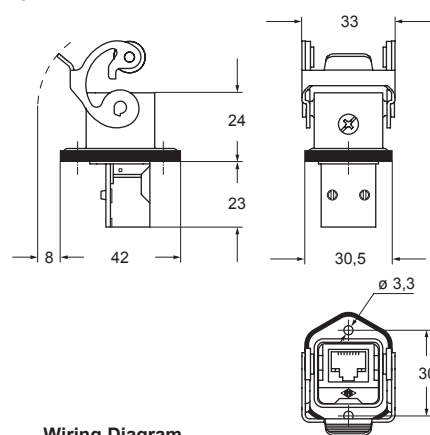
panel cut-out for bulkhead mounting housings

CR KC
insert coding pinHow to use CR KC coding pins
(cannot be used with IP68 enclosures)

CJZ IN



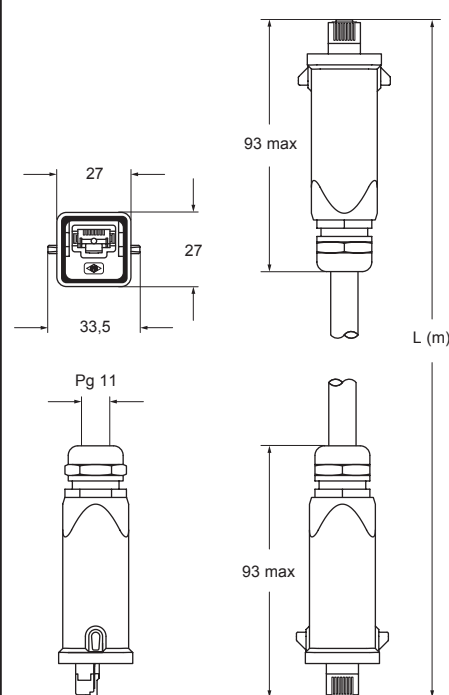
CJZA I



Wiring Diagram

1	1
2	2
3	3
4	4
5	5
6	6
7	7
8	8
VS	VS

CWK J2M8 and CWKA J2M8



Wiring Diagram

1	1
2	2
3	3
4	4
5	5
6	6
7	7
8	8
VS	VS

CYG RJ45 connector

Allows two complete portable RJ45 connectors to be joined, IP65/IP67/IP69 version

insulated version coupling,
for RJ45 connectors



metal version coupling,
for RJ45 connectors



description	part No.	part No.	part No.	part No.
	data contacts only	data contacts/+2 power contacts	data contacts only	data contacts/+2 power contacts

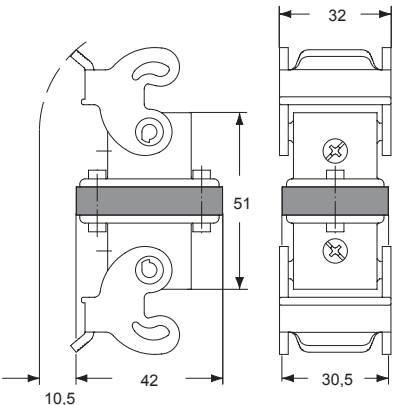
RJ45 coupler jack within housings, 8 data contacts ¹⁾	CYG 8 JF			
RJ45 coupler jack within housings, 8 data contacts/2 power contacts ¹⁾		CYG 8/2 JF		
RJ45 coupler jack within housings, 8 data contacts ²⁾			CYG 8 JFA	
RJ45 coupler jack within housings, 8 data contacts/2 power contacts ²⁾				CYG 8/2 JFA

¹⁾ 4-pole version on request, part No. **CYG 4 JF** and **CYG 4/2 JF** with "crossover" link

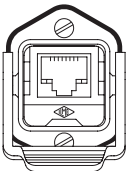
²⁾ 4-pole version on request, part No. **CYG 4 JFA** and **CYG 4/2 JFA** with "crossover" link

- RJ45 connector features:**
- RJ45, Class 5 connector
 - nominal current: 2.1A at 70 °C
 - nominal voltage: 50V DC / 35V AC
 - temperature range: from -40 °C to +120 °C
 - nickel plated brass screening
 - insert coding pin: **CR KC**
 - self-extinguishing properties: UL 94V-0
 - die cast zinc alloy metal enclosures
 - black self-extinguishing thermoplastic insulated enclosures.

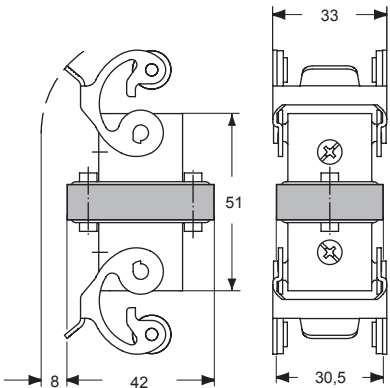
CYG 4 JF, CYG 4/2 JF, CYG 8 JF, CYG 8/2 JF



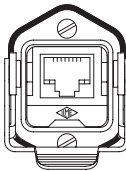
contacts side (front view)



CYG 4 JFA, CYG 4/2 JFA, CYG 8 JFA, CYG 8/2 JFA



contacts side (front view)



CJK adapters 1 seat for RJ45 connector Cat. 6 Class E_A

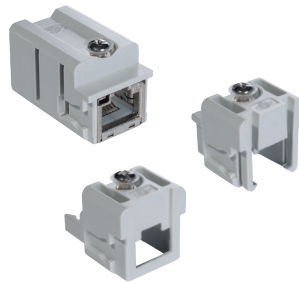
enclosures: size "21.21"	page:
insulating type (CK IN, CKG/MKG VN/VAN *)	346 - 348
metallic type (CKAX I, CKAX/MKAX IAP/AP/VG) (CKAG/MKAG V/VA *) (MKAX/MKA/MKAXX IF)	349 and 353 354 - 355 362 - 363
IP68 (CGK I, CGK/MGK IAP, CGK/MGK V)	628 - 631
*) angled enclosures cannot be used with CX 8 J6IM	

- characteristics according to EN 61984:

1A 50V 0,8kV 3

- cULus (UL for USA and Canada) certified
- insulation resistance: ≥ 10 G Ω
- made of self-extinguishing thermoplastic resin UL 94V-0
- mechanical life: ≥ 500 cycles
- temperature range: from -40 °C to +70 °C
- we recommend to fix the cable with cable tie

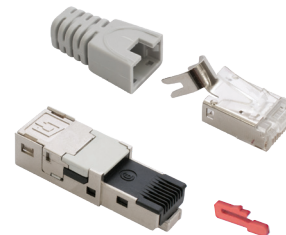
adapters for RJ45 male connector,
female insert with RJ45 female-female coupler



RJ45 male connectors,
crimp and IDC termination



Watch
our CX 8 J6M
online tutorial



Watch
our CX 8 J6IM
online tutorial

description	part No.	part No.
female insert with 1 RJ45 female-female coupler	CJK 8FT	
male inserts for 1 RJ45 male crimp connector, 8 data contacts (without RJ45 connector, to be ordered separately)	CJK 8MT	
male insert for 1 RJ45 male IDC connector, 8 data contacts (without RJ45 connector, to be ordered separately)	CJK 8IMT	
RJ45 male crimp connector, 8 data contacts		CX 8 J6M
RJ45 male IDC connector, 8 data contacts		CX 8 J6IM

CJK 8FT technical data:

- RJ45 female connectors, Cat. 6 Class E_A
- shielding housing: zinc diecast
- housing finish: nickel-plated
- current carrying capacity at 50 °C: 1A
- adequate for Power over Ethernet:
PoE according to IEEE 802.3af
- connectors: IEC 60603-7-5
- adequate for 10 Gigabit Ethernet:
10 Gigabit Ethernet acc. to IEEE 802.3an
- custom-designed cabling systems: PROFINET
Installation Guideline
- generic cabling systems:
ANSI/TIA/EIA-568-C.2
ISO/IEC 11801
EN50173-1
ISO/IEC 24702
EN 61918
- class E_A (channel): ISO/IEC 11801, EN 50173-1

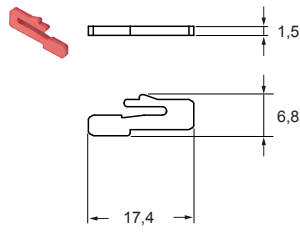
CX 8 J6M technical data:

- RJ45 male crimp connectors Cat. 6_A
- crimp pliers: **CJPZ T**
- screened cable stripper: **CJST**
- Cu-conductor diameter:
solid: 0,40 - 0,51 mm (AWG 26/1 - 24/1)
stranded: 0,46 - 0,61 mm (AWG 27/7 - 24/7)
- insulation diameter: 0,85 - 1,05 mm
- cable diameter: 5,0 - 7,0 mm
- connectors: IEC 60603-7-51
- 10 Gigabit Ethernet acc. to IEEE 802.3an:
adequate for 10 Gigabit Ethernet
- category 6_A: ISO/IEC 11801; EN 50173-1
- class E_A: ISO/IEC 11801; EN 50173-1
- category 6_A: ANSI/TIA/EIA-568-C.2

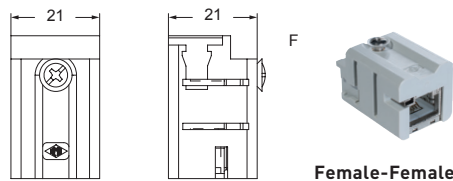
CX 8 J6IM technical data:

- RJ45 male IDC connectors Cat. 6 Class E_A
- Cu-conductor diameter:
solid: 0,41 - 0,64 mm (AWG 26/1 - 22/1)
stranded: 0,48 - 0,76 mm (AWG 26/7 - 22/7)
- insulation diameter: 0,85 - 1,6 mm
- cable diameter: 5,5 - 8,5 mm
- connectors: IEC 60603-7-5
- category 6_A: ISO/IEC 11801; DIN EN 50173-1
- wrenches pliers for CX 8 J6IM: **CJPW K**
- 10 Gigabit Ethernet acc. to IEEE 802.3an:
adequate for 10 Gigabit Ethernet
- class E_A: ISO/IEC 11801; EN 50173-1
- category 6: ANSI/TIA/EIA-568-C.2
- custom-designed cabling systems:
according to PROFINET Installation Guideline

CR KC
insert coding pin

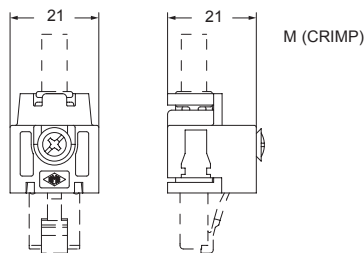


CJK 8FT



Female-Female

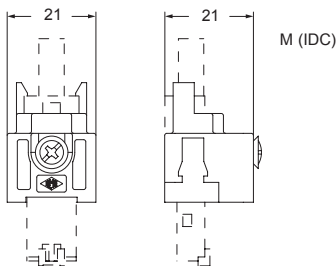
CJK 8MT¹⁾



M (CRIMP)

¹⁾ to be used with hoods

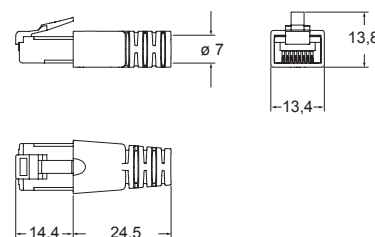
CJK 8IMT¹⁾



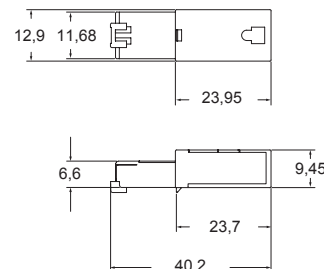
M (IDC)

¹⁾ to be used with hoods

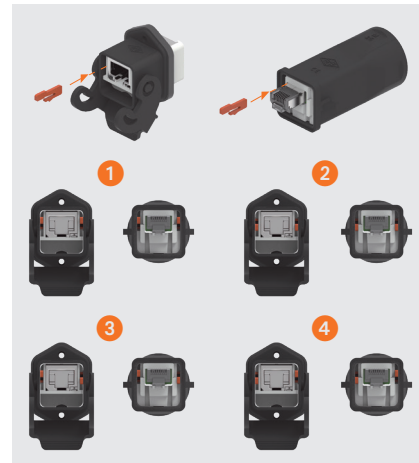
CX 8 J6M (can be used with CJK 8MT)



CX 8 J6IM (can be used with CJK 8IMT)



How to use CR KC coding pins
(cannot be used with IP68 enclosures)



CW RJ45 patch cord

with 2 RJ45 male connectors



description	part No.	(L) metre
RJ45 male connector with 8 data contacts	CW 1 J2M87	1
	CW 2 J2M87	2
	CW 3 J2M87	3
	CW 5 J2M87	5
	CW 7.5J2M87	7,5
	CW 10 J2M87	10
	CW 15 J2M87	15

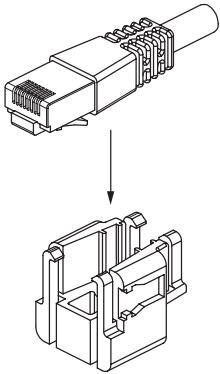
RJ45 patch cord technical data:

- S/FTP Cat. 7 PUR
- temperature range: from -40 °C ÷ +75 °C
- nickel plated brass screening
- green RAL 6018 colour

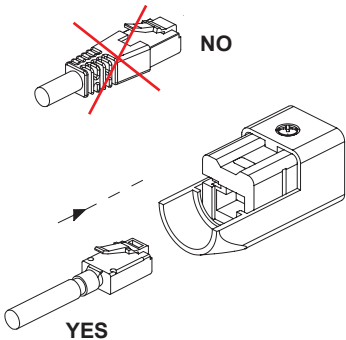
Can be used with:

- MIXO RJ45 CX 01 J8M male inserts (see page 302)
- RJ45 universal patch cord adapter CJK 8M (see page 233)
- CJK 8MT adapters

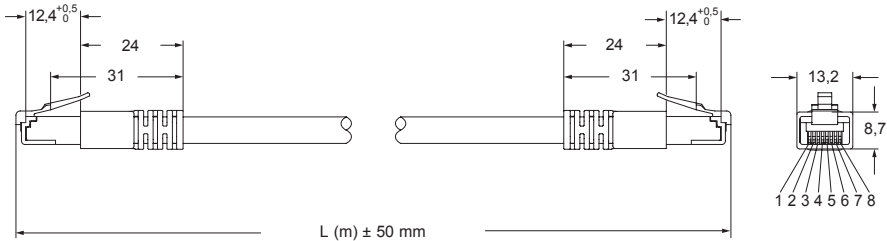
CJK 8MT male assembly



CJK 8FT to be used in VG or IAP enclosures with male crimp version



CW...J2M87



Wiring Diagram

1	1
2	2
3	3
4	4
5	5
6	6
7	7
8	8
S	S

CJK adapters 1 seat for RJ45 IDC connector Cat. 6 Class E_A

enclosures:
size "21.21" page:
insulating type 346 - 348
(CK IN, CKG/MKG VN/VAN *)

metallic type 349 and 353
(CKAX I, CKAX/MKAX IAP/AP/VG)
(CKAG/MKAG V/VA *) 354 - 355
(MKAX/MKA/MKAXX IF) 362 - 363

IP68 628 - 631
(CGK I, CGK/MGK IAP, CGK/MGK V)

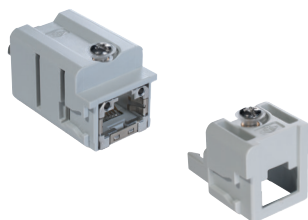
*) angled enclosures cannot be used with CX 8 J6IM

- characteristics according to EN 61984:

1A 50V 0,8kV 3

- DNV certified
- BV pending
- insulation resistance: $\geq 10 \text{ G}\Omega$
- made of self-extinguishing thermoplastic resin UL 94V-0
- mechanical life: ≥ 500 cycles
- temperature range: from -40°C to $+70^\circ\text{C}$
- we recommend to fix the cable with cable tie

adapters for RJ45 male connectors,
RJ45 female - cable IDC connectors



RJ45 male connectors,
IDC termination



Watch
our
online
tutorial

description

part No.

part No.

female insert with 1 RJ45 female IDC connector
contact coding according to **T568A**
female insert with 1 RJ45 female IDC connector
contact coding according to **T568B**
female insert with 1 RJ45 female IDC connector
contact coding according to **PROFINET**
male insert for 1 RJ45 male IDC connector, 8 data contacts
(without RJ45 connector, to be ordered separately)

CJK 8IFT

CJK 8B IFT

CJK 8P IFT

CJK 8IMT

RJ45 male IDC connector, 8 data contacts

CX 8 J6IM

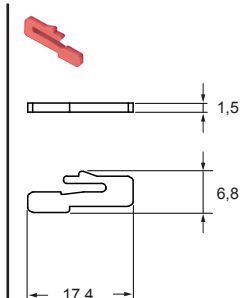
CJK 8IFT, CJK 8B IFT, CJK 8P IFT technical data:

- RJ45 female IDC connectors, Cat. 6_A
- Cu-conductor diameter
solid: 0,40 - 0,64 mm (AWG 26/1 - 22/1)
stranded: 0,48 - 0,76 mm (AWG 26/7 - 22/7)
- insulation diameter: 0,85 - 1,6 mm
- shielding housing: zinc diecast
- housing finish: nickel-plated
- current carrying capacity at 50 °C: 1A
- adequate for Power over Ethernet:
PoE according to IEEE 802.3af
- connectors: IEC 60603-7-5
- adequate for 10 Gigabit Ethernet:
10 Gigabit Ethernet acc. to IEEE 802.3an
- custom-designed cabling systems: PROFINET
Installation Guideline
- generic cabling systems:
ANSI/TIA/EIA-568-C.2
ISO/IEC 11801
EN50173-1
ISO/IEC 24702
EN 61918
- class E_A (channel): ISO/IEC 11801, EN 50173-1

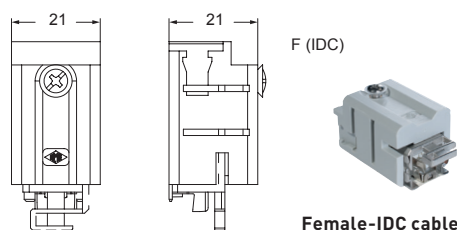
CX 8 J6IM technical data:

- RJ45 male IDC connectors Cat. 6 Class E_A
- Cu-conductor diameter
solid: 0,41 - 0,64 mm (AWG 26/1 - 22/1)
stranded: 0,48 - 0,76 mm (AWG 26/7 - 22/7)
- insulation diameter: 0,85 - 1,6 mm
- cable diameter: 5,5 - 8,5 mm
- connectors: IEC 60603-7-5
- category 6_A: ISO/IEC 11801; DIN EN 50173-1
- wrenches pliers for CX 8 J6IM: **CJPW K**
- 10 Gigabit Ethernet acc. to IEEE 802.3an:
adequate for 10 Gigabit Ethernet
- class E_A: ISO/IEC 11801; EN 50173-1
- category 6: ANSI/TIA/EIA-568-C.2
- custom-designed cabling systems:
according to PROFINET Installation Guideline

CR KC
insert coding pin

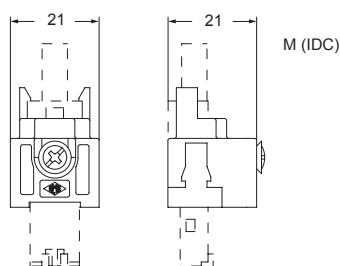


CJK 8IFT, CJK 8B IFT, CJK 8P IFT



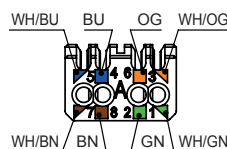
Female-IDC cable

CJK 8IMT (to be used with hoods)

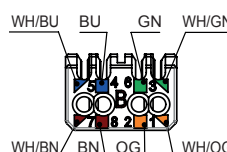


PIN assignment

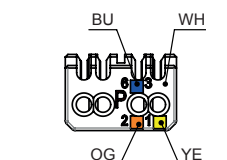
CJK 8IFT
T568A according
to TIA/EIA 568-C.2



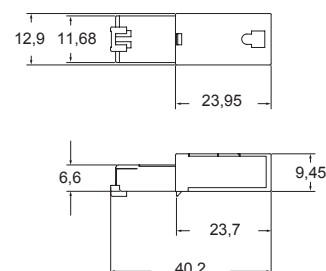
CJK 8B IFT
T568B according
to TIA/EIA 568-C.2



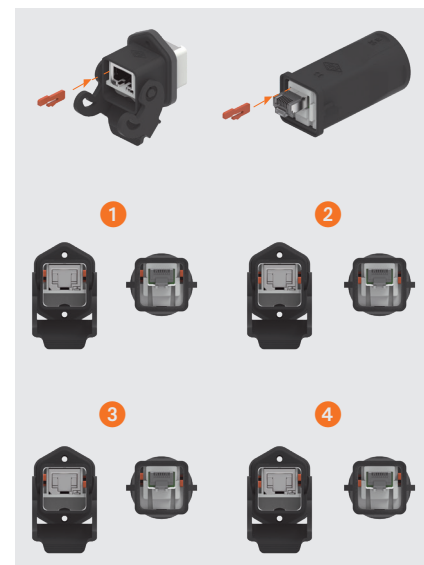
CJK 8P IFT
Profinet / Industrial



CX 8 J6IM (can be used with CJK 8IMT)

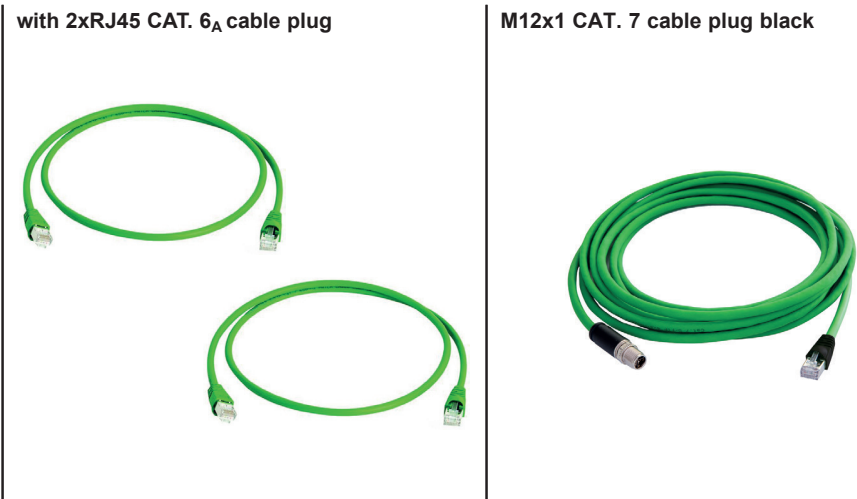


How to use CR KC coding pins
(cannot be used with IP68 enclosures)





CW - CWC connecting cables for MIXO RJ45 CAT. 6_A

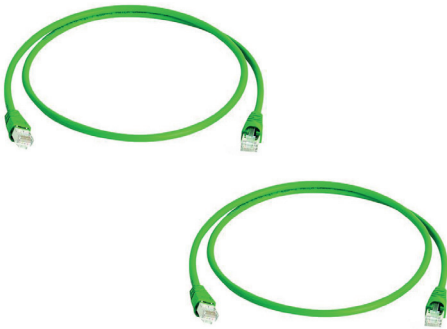


description	part No.	(L) metre	part No.	(L) metre	part No.	(L) metre
S/FTP CAT. 6A cable 4x2xAWG 27/7 (PUR) * - SHIELDED * chemical resistant cable jacket Colour outer jacket green	CW J6 1M	1				
	CW J6 2M	2				
	CW J6 3M	3				
	CW J6 5M	5				
	CW J6 7.5M	7,5				
	CW J6 10M	10				
	CW J6 15M	15				
S/FTP CAT. 6A cable 4x2xAWG 27/7 (PVC) - SHIELDED Colour outer jacket green			CWC J6 1M	1		
			CWC J6 2M	2		
			CWC J6 3M	3		
			CWC J6 5M	5		
			CWC J6 7.5M	7,5		
			CWC J6 10M	10		
			CWC J6 15M	15		
Over moulded IP67 to RJ45 plug crimp IP20					CW XJ0.5M	0,5
S/FTP CAT. 7 cable					CW XJ1M	1
4x2xAWG 26/7 (PUR) *					CW XJ2M	2
* chemical resistant cable jacket					CW XJ3M	3
Colour outer jacket green					CW XJ5M	5
					CW XJ7.5M	7,5
					CW XJ10M	10

CW - CWC connecting cables for MIXO RJ45 CAT. 5

DATA CONNECTORS

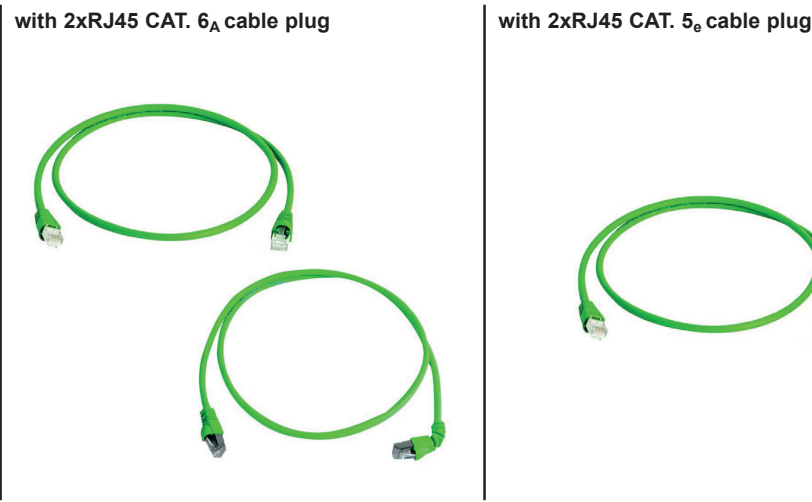
with 2xRJ45 CAT. 5 cable plug



description	part No.	(L) metre	part No.	(L) metre
SF/UTP CAT. 5 4x2xAWG 26/7 (PUR) ¹⁾ - SHIELDED ¹⁾ chemical resistant cable jacket Colour outer jacket green	CW J5 1M	1		
	CW J5 2M	2		
	CW J5 3M	3		
	CW J5 5M	5		
	CW J5 7.5M	7,5		
	CW J5 10M	10		
	CW J5 15M	15		
SF/UTP CAT. 5 4x2xAWG 26/7 (PVC) - SHIELDED Colour outer jacket green			CWC J5 1M	1
			CWC J5 2M	2
			CWC J5 3M	3
			CWC J5 5M	5
			CWC J5 7.5M	7,5
			CWC J5 10M	10
			CWC J5 15M	15



CWH connecting cables for MIXO RJ45 CAT. 6_A - CAT. 5_e

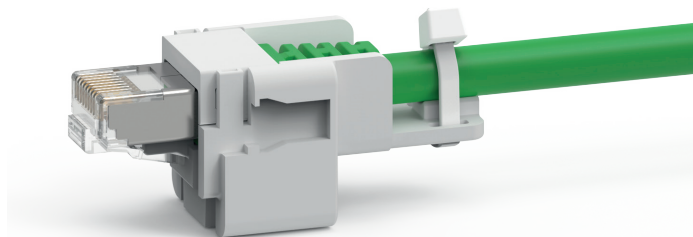


description	part No.	(L) metre	part No.	(L) metre	part No.	(L) metre
CAT. 6_A wiring 1:1 cable S/FTP (LSHZ) - SHIELDED Colour outer jacket green	CWH J6 0.25M	0,25				
	CWH J6 0.5M	0,5				
	CWH J6 1M	1				
	CWH J6 2M	2				
	CWH J6 3M	3				
	CWH J6 5M	5				
	CWH J6 7.5M	7,5				
	CWH J6 10M	10				
	CWH J6 15M	15				
1x90° - 1x180° cable boot			CWH J6 0,5MA	0,5		
CAT. 6_A wiring 1:1 cable			CWH J6 1MA	1		
S/FTP (LSHZ) - SHIELDED			CWH J6 2MA	2		
Colour outer jacket green			CWH J6 3MA	3		
			CWH J6 5MA	5		
			CWH J6 7.5MA	7,5		
			CWH J6 10MA	10		
CAT. 5_e wiring 1:1 cable					CWH JE 0.5M	0,5
S/FTP (LSHZ) - SHIELDED					CWH JE 1M	1
Colour outer jacket green					CWH JE 2M	2
					CWH JE 3M	3
					CWH JE 5M	5
					CWH JE 7.5M	7,5
					CWH JE 10M	10
					CWH JE 15M	15

CJK 8M

TECHNICAL FEATURES

- **CJK 8M** adapter insert size "21.21" for placing an RJ45 plug (male connector) of a pre-assembled patch cord into a **M25** size "21.21" top cable entry hood, either metal or insulating;
- it allows a **truly "universal"** use thanks to the possibility to install virtually any RJ45 patch cord plugs available on the market (of any Category: Cat. 5, 5e, 6, 6A, 7, or 8) inside the growing range of size "21.21" top entry hoods with glued gasket, **without any disassembly of the patch cord**. A straightforward smart solution, all the more so if compared with more complex and expensive solutions;
- the **proprietary ILME design** of this adapter foresees a **two-part insulating carrier** (the first part acting as **carrier**, the second as **latch**) that can quickly and easily make captive the RJ45 plug (male connector), the assembly is then introduced in the relevant "21.21" M25 top entry hood and fastened to it by the usual screw;
- a **metallic** (nickel plated brass) or **insulating** (light grey or black colour) **M25 cable gland** with suitable internal diameter to let the patch cord RJ45 plug pass-through **is separately available**;
- the **CR CJK G special sealing gasket**, provided with the **CJK 8M** RJ45 universal patch cord adapter, **is longitudinally cut** on its flank and must be applied over the cable to increase its diameter in the portion to introduce in the cable gland sealing, according to instructions;

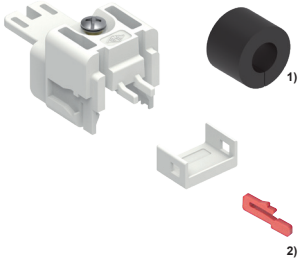


- suitable for the combination of an RJ45 patch cord with one or both RJ45 plug extremities mounted inside suitable size "21.21" *insulating or metal* M25 top entry hood with glued gasket, with an RJ45 jack counterpart (female connector), e.g. a **CJ KF** adapter combined with the relevant female/female RJ45 connector **CX 8 JF** or **CX 8/2 JF** (4-way version **CX 4 JF** or 4/2-way version **CX 4/2 JF** are available upon request), mounted inside a corresponding counterpart hood or housing with locking lever size "21.21";
- optional four coding positions with **CR KC** insert coding pin (4 pins required for each connector coupling).



enclosures: size "21.21"	page:
MKG V25	348
MKG VN25	348
MKAG V25	353

RJ45
universal patch cord adapter



M25
cable gland

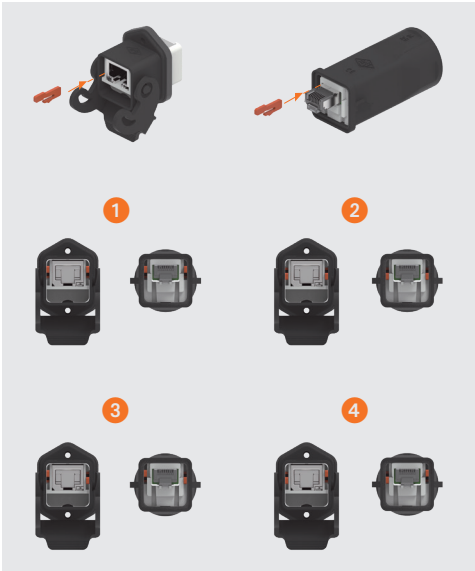


description	part No.	part No.	entry M
universal patch cord adapter	CJK 8M		
insert coding pin for RJ45 adapters (optional) ²⁾	CR KC		
plastic cable gland, light grey (RAL 7035) ³⁾		AW M25IJ	25
plastic cable gland, black (RAL 9005) ³⁾		AW M25INJ	25
nickel plated brass cable gland		AW M25PJ	25

- cULus (ECBT2.E115072, ECBT8.E115072) DNV certified
- BV pending

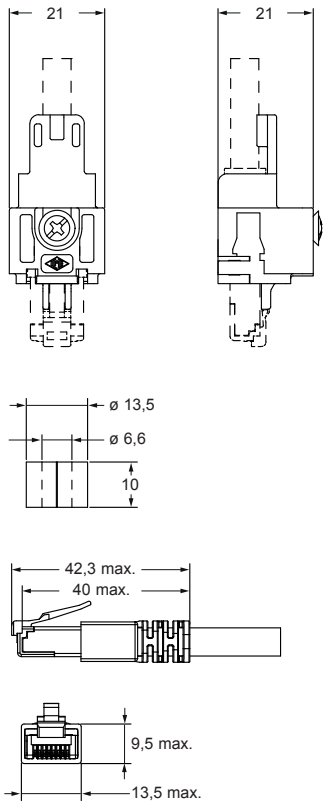
- ¹⁾ CR CJK G gasket, supplied with CJK 8M universal patch cord adapter, see page 234, note (*****)
- ²⁾ Optional four coding positions CR KC insert coding pin (4 pins required for each connector coupling)

How to use CR KC coding pins
(cannot be used with IP68 enclosures)

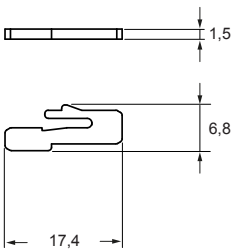


³⁾ IP65 degree of protection; for higher degree we recommend the use of ASR B25 gasket

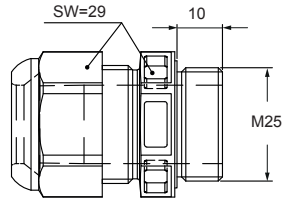
CJK 8M



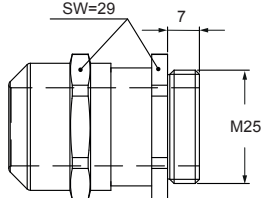
CR KC



AW M25IJ and AW M25INJ



AW M25PJ



Watch
our
online
tutorial

Female inserts

Housings

RJ45 CONNECTOR Cat 6^ARJ45 female/female coupler
(8 data contacts)

CJK 8FT

RJ45 female/IDC jack
(8 data contacts)CJK 8IFT
CJK 8B IFT
CJK 8P IFTRJ45 CONNECTOR Cat 5-5^eRJ45
female/female coupler
(8 data contacts)

CX 8 JF** + CJ KF

RJ45
female/female coupler
(8 data + 2 power contacts)

CX 8/2 JF** + CJ KF

Legend

* angled enclosures cannot be used with CX 8 J6IM, CJK 8FT/IFT, CLK and CJ KF inserts/adapters

** version with 4 data crossover wirings on request (CX4 JF, CX4/2 JF)

*** cannot be used with CJ KF adapter

**** suitable cable glands AW M25 PJ/IJ/INJ

***** suitable cable glands AW M25 PJ/IJ/INJ + CR CJK G gasket (already supplied with the CJK 8M universal patch cord adapter, see page 233, note 1); cannot be used with CJ KF adapter



MK VGN25*****

MK VG25*****

CK 03 IN
CK 03 I

21.21 CK/MK PLASTIC



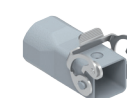
CKAX 03 I



CKAX 03 ILS

CKAX IAPS*** /APS*** /VGS***
MKAX IAP20*** /AP20*** /VG20***CKAX 03 IA4*
MKAX AP25 /IAP25*****

MKAX IF



MKAX VG25

CKAX 03 CXA
(cover for hoods)

21.21 CKA/MKA METAL



CGK I

CGK IAP13***
MGK IAP20***

21.21 CGK/MGK IP68

Hoods

Male inserts

21.21 CK/MK PLASTIC



21.21 CKA/MKA METAL



21.21 ENLARGED METAL/PLASTIC



21.21 CGK/MGK IP68



RJ45 male crimp plug



CX 8 J6M + CJK 8MT

RJ45 male IDC plug



CX 8 J6IM + CJK 8IMT

RJ45 CONNECTOR Cat 6_ARJ45 male crimp plug
(4 data contacts)

CX 4 JM + CJ KM

RJ45 male crimp plug
(8 data contacts)

CX 8 JM + CJ KM

RJ45 male crimp plug
(4 data + 2 power contacts)

CX 4/2 JM + CJ KM

RJ45 male crimp plug
(6 data + 2 power contacts)

CX 6/2 JM + CJ KM

RJ45 male crimp plug
(4 data cont. cat.5_e) PROFINET

CX 4E JM + CJ KM

RJ45 CONNECTOR Cat 5-5_e

RJ45 universal patch cord



CJK 8M

RJ45 COUPLER IN ANGLED BULKHEAD MOUNTING HOUSINGS CJZA 8 IA4, CJZAX 8 IA4, CJZAXX 8 IA4



90° angled RJ45
female-female coupler
in bulkhead-mount angled “21.21”
metal housing with 4 fixing screws



Find more
information on
our products at
www.ilme.com

TECHNICAL FEATURES

CJZA 8 IA4, CJZAX 8 IA4, CJZAXX 8 IA4

This new **90° angled** female-female RJ45 coupler, housed in a sturdy bulkhead-mounting **angled “21.21” metal housing** with **4 fixing screw on the flange**, once installed on the vertical wall of a control panel enclosure, enables the corresponding male RJ45 connector being oriented **vertically**, along the wall of the control panel, so as to **avoid undue torque (leverage effect)** on the connector locking lever, due to the weight of the attached cable and the lever arm that a horizontally placed hood and gland would imply.

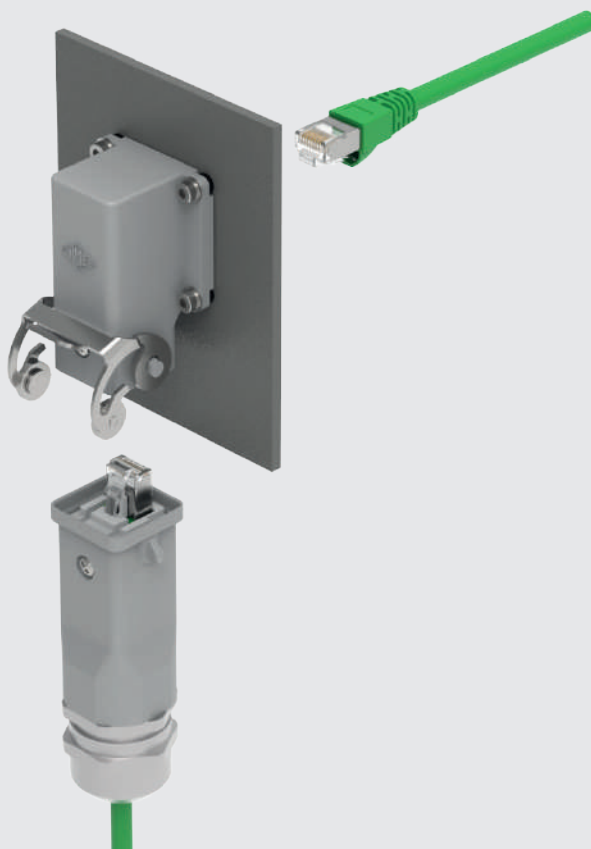
This RJ45 female/female adapter is fitted with two PCB-mounted **RJ45 Cat. 5** female connectors (jacks) on a specially designed PCB, and allows use of patch cords both on the inside and the outside of a control panel, e.g. using the universal patch cord adapter CJK 8M in corresponding hood on the outside of the panel.

IP66/IP67/IP69 degree of protection when mated and locked.

NOTE - The sealing on the 4 pass-through fixing screw must be verified by the customer.

RoHS: compliant without exemptions.

avoids
undue leverage
on the connector
locking lever



CJZAX - CJZA RJ45 coupler

angled bulkhead mounting housings
with RJ45 coupler
 **STAINLESS STEEL LEVER**
 **FROM SEPTEMBER 2021**
angled bulkhead mounting housings
with RJ45 coupler
 **GALVANIZED STEEL RIGID LEVER**
 **FROM SEPTEMBER 2021**

description

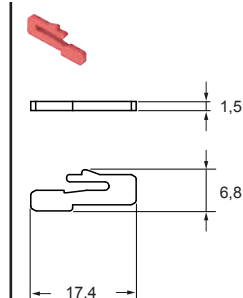
part No.

part No.

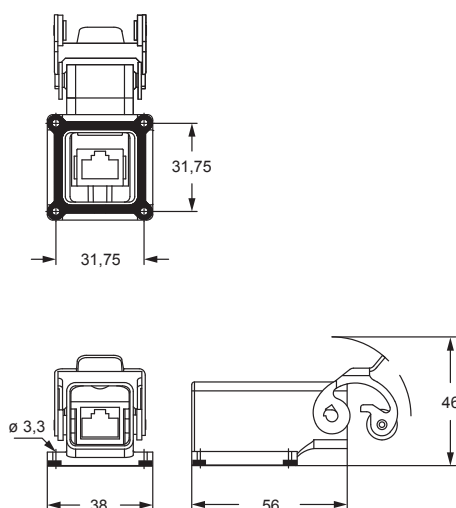
angled bulkhead mounting housings with RJ45 coupler
with stainless steel lever**CJZAX 8 IA4**angled bulkhead mounting housings with RJ45 coupler
with galvanized steel rigid lever**CJZA 8 IA4**

- IP66/IP67/IP69 degree of protection (EN 60529)
- RJ45 coupler, CAT. 5 Ethernet
- rated current: 2.1A at 70 °C
- rated voltage: 50V DC / 35V AC
- temperature limit: -40 °C, +120 °C
- nickel-plated brass shielding
- insert coding pin: **CR KC ***
- self-extinguishing: UL 94V-0
- enclosures in zinc alloy

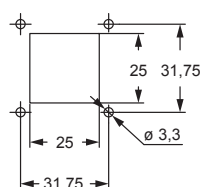
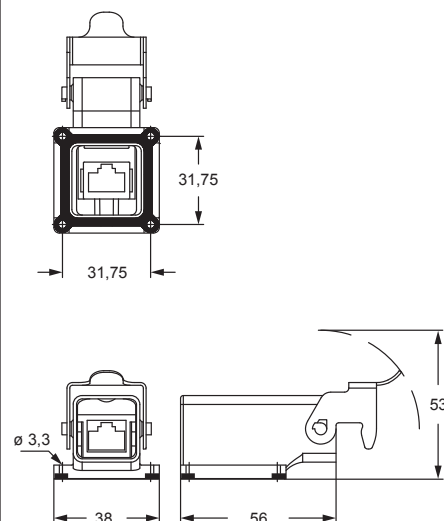
* **CR KC**
insert coding pin



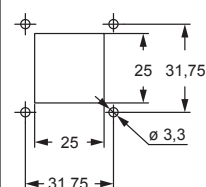
How to use CR KC coding pins
(see page 224 of CN.19 Catalogue)

CJZAX 8 IA4

panel cut-out for CJZAX 8 IA4

**CJZA 8 IA4**

panel cut-out for CJZA 8 IA4



CJZAXX RJ45 coupler

angled bulkhead mounting housings
with RJ45 coupler



 **STAINLESS STEEL RIGID LEVER**

 **FROM SEPTEMBER 2021**

description

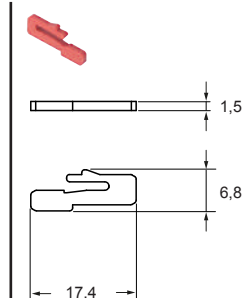
part No.

angled bulkhead mounting housings with RJ45 coupler
with stainless steel rigid lever

CJZAXX 8 IA4

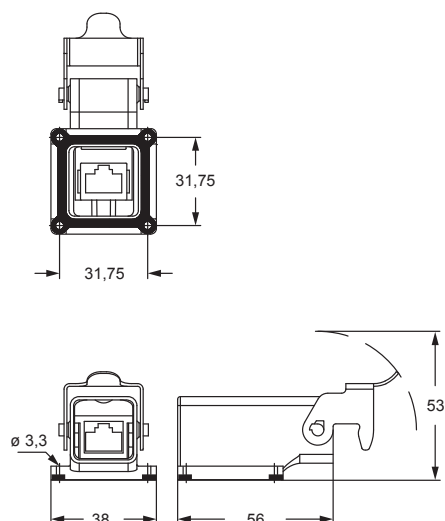
- IP66/IP67/IP69 degree of protection (EN 60529)
- RJ45 coupler, CAT. 5 Ethernet
- rated current: 2.1A at 70 °C
- rated voltage: 50V DC / 35V AC
- temperature limit: -40 °C, +120 °C
- nickel-plated brass shielding
- insert coding pin: **CR KC ***
- self-extinguishing: UL 94V-0
- enclosures in zinc alloy

* **CR KC**
insert coding pin



How to use CR KC coding pins
(see page 224 of CN.19 Catalogue)

CJZAXX 8 IA4



panel cut-out for CJZAXX 8 IA4

