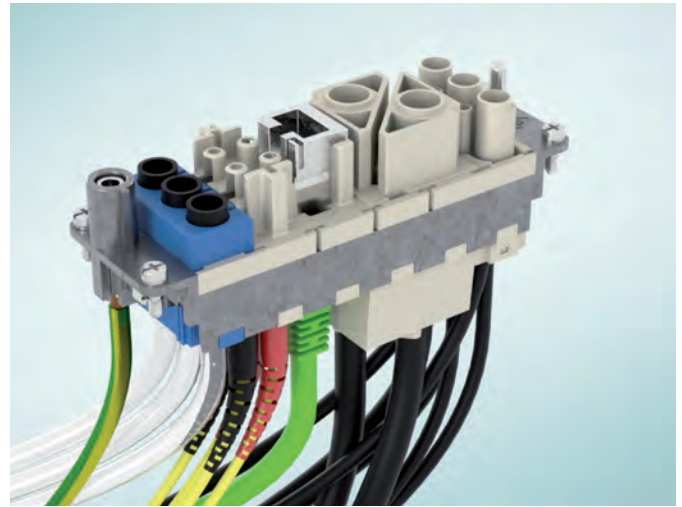


MIXO FRAMES

Made of die-cast zinc alloy
with protective earth (PE) contacts

SUM UP

- ❑ Die-cast zinc alloy frames
- ❑ Protective earth (PE)
- ❑ Possibility of mounting female and male modular units on the same frame
- ❑ Polarisation on frames
- ❑ When two or more identical connectors of the MIXO series are used, use of coding pins (CR...CX series) may prevent incorrect coupling



TECHNICAL FEATURES

MIXO FRAMES

HOW TO SELECT FRAMES

- 1 **Calculate** the number of frame slots taken up by the required inserts (frame slot 1, 2 or 3 modules).



	No. of frame slots
CX 01 9VF/M	1
CX 01 9VTF	1
CX 01 GF/M	1
CX 01 J8	1
CX 01 UF/M	1
CX 02 4AF/M	1
CX 02 4BF/M	1
CX 02 4F/M	1
CX 02 7F/M	1
CX 02 CHF/M	1
CX 02 P	1
CX 03 4F/M	1
CX 03 4BF/M	1
CX 03 P	1
CX 3/4 XDF/M	1
CX 04 LF/M	1
CX 04 RF/M	1
CX 04 SCF/M	1
CX 04 XF/M	1
CX 05 SF/M	1
CX 05 SHF/M	1
CX 06 CF/M	1
CX 06P CF/M	1
CX 08 CF/M	1
CX 08 I6F/M	1
CX 12 DF/M	1
CX 17 DF/M	1
CX 25 IBF/M	1
CX 25 IF/M	1
CX FM	1



	No. of frame slots
CX 01 JF/M	2
CX 01 YF/M	2
CX 01 YPEF/M	2
CX 02 BF/M	2
CX 02 GF/M	2
CX 02 HF/M	2
CX 20 CF/M	2
CX 42 DF/M	2



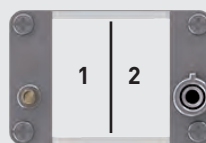
	No. of frame slots
CX 02 JF/M	3

- 2 **Select** the right frame according to the number of required modules (available 1, 2, 3, 4 and 6 modules).

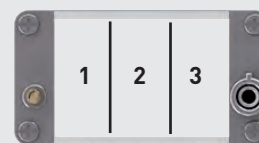
CX 01 T
1 module



CX 02 TF/TM
2 modules



CX 03 TF/TM
3 modules



CX 04 TF/TM
4 modules



CX 06 TF/TM
6 modules



- Fill the unused frame slots with CX FM dummy module



Possibility to use the MIXO **HNM frames** (provided with special gold plated PE contacts) together with R series of crimp contacts and the relevant connector hoods and housings, to produce where

required an **HNM** connector (High Number of Matings, up to 10.000 cycles of operation).

CX 01 T

enclosures: size "49.16"	page:
IL-BRID	374 - 377, 382
CZ7 IP67, single lever	384
W-TYPE for aggressive environments	519
E-Xtreme® corrosion proof	540
EMC	576
panel supports: COB + adapter	page: 652 - 654

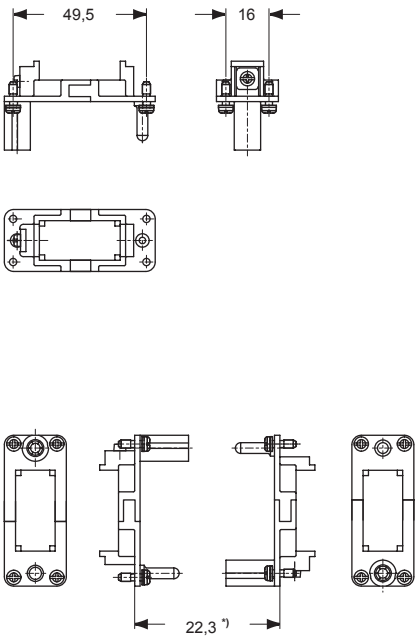
frames for modular units



description	part No.
-------------	----------

for CZ enclosures	CX 01 T
-------------------	---------

- die-cast zinc alloy frames
- protective earth (PE)
- coding pins **CR..CX**



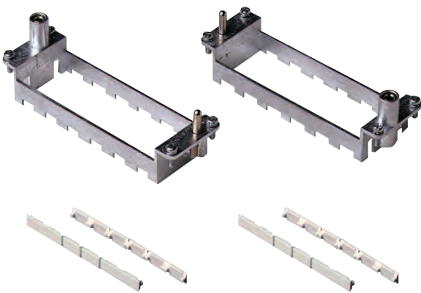
*) distance for electric contacts: max 24 mm
distance for pneumatic contacts: max 23,5 mm

- small earth terminal for cables from 1-2,5 mm²,
AWG 18-14

CX 02 TM/TF, CX 03 TM/TF, CX 04 TM/TF, CX 06 TM/TF

enclosures:	page:
C-TYPE IP65 or IP66/IP69	387 - 430
C7 IP67	436 - 442
V-TYPE IP65 or IP66/IP69	444 - 463
BIG hoods	466 - 473
T-TYPE IP65 insulating	480 - 487
T-TYPE / W IP66/IP69 insulating	489 - 492
HYGIENIC T-TYPE / H IP66/IP69	501 - 504
HYGIENIC T-TYPE / C IP66/IP69, -50 °C	506 - 509
W-TYPE for aggressive environments	521 - 526
E-Xtreme® corrosion proof	530 - 537
	542 - 547
	550 - 557
EMC	578 - 581
Central lever	603 - 614
LS-TYPE	618 - 625
IP68	632 - 647
panel supports:	page:
COB	652 - 653

frames for modular units
with lock-in tab (included)

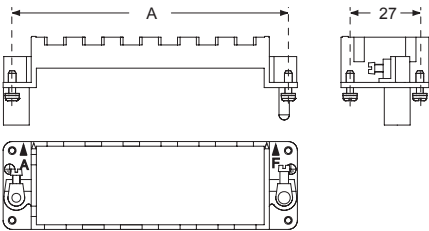


description	part No.	part No.
frames for modular units, with lock-in tab included	type for hoods*	type for housings*
for 2 modular units - for housing size 44.27	CX 02 TM	CX 02 TF
for 3 modular units - for housing size 57.27	CX 03 TM	CX 03 TF
for 4 modular units - for housing size 77.27 and 77.62	CX 04 TM	CX 04 TF
for 6 modular units - for housing size 104.27 and 104.62	CX 06 TM	CX 06 TF

- die-cast zinc alloy frames
- protective earth (PE)
- possibility of mounting female and male modular units on the same frame
- frames supplied with lock-in tab to attach units
- polarisation on frames
- coding pins **CR..CX**
- for spare lock-in tab **CX CFM** see SPARE SPARTS catalogue

* Assignment of attribute "for hoods" or "for housings" is merely conventional: both types can be mounted either in a hood or in a housing. In a modular connector coupling there shall be always a frame type "M" and a frame type "F".

CX TM / TF



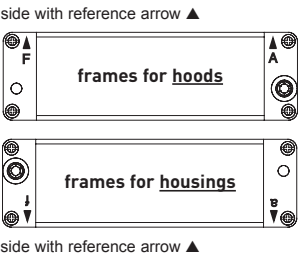
part No.	A (mm)	for housings size
CX 02 TM / TF	44	44.27
CX 03 TM / TF	57	57.27
CX 04 TM / TF	77,5	77.27 and 77.62
CX 06 TM / TF	104	104.27 and 104.62

Earth terminal

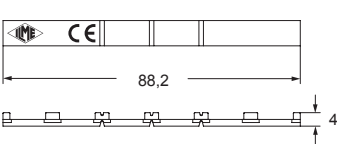
- large: for cables from 4-6 mm², AWG 12-10
- small: for cables from 1-2,5 mm², AWG 18-14

In order to accomodate larger PE conductor cross-sectional area, use CGT PE adapters, see page 319.

position of modules (contact side view)

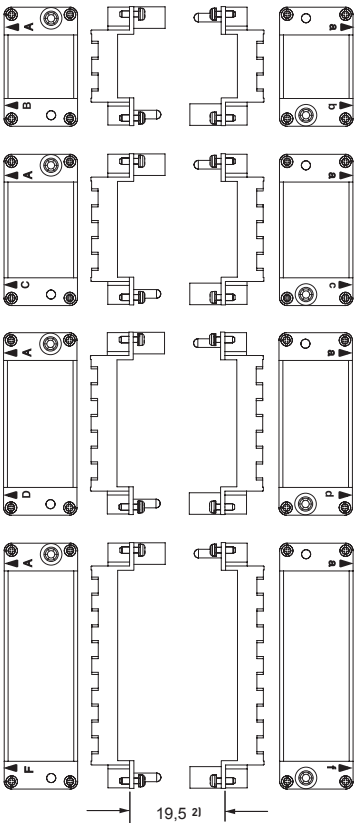


CX CFM (lock-in tab)



Polarisation of frames with relative
identification letters and couplings

frame for hoods ¹⁾ frames for housings ¹⁾



¹⁾ **Warning:**
The module support frames are marked:
- FOR HOODS: **upper-case A-B, A-C, A-D and A-F**
- FOR HOUSINGS: **lower-case a-b, a-c, a-d and a-f**
Positioning the modules in the frames according to the respective letters is ensuring the specular assembly of modules, for which the hood will be coupled correctly to the housing.

²⁾ Distance for:
- electric and fibre optic contacts: max 21 mm
- pneumatic contacts: max 20,5 mm

CGT 6.0 – CGT 10 – CGT 16 – CGT 25

PE terminal adapters for MIXO frames

- **PE terminal adapter CGT 6.0** made of nickel plated brass that allows to connect by crimping a 6 mm² / 10 AWG flexible copper conductor **to the small PE terminal** (2,5 mm² / 14 AWG) of a MIXO frame, in case the connector needs a second PE line sized 6 mm²/10 AWG when the large PE terminal (6 mm²/10 AWG) of the MIXO frame is already occupied by a large size PE conductor, by using the existing PE terminal adapter **CGT 16**, or the new ones for the large PE terminal, **CGT 10 or CGT 25**.

CGT 6.0



- **PE terminal adapters CGT 10 and CGT 25** made of nickel plated brass that allow to connect by crimping respectively a 10 mm² / 8 AWG or a 25 mm² / 4 AWG flexible copper conductor **to the large PE terminal** (6 mm²/10 AWG) of a MIXO frame.

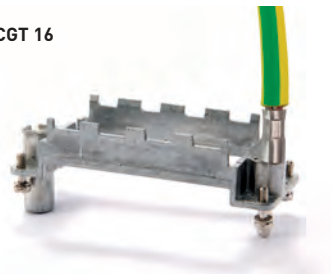
CGT 10



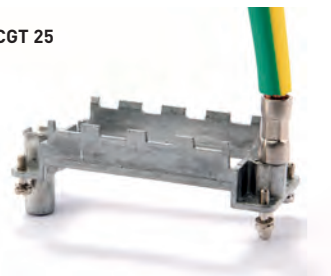
- They are offered in addition to the existing PE terminal adapter **CGT 16** for 16 mm² / 6 AWG protective earth conductor – introduced with MIXO 100A modules **CX 02 G and CX 01 G** – to give more flexibility for the combination of MIXO 100A and 70A high power modules with **multi-core cables**, that have the PE conductor of the same size of the phase conductors.

- Crimping is achieved by using the already available manual hydraulic crimping tool **CPPZ C** (Cembre HT 45) with hexagonal crimping dies **CGD 10 C** (for **CGT 10** with 10 mm² / 8 AWG and for **CGT 6.0** with 6 mm² / 10 AWG flexible copper conductors) and **CGD 25 C** (for **CGT 25** with 25 mm² / 4 AWG flexible copper conductors).

CGT 16



CGT 25





CGT 6.0 - CGT 10 - CGT 16 - CGT 25

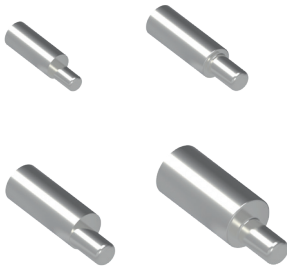
The modular inserts must be installed in suitable frames, which are then mounted in traditional enclosures or in COB panel supports.

frames for modular units page:
316 - 317

☒ **To be used** in surface mounting housings or low construction hoods.

Cannot be used with T-TYPE surface mounting housings and horizontal cable outlet hoods.

PE terminal adapter



headless screw M4X6



description	part No.	part No.
-------------	----------	----------

PE wire terminal adapter 6 mm² (10 AWG)	CGT 6.0
PE wire terminal adapter 10 mm² (8 AWG)	CGT 10
PE wire terminal adapter 16 mm² (6 AWG)	CGT 16
PE wire terminal adapter 25 mm² (4 AWG)	CGT 25

headless screw M4X6, stainless steel, kit of 10 pcs. ¹⁾	CR VGM4
--	----------------

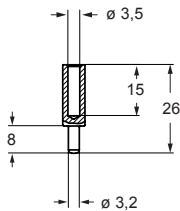
¹⁾ For the use with T-TYPE bulkhead housings and vertical entry hoods it is needed to replace the M4 screw of the 6 mm² PE contact of the frame with the headless screw **CR VGM4**.

How to use the PE terminal adapter

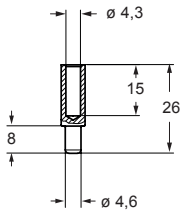
- 1) Strip 15 mm of flexible PE wire.
- 2) Crimp the cable on the CGT adapter by using the CPPZ C pliers with the dies as follows:
 - **CGD 10 C** for 6 mm² and 10 mm²
 - **CGD 16 C** for 16 mm²
 - **CGD 25 C** for 25 mm²
- 3) Fix the adapter tip in the larger earth terminal (6 mm²) for CGT 10, CGT 16, CGT 25 or in the smaller earth terminal (2,5 mm²) for CGT 6.0 of frames CX...TM/TF.

cURus pending

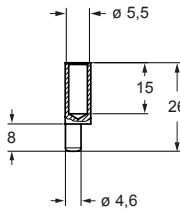
CGT 6.0



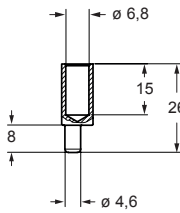
CGT 10



CGT 16

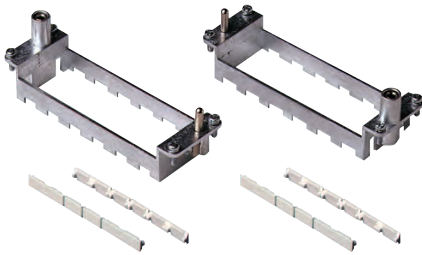


CGT 25



enclosures size:		page:
"44.27"	HNM	592 - 593
	C-TYPE IP65 or IP66/IP69, single lever	387 - 392
	V-TYPE IP65 or IP66/IP69, single lever	444 - 447
	E-Xtreme® corrosion proof	530 - 531
		542, 550 - 551
"57.27"	HNM	594 - 595
	C-TYPE IP65 or IP66/IP69, single lever	393 - 401
	V-TYPE IP65 or IP66/IP69, single lever	448 - 453
	E-Xtreme® corrosion proof	532 - 533
		543, 552 - 553
"77.27"	HNM	596 - 597
	C-TYPE IP65 or IP66/IP69, single lever	402 - 411
	V-TYPE IP65 or IP66/IP69, single lever	454 - 458
	E-Xtreme® corrosion proof	534 - 535
		544, 554 - 555
"104.27"	HNM	598 - 599
	C-TYPE IP65 or IP66/IP69, single lever	412 - 423
	V-TYPE IP65 or IP66/IP69, single lever	459 - 463
	E-Xtreme® corrosion proof	536 - 537
		545, 556 - 557
"77.62"	C-TYPE IP65 or IP66/IP69, single lever	424 - 429
	E-Xtreme® corrosion proof	546
"104.62"	C-TYPE IP65 or IP66/IP69, single lever	430
	E-Xtreme® corrosion proof	547
C-TYPE and V-TYPE 2-lever versions cannot be used to reach 5.000 matings.		

frames for modular units
with lock-in tab (included)



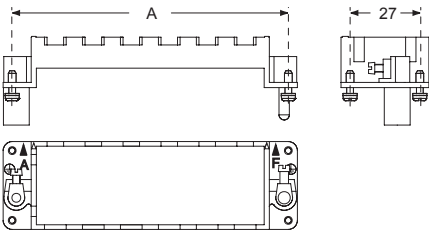
- Q 10.000 MATINGS WITH HNM FRAMES AND HNM ENCLOSURES
- Q 5.000 MATINGS WITH HNM FRAMES AND STANDARD ENCLOSURES, SINGLE LEVER

description	part No.	part No.
frames for modular units with lock-in tab included		
for 2 modular units - for housing size 44.27	RX 02 TM	RX 02 TF
for 3 modular units - for housing size 57.27	RX 03 TM	RX 03 TF
for 4 modular units - for housing size 77.27 and 77.62	RX 04 TM	RX 04 TF
for 6 modular units - for housing size 104.27 and 104.62	RX 06 TM	RX 06 TF

- die-cast zinc alloy frames
- protective earth (PE)
- possibility of mounting female and male modular units on the same frame
- frames supplied with lock-in tab to attach units
- polarisation on frames
- coding pins **CR..CX**
- for spare lock-in tab **CX CFM** see SPARE SPARTS catalogue

* Assignment of attribute "for hoods" or "for housings" is merely conventional: both types can be mounted either in a hood or in a housing. In a modular connector coupling there shall be always a frame type "M" and a frame type "F".

RX TM / TF



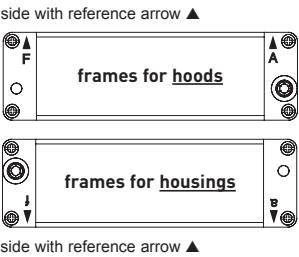
part No.	A (mm)	for housings size
RX 02 TM / TF	44	44.27
RX 03 TM / TF	57	57.27
RX 04 TM / TF	77,5	77.27 and 77.62
RX 06 TM / TF	104	104.27 and 104.62

Earth terminal

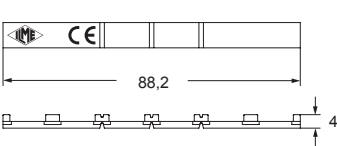
- large: for cables from 4-6 mm², AWG 12-10
- small: for cables from 1-2,5 mm², AWG 18-14

☑ In order to accomodate larger PE conductor cross-sectional area, use CGT PE adapters, see page 319.

position of modules (contact side view)

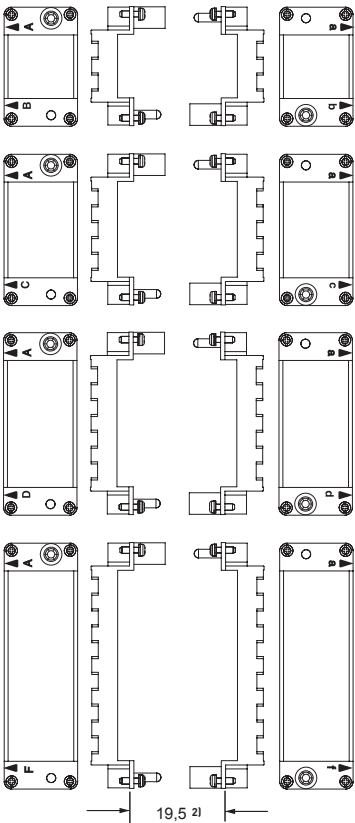


CX CFM (lock-in tab)



Polarisation of frames with relative identification letters and couplings

frame for hoods ¹⁾ frames for housings ¹⁾



- 1) **Warning:**
The module support frames are marked:
- FOR HOODS: **upper-case** A-B, A-C, A-D and A-F
- FOR HOUSINGS: **lower-case** a-b, a-c, a-d and a-f
- Positioning the modules in the frames according to the respective letters is ensuring the specular assembly of modules, for which the hood will be coupled correctly to the housing.

- 2) Distance for:
- electric and fibre optic contacts: max 21 mm
- pneumatic contacts: max 20,5 mm