

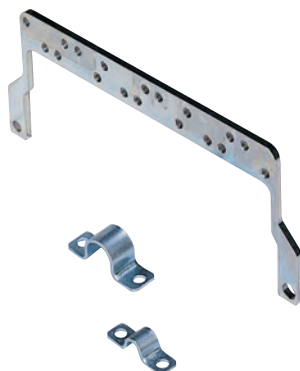
## CR anchorages

## inserts

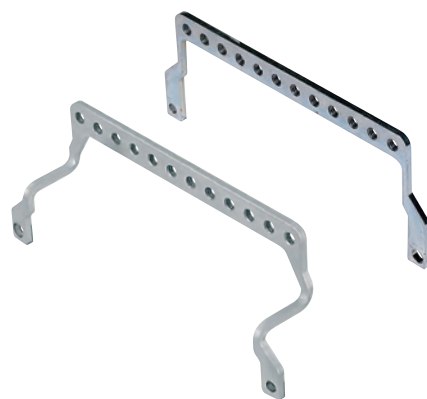
MIXO series

from page 262

shield earthing anchorage for shielded cables  
(for MIXO series)  
clamps for cables w/shield Ø 5 mm and  
Ø 10 mm



anchorages for several PE connection  
cables (for MIXO series)



description

part No.

part No.

in zinc plated steel, to be mounted on MIXO frames  
in bulkhead mounting housings, COB series enclosures  
and high construction hoods with top entry  
enclosures "44.27" and MIXO frames for 2 modular units  
enclosures "57.27" and MIXO frames for 3 modular units \*  
enclosures "77.27", "77.62" and MIXO frames for 4 modular units  
enclosures "104.27", "104.62" and MIXO frames for 6 modular units

CR 06 ST  
CR 10 ST  
CR 16 ST  
CR 24 ST

to be mounted on CR..ST earthing terminals  
clamp for shielding cables Ø 5 mm  
clamp for shielding cables Ø 10 mm

CR 05 CA  
CR 10 CA

in zinc plated steel, to be mounted on MIXO frames  
in bulkhead mounting housings, COB series enclosures  
and high construction hoods with top entry  
enclosures "44.27" and MIXO frames for 2 modular units  
enclosures "57.27" and MIXO frames for 3 modular units  
enclosures "77.27", "77.62" and MIXO frames for 4 modular units  
enclosures "104.27", "104.62" and MIXO frames for 6 modular units  
enclosures "104.27", "104.62" and MIXO frames for 6 modular units

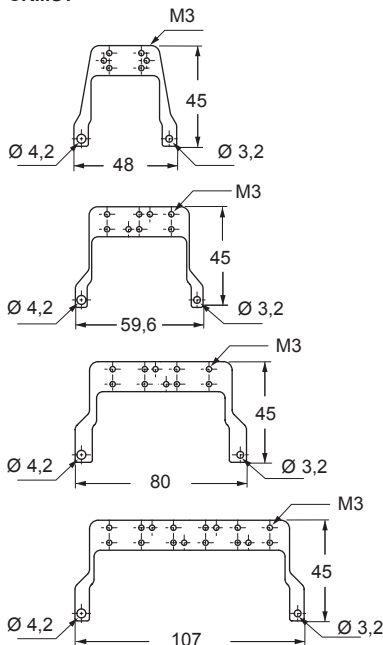
CR 06 AT  
CR 10 AT  
CR 16 AT  
CR 24 AT  
CR 24 ATD

\* Fixed using the standard screws of the MIXO frame,  
the draw size are supplied with a special M4 screw  
that replaces the standard one.

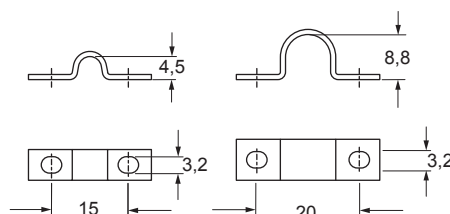
Anchorage CR .. ST are designed for installation on  
the frames of the MIXO modular connectors, for earth  
connecting the screening braid of shielded cables.

Anchorage CR .. AT / ATD are designed for installation  
on the frames of the MIXO modular frames for earth  
connecting several cables.

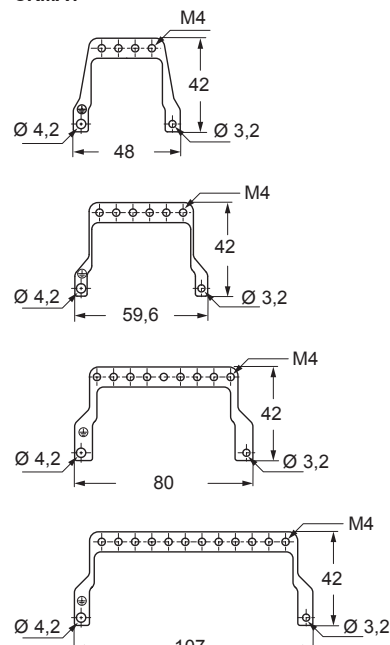
CR...ST



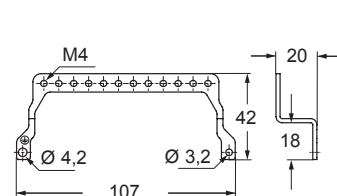
CR...CA



CR...AT



CR 24 ATD



## CR anchorages

inserts		page:
CD	40, 64 poles + ⊕	<b>70 and 72</b>
CDD	24, 42, 72, 108 poles + ⊕	<b>76 - 81</b>
CDS	9, 18, 27, 42 poles + ⊕	-
CDSH	9, 18, 27, 42 poles + ⊕	<b>86 - 89</b>
CDSH NC	6 poles + ⊕	<b>95</b>
CNE	6, 10, 16, 24 poles + ⊕	<b>110 - 113</b>
CSE	6, 10, 16, 24 poles + ⊕	-
CSH	6, 10, 16, 24 poles + ⊕	<b>110 - 113</b>
CSH S	6, 10, 16, 24 poles + ⊕	<b>122 - 125</b>
CCE	6, 10, 16, 24 poles + ⊕	<b>130 - 133</b>
CMSH	3+2, 6+2, 10+2 (aux) poles + ⊕	<b>136 - 140</b>
CSS	6, 10, 16, 24 poles + ⊕	<b>148 - 151</b>
CQE	10, 18, 32, 46 poles + ⊕	<b>168 - 171</b>
CQEE	40, 64 poles + ⊕	<b>176 - 177</b>
CP	6 poles + ⊕	<b>178</b>
CX	8/24, 6/36, 12/2 poles + ⊕	<b>194 - 199</b>

## ground terminals for shielded cables and for several earth connections



## clamps for cables Ø 5 mm and Ø 10 mm



## description

## part No.

## part No.

in zinc plated iron, to be fitted on connectors in bulkhead housings, COB series enclosures and high construction hoods with top entry  
 "44.27" enclosures and inserts  
 "57.27" enclosures and inserts  
 "77.27", "77.62" enclosures and inserts  
 "104.27", "104.62" enclosures and inserts  
 CSS "104.27" enclosures and inserts \*

**CR 06 SC**  
**CR 10 SC**  
**CR 16 SC**  
**CR 24 SC**  
**CR 24 SCA**

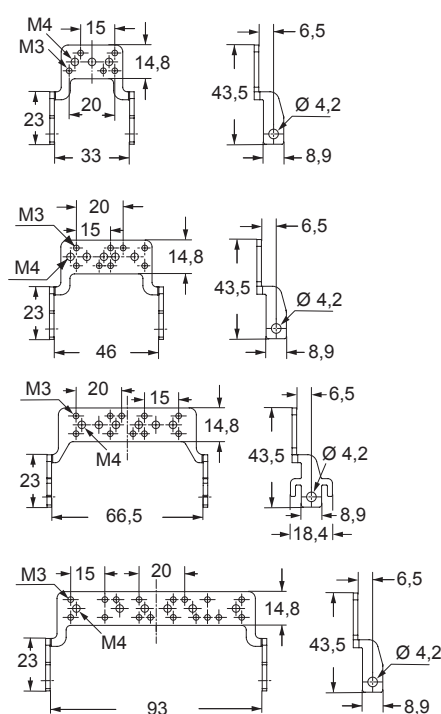
to be fitted on CR...SC anchors  
 in bulkhead mounting housings and high construction hoods  
 U-bolt for Ø 5 mm cable screening  
 U bolt for Ø 10 mm cable screening

**CR 05 CA**  
**CR 10 CA**

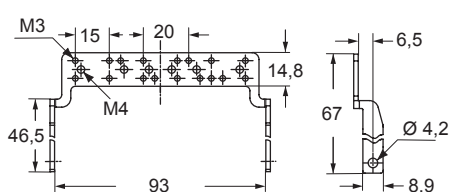
\* Can be used only in bulkhead housings.

The CR... SC anchors are fitted on connectors for connecting to earth multiple cables and screened cables braids.

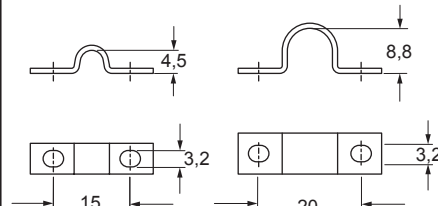
## CR...SC



## CR...SCA



## CR...CA



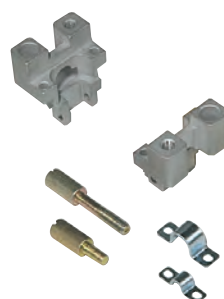
## CR anchorages

The CR..FS series anchorages are employed for use of connector inserts (normal or MIXO modular) without enclosures and enable anchoring cables with clamps to prevent transmitting traction forces to contacts. CR..SS anchorages (with grip to facilitate connector disconnection) are used for earth connecting of several conductors and/or of the screen of shielded cables.

### cable anchorages shield / earthing strain relief



### supports, screws and clamps for grip panels of cables outside enclosure



description

part No.

part No.

in zinc plated steel, to be mounted on:

inserts size "44.27" \* and MIXO frames for 2 modular units  
 inserts size "57.27" \* and MIXO frames for 3 modular units  
 inserts size "77.27" \* and MIXO frames for 4 modular units  
 inserts size "104.27" \* and MIXO frames for 6 modular units

**CR 06 FS**  
**CR 10 FS**  
**CR 16 FS**  
**CR 24 FS**

for shielded cables with grip handle, to be mounted on:

inserts size "77.27" \* and MIXO frames for 4 modular units  
 inserts size "104.27" \* and MIXO frames for 6 modular units

**CR 16 SS**  
**CR 24 SS**

supports in die-cast zinc, 2 pcs.

**CR SP**

equipped with fixing screws and washers for earth connection

short screws in zinc iron, 2 pcs.

**CR 26 V**

long screws in zinc iron, 2 pcs.

**CR 42 V**

to be mounted on CR..SS anchorage

clamp for shielding cables Ø 5 mm

**CR 05 CA**

clamp for shielding cables Ø 10 mm

**CR 10 CA**

\* Except CT, CTS and CTSE

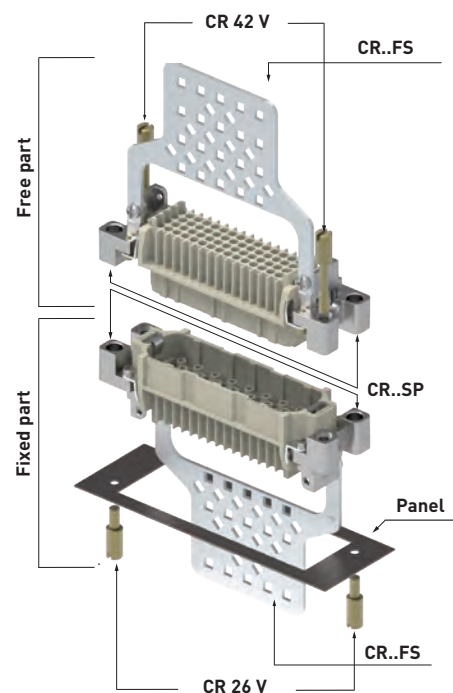
In the fixed part, a pair of **CR SP** supports is fitted on the connector, using its securing screws.

A **CR..FS** or **CR..SS** anchorage is fitted on the supports, using the supplied fixing screws and washers.

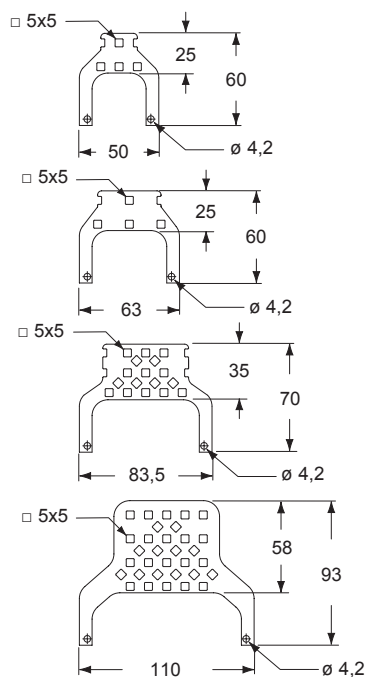
All parts are secured on the rear panel with the pair of **CR 26 V** short + + screws.

In the mobile part too, a pair of **CR SP** supports are fitted on the connector and a **CR..FS** or **CR..SS** anchorage is secured on it. The pair of **CR 42 V** screws fasten the mobile part to the fixed part.

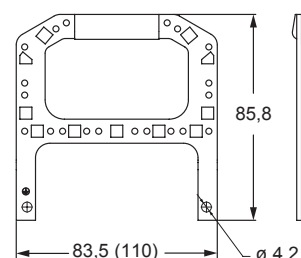
NOTE: By unscrewing the **CR 26 V** special short screws, the whole assembly (free part + fixed part) can be removed from the panel for inspection.



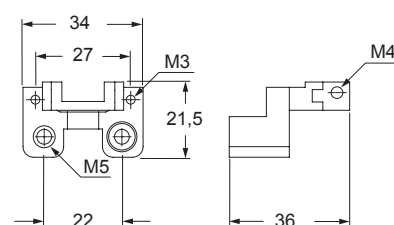
#### CR...FS



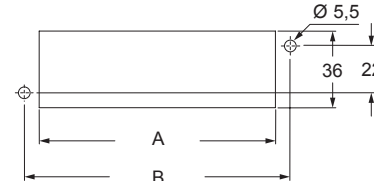
#### CR 16 SS (CR 24 SS)



#### CR SP

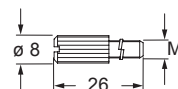


#### panel cut-out

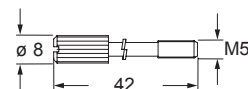


poles	06	10	16	24
A	52	65	85,5	112
B	65	78	98,5	125

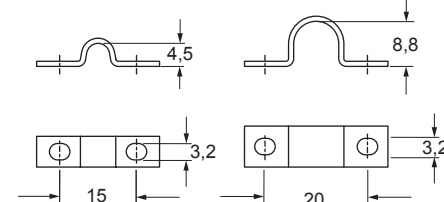
#### CR 26 V



#### CR 42 V

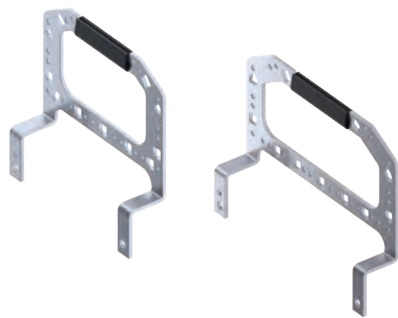


#### CR...CA



CR anchorages

anchorage for cables outside enclosure,  
equipped with fixing screws and washers



supports, screws and clamps for grip  
panels of cables outside enclosure



description	part No.	part No.
-------------	----------	----------

for cables, to be mounted on:  
inserts size "77.27" \* with CR SP support  
and MIXO frames for 4 inserts without support  
inserts size "104.27" \* with CR SP support  
and MIXO frames for 6 inserts without support

CR 16 SSD  
CR 24 SSD

support in die-cast zinc, 2 pcs. equipped with  
fixing screws and rings for earth connecting

CR SP  
CR 26 V  
CR 42 V

short screws in zinc plated steel, 2 pcs.  
long screws in zinc plated steel, 2 pcs.

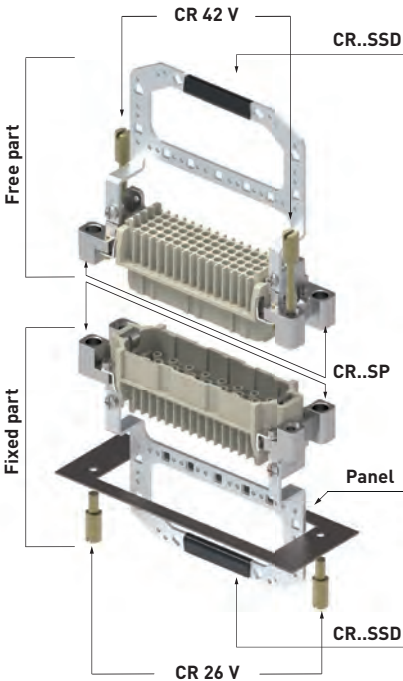
to be mounted on CR..SS anchorage  
clamp for (shielded) cables Ø 5 mm  
clamp for (shielded) cables Ø 10 mm

CR 05 CA  
CR 10 CA

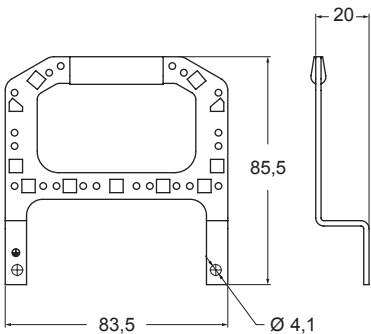
\* Except CT, CTS and CTSE

In the fixed part, a pair of **CR SP** supports is fitted on the connector insert, using the insert's fixing screws.  
A **CR..SSD** anchorage is then fitted on the **CR SP** supports, using the supplied fixing screws and washers.  
All parts are secured on the rear panel with a pair of **CR 26 V** special short screws.  
Also in the free part, a pair of **CR SP** supports is fitted on the connector insert and a **CR..SSD** anchorage is similarly secured on it. A pair of **CR 42 V** long screws fasten the free part to the fixed part.

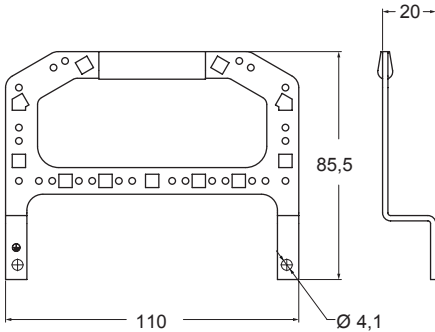
NOTE: By unscrewing the **CR 26 V** special short screws, the whole assembly (free part + fixed part) can be removed from the panel for inspection.



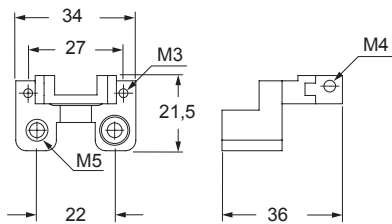
CR 16 SSD



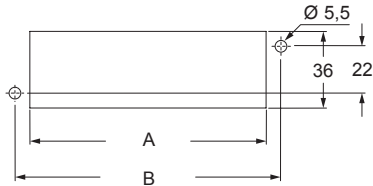
CR 24 SSD



CR SP

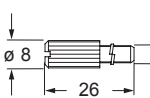


panel cut-out

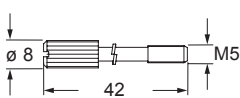


poles	06	10	16	24
A	52	65	85,5	112
B	65	78	98,5	125

CR 26 V



CR 42 V



CR...CA

