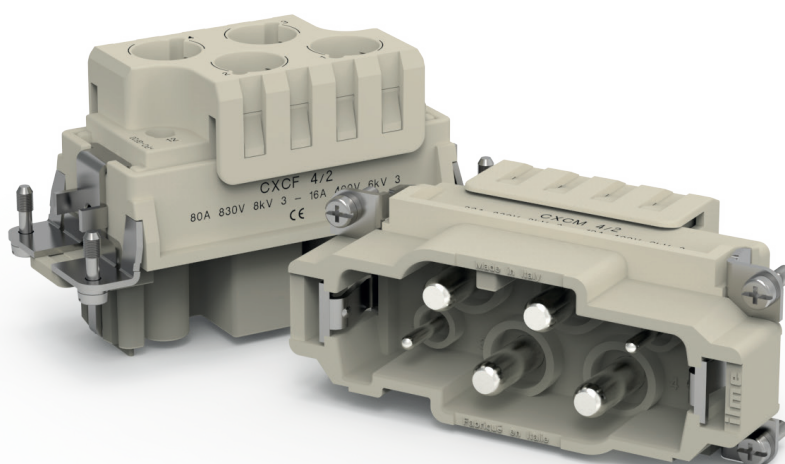

CXC SERIES - CRIMP COMBINED CONNECTOR

CXCF /M 4/2



CXC Combined power/auxiliaries crimp connector Series

4 poles + ⊕: 80 A 830 V 8 kV 3

2 poles + ⊕: 16 A 400 V 6 kV 3



Find more information on our products at www.ilme.com

TECHNICAL FEATURES

CXCF /M 4/2

For use with up to 4 removable crimp contacts series **CX7** (power side) and up to 2 removable crimp contacts series **CC** (auxiliary/signal side).

For use with working current on power contacts up to 80 A (see focus on page 22) and on auxiliary contacts up to 16 A.

Interchangeable and intermateable with the screw-type version **CXF/M 4/0** and **CXF/M 4/2** (see CN.19 catalogue pages 200-201), same voltage and current ratings.

NOTE – Where screw-type version of connector exists, e.g. **CX 4/2**, **CX 4/8**, to identify the crimp variant a C is being added in the code of the “crimp” version. Crimp versions allow on power poles use of conductors with cross-sectional area up to 25 mm² / 4-3 AWG.

Inserts made by UL 94V-0 glass reinforced polycarbonate, EN 45545-2:2015 compliant.

By employing crimp contacts, it covers all applications demanding the highest vibration resistance (e.g. railway rolling stock).

CX7 contacts available in 4 sizes (6.0 /10 /16 /25) to match equally sized conductors (mm²).

Removal tool for CX7 contacts:

CX7ES (improved shape of existing C7ES to better fit application in these inserts).

Removal tool for CC contacts:

CQES.

Max diameter of wire sheathings:

- 10 mm in the 4P power core section
- 4.5 mm in the 2P auxiliaries

- c (ECBT2/ECBT8),

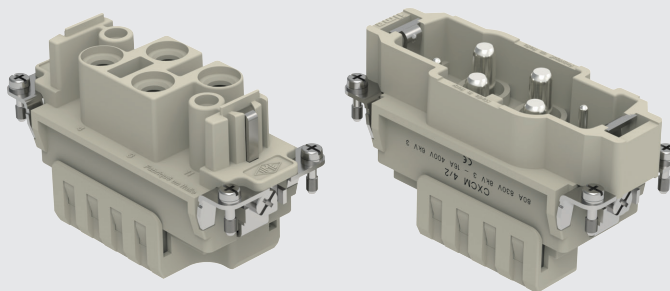
- CQC, BV pending.

RoHS: compliant without exemptions.

NOTE - The turned crimp contacts series **CX7** and **CC** are **RoHS** compliant with exemption **6(c)**.

**crimp variant
intermateable
with corresponding
screw-type version
CX 4/2, CX 4/0, to
cover all applications
demanding the highest
vibration resistance**

crimp contacts **CX7**
and **CC** series are
separately available



CXCF /M 4/2 4 poles (80 A - 830 V) + 2 poles (16 A - 400 V) + \oplus

enclosures:
size "77.27"

page:

C-TYPE IP65 or IP66/IP69	402 - 411
C7 IP67, two levers	439 - 440
V-TYPE IP65 or IP66/IP69, single lever	454 - 458
BIG hoods	470 - 471
T-TYPE IP65 insulating	484 - 485
T-TYPE / W IP66/IP69 insulating	491
HYGIENIC T-TYPE / H IP66/IP69	503
HYGIENIC T-TYPE / C IP66/IP69, -50 °C	508
W-TYPE for aggressive environments	523
E-Xtreme® corrosion proof	534 - 535, 544, 554 - 555
EMC	580
Central lever	609 - 611
LS-TYPE	622 - 623
IP68	640 - 643

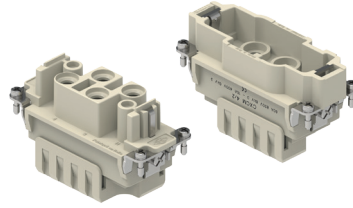
panel supports:
COB

652 - 653

enclosures:
bulkhead mounting housings, high construction housings
or high construction hoods

refer to CN.19 pages

inserts, crimp connections



80 A crimp contacts
silver plated



description

part No.

part No.

without contacts (to be ordered separately)
female inserts for female contacts
male inserts for male contacts

CXCF 4/2
CXCM 4/2

80 A female crimp contacts
6 mm² AWG 10
10 mm² AWG 8 - 7
16 mm² AWG 6 - 5
25 mm² AWG 4 - 3

CX7FA 6.0
CX7FA 10
CX7FA 16
CX7FA 25

silver plated

80 A male crimp contacts
6 mm² AWG 10
10 mm² AWG 8 - 7
16 mm² AWG 6 - 5
25 mm² AWG 4 - 3

CX7MA 6.0
CX7MA 10
CX7MA 16
CX7MA 25

- characteristics according to EN/IEC 61984 ratings:

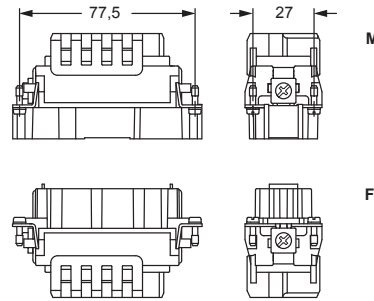
80 A 830 V 8 kV 3
16 A 400 V 6 kV 3

- us (ECBT2/ECBT8), EAC DNV certified
- CQC, BV pending
- rated voltage according to UL/CSA: 600 V
- insulation resistance: ≥ 10 G Ω
- Lower and Upper Limiting Temperatures (LLT ... ULT):
-40 °C ... +125 °C
- made by UL 94V-0 glass reinforced polycarbonate,
EN 45545-2:2015 compliant
- mechanical life: ≥ 500 cycles
- contact resistance: $\leq 0,3$ m Ω (4 power poles)
 ≤ 1 m Ω (2 auxiliary poles)

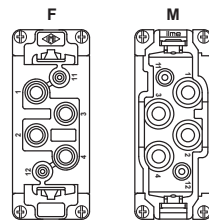
- it is recommended to crimp the contacts with crimping tools homologated by ILME (please see the crimping tool section 70 A contacts CX7F and CX7M series and 16 A contacts CCF, CCM series, on pages 708 - 741 of CN.19 catalogue).

- for max. current load see the connector inserts derating diagrams below; for more information see page 28 of CN.19 catalogue

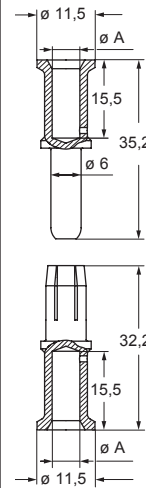
CXC 4/2



contacts side (front view)



CX7F and CX7M

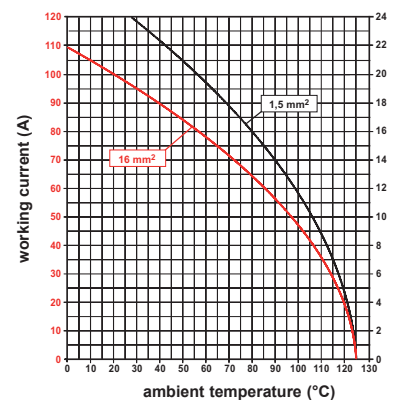
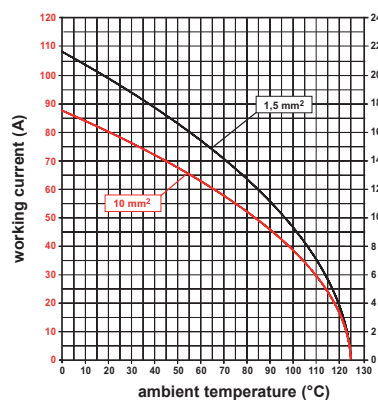
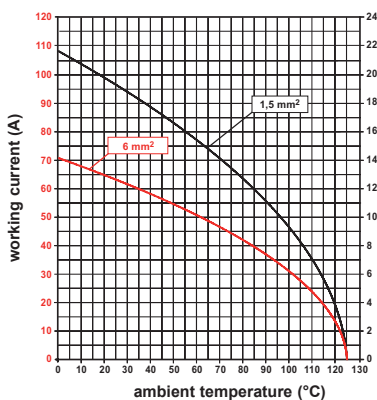


CX7F and CX7M contacts

conductor section (mm ²)	conductor slot ϕ A (mm)	conductor stripping length (mm)
6	3,5	15
10	4,3	15
16	5,5	15
25	7,0	15

CXC 4/2 poles connector inserts

Maximum current load derating diagram



16 A crimp contacts
silver plated



removal tools



description

part No.

part No.

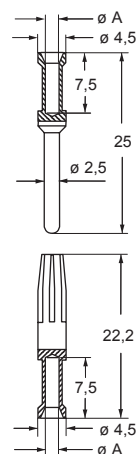
16 A female crimp contacts			silver plated	
0,14-0,37 mm ²	AWG 26-22	one groove		CCFA 0.3
0,5 mm ²	AWG 20	with no grooves		CCFA 0.5
0,75 mm ²	AWG 18	one groove (back side)		CCFA 0.7
1 mm ²	AWG 18	one groove		CCFA 1.0
1,5 mm ²	AWG 16	two grooves		CCFA 1.5
2,5 mm ²	AWG 14	three grooves		CCFA 2.5
3 mm ²	AWG 12	one wide groove		CCFA 3.0
4 mm ²	AWG 12	with no grooves		CCFA 4.0

16 A male crimp contacts			silver plated	
0,14-0,37 mm ²	AWG 26-22	one groove		CCMA 0.3
0,5 mm ²	AWG 20	with no grooves		CCMA 0.5
0,75 mm ²	AWG 18	one groove (back side)		CCMA 0.7
1 mm ²	AWG 18	one groove		CCMA 1.0
1,5 mm ²	AWG 16	two grooves		CCMA 1.5
2,5 mm ²	AWG 14	three grooves		CCMA 2.5
3 mm ²	AWG 12	one wide groove		CCMA 3.0
4 mm ²	AWG 12	with no grooves		CCMA 4.0

removal tools
for CX7 series contacts
for CC series contacts

CX7ES
CQES

CCF and CCM

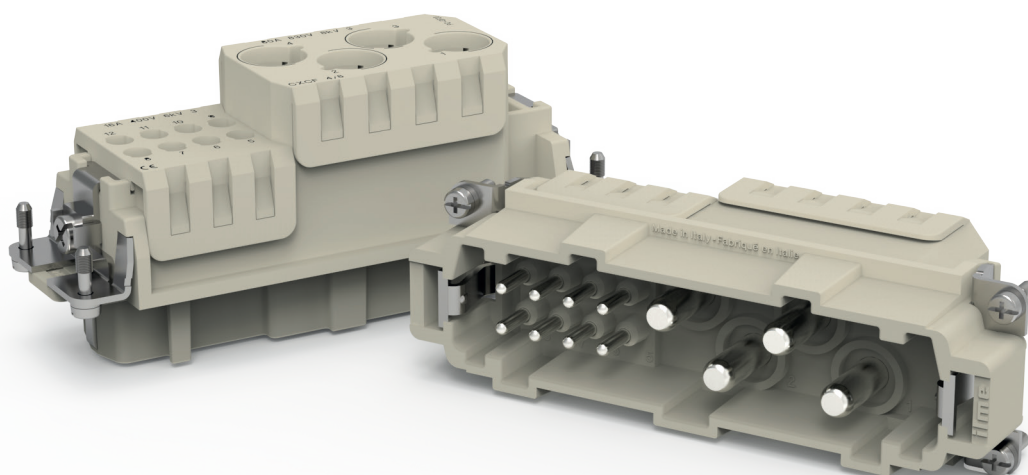


CCF and CCM contacts

conductor section (mm ²)	conductor slot $\varnothing A$ (mm)	conductors stripping length (mm)
0,14-0,37	0,9	7,5
0,5	1,1	7,5
0,75	1,3	7,5
1,0	1,45	7,5
1,5	1,8	7,5
2,5	2,2	7,5
3	2,55	7,5
4	2,85	7,5

CXC SERIES - CRIMP COMBINED CONNECTOR

CXCF /M 4/8



CXC Combined power/auxiliaries crimp connector Series

4 poles + \ominus : 80 A 400 V 6 kV 3

8 poles + \ominus : 16 A 230/400 V 4 kV 3



Find more information on our products at www.ilme.com

TECHNICAL FEATURES

CXCF /M 4/8

For use with up to 4 removable crimp contacts series **CX7** (power side) and up to 8 removable crimp contacts series **CC** (auxiliary/signal side).

For use with working current on power contacts up to 80 A (see focus on page 22) and on auxiliary contacts up to 16 A.

Interchangeable and intermateable with the screw-type version **CXF /M 4/8** (see CN.19 catalogue page 204), same voltage and current ratings. Inserts made by UL 94V-0 glass reinforced polycarbonate, EN 45545-2:2015 compliant.

NOTE – Where the screw-type version of a connector exists, e.g. **CX 4/2**, **CX 4/8**, to identify the crimp variant a C is being added in the code of the “crimp” version. Crimp versions allow on power poles use of conductors with cross-sectional area up to 25 mm² / 4-3 AWG.

By employing crimp contacts, it covers all applications demanding the highest vibration resistance (e.g. railway rolling stock, ships).

CX7 contacts available in 4 sizes (6.0 /10 /16 /25) to match equally sized conductors (mm²).

Removal tool for CX7 contacts:






CX7ES (improved shape of existing C7ES to better fit application in these inserts).

Removal tool for CC contacts:

CQES

Max diameter of wire sheathings:

- 10 mm in the 4P power core section
- 4.5 mm in the 8P auxiliaries


- c  (ECBT2/ECBT8),    

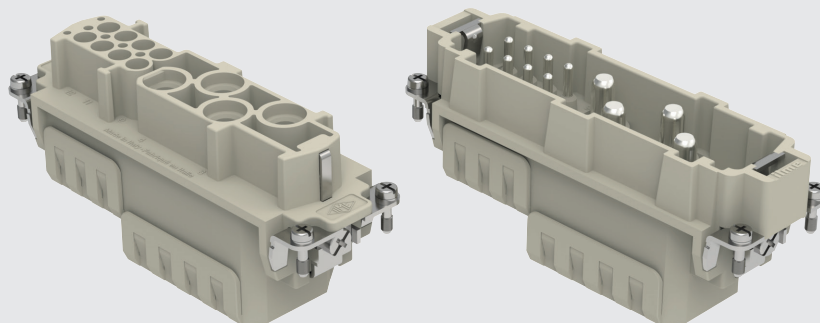
- CQC, BV pending.

RoHS: compliant without exemptions

NOTE - The turned crimp contacts series **CX7** and **CC** are **RoHS** compliant with exemption **6(c)**.

crimp variant
of CXF /M 4/8,
to cover all
applications
demanding the
highest vibration
resistance

 crimp contacts CX7
and CC series are
separately available



CXCF /M 4/8 4 poles (80 A - 400 V) + 8 poles (16 A - 230/400 V) + ⊕

enclosures:
size "104.27" ▶ page:

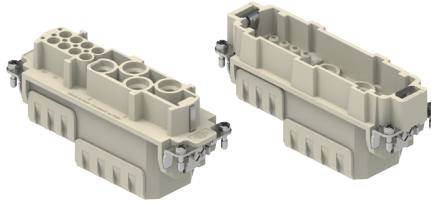
C-TYPE IP65 or IP66/IP69	412 - 423
C7 IP67, two levers	441 - 442
V-TYPE IP65 or IP66/IP69, single lever	459 - 463
BIG hoods	472 - 473
T-TYPE IP65 insulating	486 - 487
T-TYPE / W IP66/IP69 insulating	492
HYGIENIC T-TYPE / H IP66/IP69	504
HYGIENIC T-TYPE / C IP66/IP69, -50 °C	509
W-TYPE for aggressive environments	524
E-Xtreme® corrosion proof 536 - 537, 545, 556 - 557	
EMC	581
Central lever	612 - 614
LS-TYPE	624 - 625
IP68	644 - 647

panel supports:
COB 652 - 653

enclosures:
bulkhead mounting housings, high construction housings
or high construction hoods

▶ refer to CN.19 pages

inserts, crimp connections



80 A crimp contacts
silver plated



description	part No.	part No.
-------------	----------	----------

without contacts (to be ordered separately)
female inserts for female contacts
male inserts for male contacts

CXCF 4/8
CXCM 4/8

80 A female crimp contacts

6 mm ²	AWG 10
10 mm ²	AWG 8 - 7
16 mm ²	AWG 6 - 5
25 mm ²	AWG 4 - 3

CX7FA 6.0
CX7FA 10
CX7FA 16
CX7FA 25

silver plated

80 A male crimp contacts

6 mm ²	AWG 10
10 mm ²	AWG 8 - 7
16 mm ²	AWG 6 - 5
25 mm ²	AWG 4 - 3

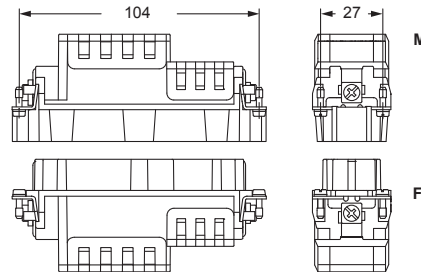
CX7MA 6.0
CX7MA 10
CX7MA 16
CX7MA 25

- characteristics according to EN/IEC 61984 ratings:

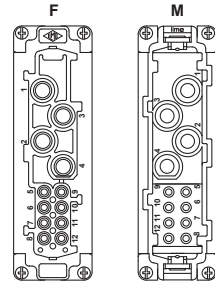
80 A 400 V 6 kV 3
16 A 230/400 V 4 kV 3

- **us** (ECBT2/ECBT8), **EAC** DNV certified
- CQC, BV pending
- rated voltage according to UL/CSA: 600 V
- insulation resistance: ≥ 10 GΩ
- ambient temperature limit: -40 °C ... +125 °C
- made by UL 94V-0 glass reinforced polycarbonate, EN 45545-2:2015 compliant
- mechanical life: ≥ 500 cycles
- contact resistance: ≤ 0,3 mΩ (4 power poles)
≤ 1 mΩ (8 auxiliary poles)
- **it is recommended to crimp the contacts with crimping tools homologated by ILME** (please see the crimping tool section 70 A contacts CX7F and CX7M series and 16 A contacts CCF, CCM series, on pages 708 - 741 of CN.19 catalogue).
- for max. current load see the connector inserts derating diagrams below; for more information see page 28 of CN.19 catalogue

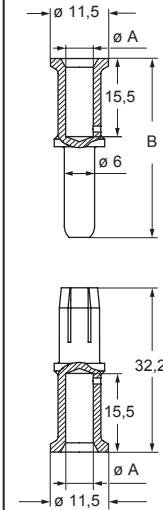
CXC 4/8



contacts side (front view)



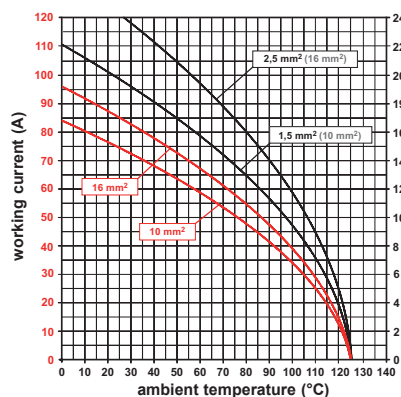
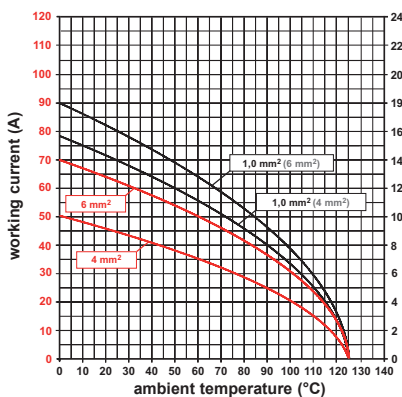
CX7F and CX7M



CX7F and CX7M contacts

conductor section (mm ²)	conductor slot ø A (mm)	B (mm)	conductor stripping length (mm)
6	3,5	36,0	15
10	4,3	35,2	15
16	5,5	35,2	15
25	7,0	35,2	15

CXC 4/8 poles connector inserts
Maximum current load derating diagram



16 A crimp contacts
silver plated



removal tools



description

part No.

part No.

16 A female crimp contacts

0,14-0,37 mm ²	AWG 26-22	one groove	CCFA 0.3
0,5 mm ²	AWG 20	with no grooves	CCFA 0.5
0,75 mm ²	AWG 18	one groove (back side)	CCFA 0.7
1 mm ²	AWG 18	one groove	CCFA 1.0
1,5 mm ²	AWG 16	two grooves	CCFA 1.5
2,5 mm ²	AWG 14	three grooves	CCFA 2.5
3 mm ²	AWG 12	one wide groove	CCFA 3.0
4 mm ²	AWG 12	with no grooves	CCFA 4.0

silver plated

16 A male crimp contacts

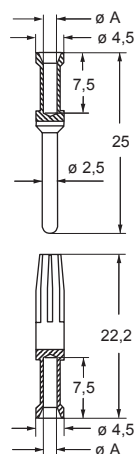
0,14-0,37 mm ²	AWG 26-22	one groove	CCMA 0.3
0,5 mm ²	AWG 20	with no grooves	CCMA 0.5
0,75 mm ²	AWG 18	one groove (back side)	CCMA 0.7
1 mm ²	AWG 18	one groove	CCMA 1.0
1,5 mm ²	AWG 16	two grooves	CCMA 1.5
2,5 mm ²	AWG 14	three grooves	CCMA 2.5
3 mm ²	AWG 12	one wide groove	CCMA 3.0
4 mm ²	AWG 12	with no grooves	CCMA 4.0

removal tools

for **CX7** series contacts
for **CC** series contacts

CX7ES
CQES

CCF and CCM



CCF and CCM contacts

conductor section (mm ²)	conductor slot ø A (mm)	conductors stripping length (mm)
0,14-0,37	0,9	7,5
0,5	1,1	7,5
0,75	1,3	7,5
1,0	1,45	7,5
1,5	1,8	7,5
2,5	2,2	7,5
3	2,55	7,5
4	2,85	7,5

RECOMMENDED TIGHTENING TORQUE

- insert terminal screws, including PE terminal and fixing screws
- axial screw insert, MIXO series CX 02 4A / CX 02 4B
- enclosures assembly screws

Insert terminal screws, including PE terminal and fixing screws

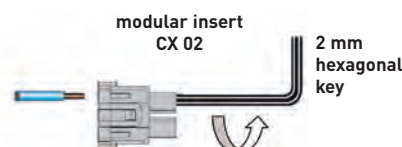
Increasing the tightening torque of terminal screws does not considerably improve the contact resistance. The screw torques are selected according to standard EN 60999-1, to provide excellent mechanical, thermal and electric behaviour. The conductor or terminal may be damaged if the recommended values are significantly exceeded.

Screw size	Connector type	Recommended tightening torque		Recommended size of screwdriver
		(Nm)	(lb.in)	
LINE TERMINALS				
M2,5	CT 40, 64	0,4	3,5	0,5 x 3
M2,6	CT 06..24	0,4	3,5	0,5 x 3
M3	CK	0,5	4,4	0,5 x 3
M3	CDA	0,5	4,4	Ph0 or 0,6 x 3,5
M3	CNE, CME	0,5	4,4	Ph0 or 0,8 x 4
M3	CX 4/2, CX 4/8 (16A)	0,5	4,4	0,6 x 3,5
M3	CX 4/8 Q (16A)	0,5	4,4	Ph0
M4	CP	1,2	10,6	Ph1 or 0,8 x 4
M6	CX 4/.. (80A)	2,5	22,1	1,0 x 5,5
PE TERMINAL				
M3	CK, CQ 05, CQ 07, CQ 12	0,5	4,4	0,5x3
M4	all series except CD 15, CD 25, CDA, CDC, CSAH, MIXO	1,2	10,6	Ph2 or 1,0 x 5,5
M3,5	series CD 15, CD 25, CDA, CDC, CSAH	0,8	7,1	Ph1 or 0,8 x 5,5
M3	small PE terminal, MIXO frames series	0,5	4,4	Ph1 or 1,0 x 4,5
M4	large PE terminal, MIXO frames series	1,2	10,6	Ph1 or 1,0 x 5,5
M4	PE terminal, MIXO ONE enclosures	1,2	10,6	Ph1 or 1,0 x 5,5
FASTENING SCREWS				
M3	CK, CKS, CKSH, CD 07, CD 08, CQ 05, CQ 07, CQ 12, CQ 21, CQ4 02 /02 H, CQ4 03, CX 1/2 BD	0,5	4,4	Ph1 or 0,8 x 5,5
M3	screw for fastening inserts to enclosures of all series except T-TYPE, CQ-MQ 08 and MIXO ONE	0,8	7,1	Ph1 or 0,8 x 4
Ø 2,9	screws for fastening "32.13" inserts CQ 04/2, CQ 08, CQ 17 to CQ-MQ 08 enclosures	0,7	6,2	Ph1
M3	screw for fastening inserts to T-TYPE enclosures	0,5	4,4	Ph1 or 0,8 x 4
Ø 2,9	series MIXO ONE enclosures, assembly of top and bottom parts	0,8	7,1	Ph1
M4	CYR 16.3, CYR 24.4 cable pass-through hoods, assembly of two halves	1,2	10,6	Ph2 or 1,0 x 5,5
M4	CYG 16 in-line joint, assembly of two halves and mounting of two bulkhead mounting housings size "77.27"	1,2	10,6	Ph2 or 1,0 x 5,5
M5	series BIG enclosures, assembly of top and bottom parts	1,0	8,8	Ph2

Axial screw insert, MIXO series CX 02 4A / CX 02 4B

The connections of the conductors to the female and male inserts are made via axial screw. Fully insert the stripped wire in the back of the contact (axial screw terminals are supplied fully opened); while holding the wire down, insert a 2 mm hexagonal key in the front of the contact and tighten to recommended torque. After assembling the complete connector periodically check that the contact is screwed tight by re-applying the proper tightening torque.

- Usable conductor cross-sections (EN 60228 Class 5):
 - from 2,5 to 8 mm² (14 AWG to 10 AWG) (CX 02 4AF/M)
 - from 6 to 10 mm² (10 AWG to 8 AWG) (CX 02 4BF/M)
 - (extra-flexible EN 60228 class 6: 2,5... 6 mm² (14 AWG to 10 AWG))
- Use only stranded flexible copper conductors
- Do not twist the strands!
- Tightening torque with 2 mm hexagonal Allen key:
 - 1,5 Nm (13,3 lb.in) max for conductors with section 2,5 ... 4 mm² (14 AWG to 12 AWG)
 - 2 Nm (17,7 lb.in) max for conductors with section 6 ... 10 mm² (10 AWG to 8 AWG)
- Stripping length: 8+1 mm



Enclosures assembly screws

In the table below, the recommended minimum and maximum tightening torque to apply to the fixing screws of ILME bulkhead mounting housings are shown, assuming the use of steel screws with 8.8 resistance class and a good fixing panel surface according to the requirements mentioned therein.

Series	Number of screws	Screw size	Recommended torque		Flange sealing element
			(Nm)	(lb.in)	
CK/MK, CKX, CKA/MKA, CQ	2	M3	0,8 – 1,0	7,1 – 8,9	Gasket
MIXO ONE	4	M3	0,5 – 0,9	4,4 – 8,0	Gasket
CZI 15 /25	4	M3	0,8 – 1,0	7,1 – 8,9	Gasket
CHI 50	4	M4	1,2 – 1,8	10,6 – 15,9	Gasket
CHI 06 /10 /16 /24	4	M4	0,8 – 1,2	7,1 – 10,6	Gasket
CHI 32	4	M4	1,2 – 1,8	10,6 – 15,9	Gasket
CHI 48	4	M6	3,0 – 3,6	26,6 – 31,9	Gasket
CGK/MGK (IP68)	2	M4	0,8 – 1,2	7,1 – 10,6	O-ring
CGI/ MGI 06/ 10/ 16/ 24 (IP68)	2	M6	3,0 – 3,6	26,6 – 31,9	O-ring
T-TYPE, T-TYPE/H, T-TYPE/C, T-TYPE/ W	4	M4	0,8 – 1,2	7,1 – 10,6	Gasket

To guarantee the declared IP degree of protection of the housings reported in this catalogue, according to EN IEC 60529 or to the relevant Type rating per ANSI/UL 50 and 50E (for those products bearing approval to those ratings), the surface of the mounting panel must meet the following requirements (definitions are provided in ISO 4287 standard):

- Waviness $Wt \leq 0,2$ mm over a distance of 200 mm (measured on the panel without load)
- Roughness $Ra \leq 16$ μ m

NOTE: The values of tightening torque indicated in the above table are just recommended values, that must be related – by the designer of the final application – to the resistance class of the screws (not included in the delivery), with the assumption that the mounting panel is sufficiently rigid (stiff). If the deflection of the panel, under the effect of tightening the screws, is greater than 0,7 mm over a distance of 100 mm, it is necessary to use the counter-flanges mentioned in our catalogue or the special flange gaskets available upon request (please contact our Sales Department). For the CGI/MGI IP68 enclosures the specific counter-flanges mentioned in our catalogue are always recommended.

Enclosures locking screws

Series	Number of screws	Screw size	Recommended tightening torque		Recommended size of screwdriver
			(Nm)	(lb.in)	
CGK/MGK	2	M4	1,2	10,6	1,0 x 5,5 or 7 mm hexagonal key
CG/IMG	2	M6	2,5	22,1	1,6 x 10 or 10 mm hexagonal key

RANGE OF CONDUCTOR CROSS-SECTIONAL AREA AND STRIPPING LENGTH

Connector inserts connection technique	Range of conductor cross-sectional area		Stripping length (mm)
	(mm ²)	AWG	
Screw			
CK	0,75 – 2,5	18 – 14	6
CX 4/2, CX 4/8 (poles 16A) ¹⁾	0,75 – 4	18 – 12	7
	0,75 – 2,5	18 – 14	7
CNE ¹⁾	0,5 – 4	20 – 12	7
CNE..X	0,25 – 2,5	24 – 14	7
CDA ¹⁾	0,5 – 4	20 – 12	7
CDA..X	0,25 – 2,5	24 – 14	7
CT 06..24	0,75 – 2,5	18 – 14	12
CT 40 and 64	0,75 – 2,5	18 – 14	12
CME ¹⁾	0,5 – 4	20 – 12	7
CME..X	0,5 – 2,5	20 – 14	7
CP ¹⁾	0,75 – 6	18 – 10	10,5
CX 4/.. (80A poles)	4 – 16	12 – 5	14
Crimp			
MIXO (5A), CX 25 IB	0,08 – 0,75	28 – 18	4
CQ 21	0,08 – 0,5	28 – 20	4
CDD, CD, MIXO (10A), CQ 12, CQ 07	0,14 – [2,5]*	26 – 14	8 – * [6 for 2,5 mm ²]
CCE, CDC, CMCE, CQ, CQE, CQEE, MIXO (16A)	0,14 – 4	26 – 12	7,5
CX, MIXO (40A), CQ4 03	1,5 – 2,5	16 – 14	9
	4 – 6	12 – 10	9,6
MIXO (70A)	10 – 25	7 – 4	15
MIXO (100A), CX 6/6	10 – 35	7 – 2	15
MIXO (200A)	16 – 70	6 – 2/0	15
Spring			
CSE, CSH, CTSE 06..24, CMSH, MIXO [CX 05 S ²⁾ , CX 05 SH], CSS	0,14 – 2,5	26 – 14	9 - 11
CTS 40/64	0,14 – 2,5 unprepared	26 – 14 unprepared	9 - 11
	0,14 – 1 prepared	26 – 18 prepared	
CKS, CKSH, CDS, CDSH, CSAH	0,14 – 2,5 unprepared	26 – 14 unprepared	9 - 11
	0,14 – 1,5 prepared	26 – 16 prepared	

¹⁾ For CNE, CDA, CP, CME, "CX 4/8 – pole 16A" series connectors with screw terminal and conductor protection plate, the use of ferrules is not necessary (= unprepared conductor). The use of ferrules (= prepared conductor) causes a reduction in maximum useful cross-section to the lower size (e.g. 4 mm² unprepared - 2,5 mm² prepared).

²⁾ Available upon request.

LOAD CURVES

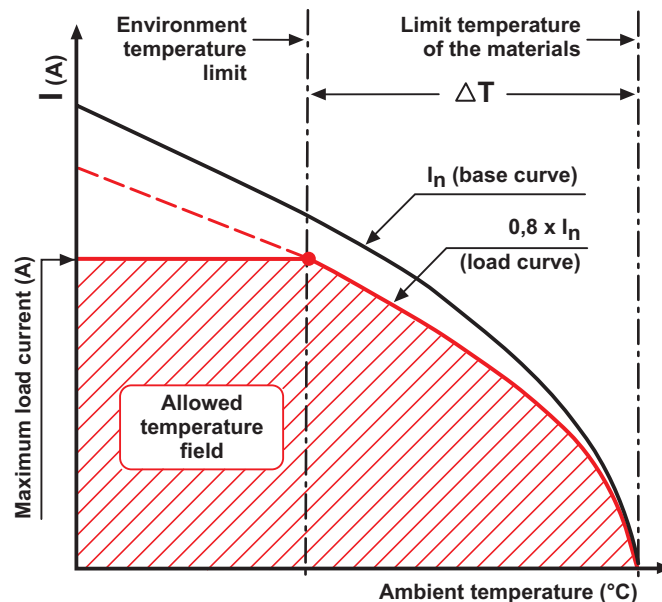
The permitted current carrying capacity for connectors is variable: it becomes lower with the increase of the number of poles and of the ambient temperature in which the connector is installed and it depends upon the thermal properties of the material used for the contacts and the insulating parts including those of the type of conductor used. The current carrying capacity is obtained from the load curves which are constructed according to standard IEC 60512-5-2 for currents circulating simultaneously in all poles.

The limit current curves express current values that determine the achievement of the upper limit temperature of the materials. The choice of the permanent load applicable on the contacts **must be made within the field of operation possible delimited by the above mentioned curves.**

Since use of connectors at the limit values of their characteristics is not recommended, the **base curve** is de-rated. The reduction of the load currents to 80% defines the correction curve where both the maximum permissible contact resistances and the inaccuracy of the temperature measurements are sufficiently taken into consideration.

The correction curve represents the final **limit current curve (load curve)** as defined by standard IEC 60512-5-2. It therefore bears in consideration the differences between the various connector inserts, as well as errors in the temperature measurements.

All the load curves presented in this catalogue include the correction. See figure below.



Legend

Maximum load current (A)

Value for which the connector reaches the upper limit temperature of the material at the corresponding ambient temperature intersected on the load curve.

Limit temperature of the materials

Value determined by the characteristics of the material used. The sum of the environmental temperature and the increase of the ΔT (temperature rise) caused by the current flow must not exceed the limit temperature of the materials.

Environment temperature limit

The environmental conditions must not exceed this value. It may be known and determines the maximum load current, or it may be directly obtained from the load curve.

Base curve

Set of current and temperature values obtained from laboratory tests and influenced by the connector's characteristics (number of poles, construction shape, thermal conductivity of the materials, etc.) and the cross-section of the conductor used.

Load curve (limit current curve)

Obtained from the base curve via the safety coefficient.

ΔT (temperature rise)

Temperature rise produced by a permanent current circulating through all the poles of a connector coupling; difference between the upper limit temperature of the material and the ambient temperature obtained on the limit current curve.