

Thermoplastic and metallic enclosures size "21.21" for standard or aggressive environments

SUM-UP

- ☐ For use with all size "21.21" connector
- ☐ Thanks to the inner coding key differently shaped between metallic enclosures (trapezoidal cross-section) and insulating enclosures (rectangular cross-section inscribed in the trapeze), connector inserts size "21.21" having a floating PE contact (e.g. CDF/M 07) while for use at voltages higher than SELV (safety extra-low voltage) are prevented to fit into metallic enclosures CKA-MKA, CGK-MGK, as they would not provide the required PE connection to the enclosure. The corresponding outer coding keyway of all "21.21" inserts having the PE contact able to guarantee bonding to earth to the metallic enclosure or of those inserts deemed to be used only at SELV is similarly trapezoidal, thus these inserts fit into all enclosures. Insulating "21.21" enclosures accept all "21.21" inserts.
- ☐ CGK-MGK IP68 enclosures (currently IP66/IP68/IP69 reali) available both with 2-screw locking or by 2-bayonet locking (types with suffix B)



- ✓ UL certified for USA and Canada for Type 4, 4X and 12 degrees of protection (enclosure type ratings, equivalent to NEMA rating), printed on the packaging.
IP44 degree of protection, IP66/IP67/IP69 by using the special fixing screw + gasket kit **CKR 65(D)** separately available, and suitable cable outlet device.
IP66/IP68/IP69 degree of protection for CGK-MGK enclosures equipped with **CKR 65(D)** kit.

✎ Characteristics of materials for CK and MK series

- Insulating enclosures in self-extinguishing light grey RAL 7035 or jet black RAL 9005 thermoplastic material;
- metal enclosures in die cast zinc or aluminium alloy, according to model;
- metal enclosures with epoxy-polyester thermosetting powder coating grey RAL 7040;
- gaskets in anti-aging, oil-resistant, grease-resistant and fuel-resistant NBR vinyl nitrile elastomer provided on the "21.21" male inserts (according to model), glued on some hood models and some cover models, or provided as flange gasket (according to model);
- metallic enclosures with block locking lever in stainless or galvanized steel;
- insulating enclosures with single-block locking lever in self-extinguishing thermoplastic material (CK-MK) or with stainless steel lever (CKX- MKX).



CK - MK standard insulating version

inserts		page:
CK	3 poles + ⊕	58
CK	4 poles + ⊕	58
CKS	3 poles + ⊕	-
CKS	4 poles + ⊕	-
CKSH	3 poles + ⊕	63
CKSH	4 poles + ⊕	63
CD	7 poles + ⊕	66
CD	8 poles	67
CQ4	2 poles + ⊕	182
CQ4 H	2 poles + ⊕	183
CQ4	3 poles + ⊕	184
CQ	5 poles + ⊕	186
CQ	7 poles + ⊕	187
CQ	12 poles + ⊕	189
CQ	21 poles	190

only for I (straight) housings (if the counterpart has glued gasket):

CJ KF	223
CJK 8FT	226
CJK 8IFT	226, 228
CUK 2FT	236
CUK 3FT	236
CLK 04 SC	239
CX 1/2 BD	243
CXL 2/4 SF, CXL 2/4 SM	250
CXL SF, CXL SM	250

bulkhead mounting housings



angled bulkhead mounting housings

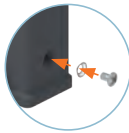


description	part No.	part No. (entry Pg 11)	part No. (entry M20)
with lever	CK 03 I (light grey RAL 7035)		
with lever	CK 03 IN (jet black RAL 9005)		
without cable entry, with lever 1)		CK 03 IA (light grey RAL 7035)	
without cable entry, with lever 1)		CK 03 IAN (jet black RAL 9005)	
with cable entry and lever 1)		CK 03 IAPS (light grey RAL 7035)	MK IAP20 (light grey RAL 7035)
with cable entry and lever 1)		CK 03 IAPNS (jet black RAL 9005)	MK IAPN20 (jet black RAL 9005)
gasket and screw kit for IP66/IP67/IP69 2)	CKR 65	CKR 65	
gasket and screw kit for IP66/IP67/IP69 2) specific for CD 07/08 inserts	CKR 65 D	CKR 65 D	

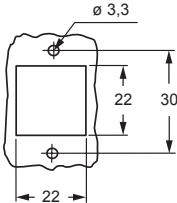
1) Not suitable for CQ4 series inserts

- 2) To obtain the IP66/IP67/IP69 degree of protection it is necessary to replace the fixing screw supplied with all inserts, with the one with gasket included in the kit (to be purchased separately) **except for** the inserts listed below (already supplied with a fixing screw with gasket):
- CQF/M 07, CQF/M 12
 - CJ KF
 - CJK 8FT /8IFT
 - CUK 2FT /3FT
 - CX 1/2 BDF/M
 - CLK 04 SCF /SCF-H /SCM
 - CXL 2/4 SF /SM, CXL SF/M

NOTE: The enclosure shown here is an example. The screw and sealing gasket kit can be used with all enclosures' part nos. in this page



panel cut-out for enclosures

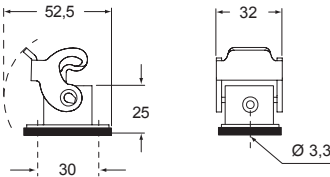


Type 12
Type 4/4X only
with CKR 65 (D)

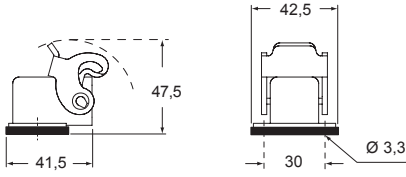


IP66/IP67/IP69 with CKR 65 (D) 2)

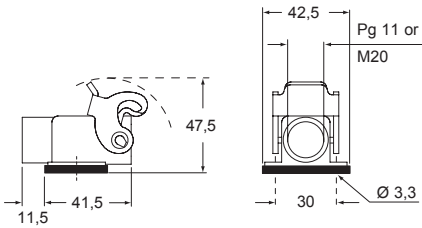
CK I - CK IN



CK IA - CK IAN



CK IAPS - CK IAPSN and MK IAP - MK IAPN



CK - MK standard insulating version

inserts

CK	3 poles + ⊕	58
CK	4 poles + ⊕	58
CKS	3 poles + ⊕	-
CKS	4 poles + ⊕	-
CKSH	3 poles + ⊕	63
CKSH	4 poles + ⊕	63
CD	7 poles + ⊕	66
CD	8 poles	67
CQ4	2 poles + ⊕	182
CQ4 H	2 poles + ⊕	183
CQ4	3 poles + ⊕	184
CQ	5 poles + ⊕	186
CQ	7 poles + ⊕	187
CQ	12 poles + ⊕	189
CQ	21 poles	190

page:

hoods



covers



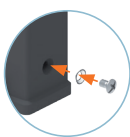
description	part No. (entry Pg 11)	part No. (entry M20)	part No. (with eyelet)	part No. (with loop)
with pegs, top entry	CK 03 VS (light grey RAL 7035)	MK V20 (light grey RAL 7035)		
with pegs, top entry	CK 03 VNS (jet black RAL 9005)	MK VN20 (jet black RAL 9005)		
with pegs, side entry 1)	CK 03 VAS (light grey RAL 7035)	MK VA20 (light grey RAL 7035)		
with pegs, side entry 1)	CK 03 VANS (jet black RAL 9005)	MK VAN20 (jet black RAL 9005)		
with lever, top entry	CK 03 VGS (light grey RAL 7035)	MK VG20 (light grey RAL 7035)		
with lever, top entry	CK 03 VGNS (jet black RAL 9005)	MK VGN20 (jet black RAL 9005)		
with pegs and gasket, for female inserts			CK 03 C (light grey RAL 7035)	CK 03 CS (light grey RAL 7035)
with pegs and gasket, for female inserts			CK 03 CN (jet black RAL 9005)	CK 03 CSN (jet black RAL 9005)
with pegs, for male inserts			CK 03 CA (light grey RAL 7035)	CK 03 CAS (light grey RAL 7035)
with pegs, for male inserts			CK 03 CAN (jet black RAL 9005)	CK 03 CANS (jet black RAL 9005)
with lever and gasket, for female inserts				CK 03 CX (light grey RAL 7035)
with lever and gasket, for female inserts				CK 03 CXN (jet black RAL 9005)
with lever, for male inserts				CK 03 CXA (light grey RAL 7035)
with lever, for male inserts				CK 03 CXAN (jet black RAL 9005)
gasket and screw kit for IP66/IP67/IP69 2)	CKR 65			
gasket and screw kit for IP66/IP67/IP69 2)	CKR 65 D			
specific for CD 07/08 inserts				

1) For CQ4 series inserts please check with our commercial office

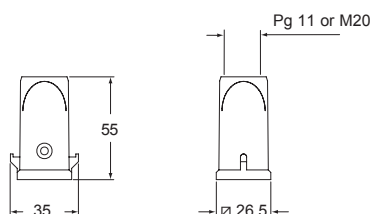
2) To obtain the IP66/IP67/IP69 degree of protection it is necessary to replace the fixing screw supplied with all inserts, with the one with gasket included in the kit (to be purchased separately) **except for** the inserts listed below (already supplied with a fixing screw with gasket):

- CQF/M 07, CQF/M 12

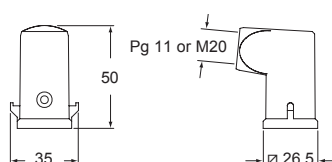
NOTE: The enclosure shown here is an example. The screw and sealing gasket kit can be used with all enclosures' part nos. in this page



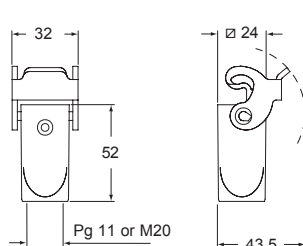
CK VS - CK VNS and MK V - MK VN



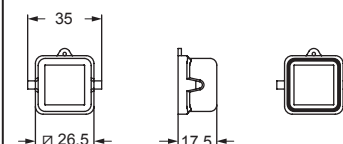
CK VAS - CK VANS and MK VA - MK VAN



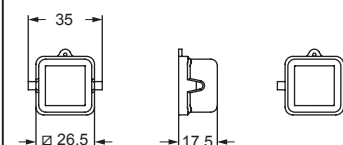
CK VGS - CK VGNS and MK VG - MK VGN



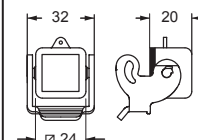
CK C - CK CN - CK CS



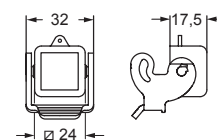
CK CA - CK CAN - CK CAS



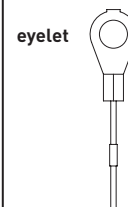
CK CX - CK CXN



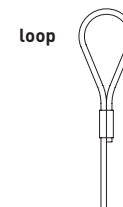
CK CXA - CK CXAN



For fixing on housings



For fixing on hoods



CALUS

Type 12
Type 4/4X only
with CKR 65 (D)



IP66/IP67/IP69 with CKR 65 (D) 2)



MK standard insulating version

inserts		page:
CK	3 poles + ⊕	58
CK	4 poles + ⊕	58
CKS	3 poles + ⊕	-
CKS	4 poles + ⊕	-
CKSH	3 poles + ⊕	63
CKSH	4 poles + ⊕	63
CD	7 poles + ⊕	66
CD	8 poles	67
CQ4	2 poles + ⊕	182
CQ4 H	2 poles + ⊕	183
CQ4	3 poles + ⊕	184
CQ	5 poles + ⊕	186
CQ	7 poles + ⊕	187
CQ	12 poles + ⊕	189
CQ	21 poles	190

hood



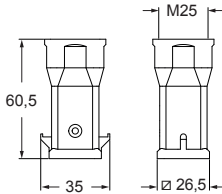
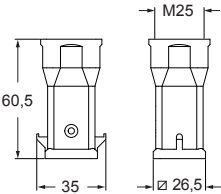
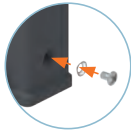
hood



description	part No. (entry M25)	part No. (entry M25)
with pegs, top entry	MK V25 (light grey RAL 7035)	MK VN25 (jet black RAL 9005)
with pegs, top entry		
gasket and screw kit for IP66/IP67/IP69 1)	CKR 65	CKR 65
gasket and screw kit for IP66/IP67/IP69 1)		
specific for CD 07/08 inserts	CKR 65 D	CKR 65 D

1) To obtain the IP66/IP67/IP69 degree of protection it is necessary to replace the fixing screw supplied with all inserts, with the one with gasket included in the kit (to be purchased separately) **except for** the inserts listed below (already supplied with a fixing screw with gasket):
- CQF/M 07, CQF/M 12

NOTE: The enclosure shown here is an example.
The screw and sealing gasket kit can be used with all enclosures' part nos. in this page



Type 12
Type 4/4X only
with CKR 65 (D)



IP66/IP67/IP69 with CKR 65 (D) 1)

MK standard insulating version

inserts	page:
CK 3 and 4 poles + ⊕	58
CKS 3 and 4 poles + ⊕	-
CKSH 3 and 4 poles + ⊕	63
CD 7 poles + ⊕	66
CD 8 poles	67
CQ4 2 poles + ⊕	182
CQ4 H 2 poles + ⊕	183
CQ4 3 poles + ⊕	184
CQ 5 poles + ⊕	186
CQ 7 poles + ⊕	187
CQ 12 poles + ⊕	189
CQ 21 poles	190
CLK 04 SC	239
CX 1/2 BD	243
CXL 2/4 PF, CXL 2/4 PFH	251
CXL 2/4 PM, CXL 2/4 PMH	251
CXL PF, CXL PM	251

hood**description**

part No.
(entry M25)

with lever, top entry **MK VG25** (light grey RAL 7035)

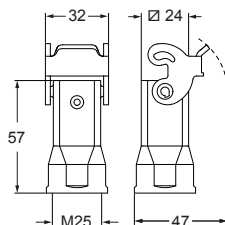
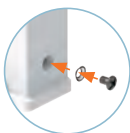
gasket and screw kit for IP66/IP67/IP69 1) **CKR 65**

gasket and screw kit for IP66/IP67/IP69 1)
specific for CD 07/08 inserts **CKR 65 D**

1) To obtain the IP66/IP67/IP69 degree of protection it is necessary to replace the fixing screw supplied with all inserts, with the one with gasket included in the kit (to be purchased separately) **except for** the inserts listed below (already supplied with a fixing screw with gasket):

- CQF/M 07, CQF/M 12
- CX 1/2 BDF/M
- CLK 04 SCF /SCF-H /SCM
- CXL 2/4 PF /PM /PFH /PMH, CXL PF/PM

NOTE: The enclosure shown here is an example. The screw and sealing gasket kit can be used with all enclosures' part nos. in this page



CAVUS

Type 12
Type 4/4X only
with CKR 65 (D)



IP66/IP67/IP69 with CKR 65 (D) 1)



MK standard insulating version

inserts	page:
CK 3 and 4 poles + ⊕	58
CKS 3 and 4 poles + ⊕	-
CKSH 3 and 4 poles + ⊕	63
CD 7 poles + ⊕	66
CD 8 poles	67
CQ4 2 poles + ⊕	182
CQ4 H 2 poles + ⊕	183
CQ4 3 poles + ⊕	184
CQ 5 poles + ⊕	186
CQ 7 poles + ⊕	187
CQ 12 poles + ⊕	189
CQ 21 poles	190
CLK 04 SC	239
CX 1/2 BD	243
CXL 2/4 PF, CXL 2/4 PFH	251
CXL 2/4 PM, CXL 2/4 PMH	251
CXL PF, CXL PM	251

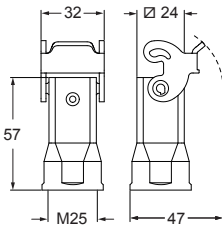
hood



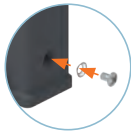
description	part No. (entry M25)
with lever, top entry	MK VGN25 (jet black RAL 9005)
gasket and screw kit for IP66/IP67/IP69 1)	CKR 65
gasket and screw kit for IP66/IP67/IP69 1) specific for CD 07/08 inserts	CKR 65 D

1) To obtain the IP66/IP67/IP69 degree of protection it is necessary to replace the fixing screw supplied with all inserts, with the one with gasket included in the kit (to be purchased separately) **except for** the inserts listed below (already supplied with a fixing screw with gasket):

- CQF/M 07, CQF/M 12
- CX 1/2 BDF/M
- CLK 04 SCF /SCF-H /SCM
- CXL 2/4 PF /PM /PFH /PMH, CXL PF/PM



NOTE: The enclosure shown here is an example. The screw and sealing gasket kit can be used with all enclosures' part nos. in this page



Type 12
Type 4/4X only
with CKR 65 (D)



IP66/IP67/IP69 with CKR 65 (D) 1)



CKX standard insulating version

inserts		page:
CK	3 poles + ⊕	58
CK	4 poles + ⊕	58
CKS	3 poles + ⊕	-
CKS	4 poles + ⊕	-
CKSH	3 poles + ⊕	63
CKSH	4 poles + ⊕	63
CD	7 poles + ⊕	66
CD	8 poles	67
CQ4	2 poles + ⊕	182
CQ4 H	2 poles + ⊕	183
CQ4	3 poles + ⊕	184
CQ	5 poles + ⊕	186
CQ	7 poles + ⊕	187
CQ	12 poles + ⊕	189
CQ	21 poles	190

only for I (straight) housings (if the counterpart has glued gasket):

CJ KF	223
CJK 8FT	226
CJK 8IFT	226, 228
CUK 2FT	236
CUK 3FT	236
CLK 04 SC	239
CX 1/2 BD	243
CXL 2/4 SF, CXL 2/4 SM	250
CXL SF, CXL SM	250

bulkhead mounting housings



angled bulkhead mounting housings



description

part No.

part No.
(entry Pg 11)

with stainless steel lever
with stainless steel lever

CKX 03 I (light grey RAL 7035)
CKX 03 IN (jet black RAL 9005)

without cable entry, with stainless steel lever ¹⁾

CKX 03 IA

with cable entry and stainless steel lever, with cable gland ¹⁾

CKX 03 IAP

with cable entry and stainless steel lever, without cable gland ¹⁾

CKX 03 IAPS

gasket and screw kit
for IP66/IP67/IP69 ²⁾

CKR 65

CKR 65

gasket and screw kit for IP66/IP67/IP69 ²⁾
specific for CD 07/08 inserts

CKR 65 D

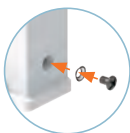
CKR 65 D

¹⁾ Not suitable for CQ4 series inserts

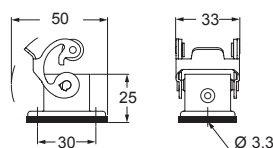
²⁾ To obtain the IP66/IP67/IP69 degree of protection it is necessary to replace the fixing screw supplied with all inserts, with the one with gasket included in the kit (to be purchased separately) **except for** the inserts listed below (already supplied with a fixing screw with gasket):

- CQF/M 07, CQF/M 12
- CJ KF
- CJK 8FT /8IFT
- CUK 2FT /3FT
- CX 1/2 BDF/M
- CLK 04 SCF /SCF-H /SCM
- CXL 2/4 SF /SM, CXL SF/M

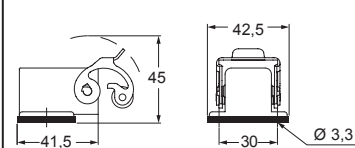
NOTE: The enclosure shown here is an example. The screw and sealing gasket kit can be used with all enclosures' part nos. in this page



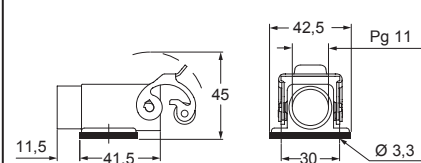
CKX I - CKX IN



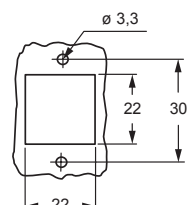
CKX IA



CKX IAP - CKX IAPS



panel cut-out for enclosures



CE
UL
US

Type 12
Type 4/4X only
with CKR 65 (D)



IP66/IP67/IP69 with CKR 65 (D) ²⁾



CKX standard insulating version

inserts		page:
CK	3 poles + ⊕	58
CK	4 poles + ⊕	58
CKS	3 poles + ⊕	-
CKS	4 poles + ⊕	-
CKSH	3 poles + ⊕	63
CKSH	4 poles + ⊕	63
CD	7 poles + ⊕	66
CD	8 poles	67
CQ	5 poles + ⊕	186
CQ	7 poles + ⊕	187
CQ	12 poles + ⊕	189
CQ	21 poles	190

hoods



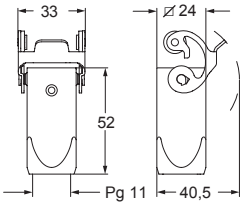
description	part No. (entry Pg 11)
with stainless steel lever, top entry with cable gland	CKX 03 VG
with stainless steel lever, top entry without cable gland	CKX 03 VGS
gasket and screw kit for IP66/IP67/IP69 1)	
	CKR 65
gasket and screw kit for IP66/IP67/IP69 1) specific for CD 07/08 inserts	
	CKR 65 D

1) To obtain the IP66/IP67/IP69 degree of protection it is necessary to replace the fixing screw supplied with all inserts, with the one with gasket included in the kit (to be purchased separately) **except for** the inserts listed below (already supplied with a fixing screw with gasket):
- CQF/M 07, CQF/M 12

NOTE: The enclosure shown here is an example.
The screw and sealing gasket kit can be used with all enclosures' part nos. in this page



CKX VG - CKX VGS



Type 12
Type 4/4X only
with CKR 65 (D)



IP66/IP67/IP69 with CKR 65 (D) 1)

CK standard insulating version DESINA®▲

inserts	page:
CJ KF	223
CJK 8FT	226
CJK 8IFT	228
CUK 2FT	236
CUK 3FT	236
CLK 04 SC	239
CX 1/2 BD	243
CXL 2/4 SF	250
CXL 2/4 SM	250
CXL SF	250
CXL SM	250

bulkhead mounting housings



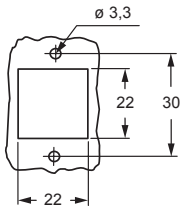
cover



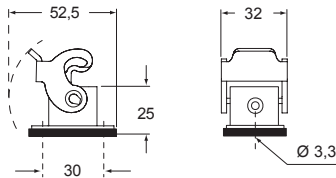
description	part No.	part No.
with lever	CK 03 I (light grey RAL 7035)	
with lever	CK 03 IN (jet black RAL 9005)	
with pegs and glued gasket		CKG 03 C (light grey RAL 7035)
with pegs and glued gasket		CKG 03 CN (jet black RAL 9005)

▲ suitable for DESINA® CXL inserts and CJ, CUK, CLK, CX BD adapters for male inserts without gasket

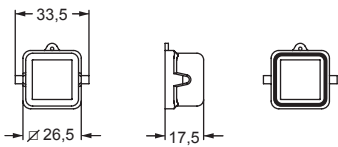
panel cut-out for enclosures



CK I - CK IN



CKG C - CKG CN



CALUS Type 4/4X/12





inserts	page:
CJ KM	223
CJK 8MT	226
CJK 8IMT *	226, 228
CUK 2FT	236
CUK 3FT	236
CLK 04 SC *	239
CX 1/2 BD	243
CXL 2/4 PF	251
CXL 2/4 PFH	251
CXL 2/4 PM	251
CXL 2/4 PMH	251
CXL PF	251
CXL PM	251

* cannot be used with angled enclosures
(part No. CKG 03 VA / MKG VA20)

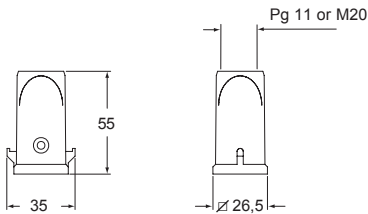
hoods
with glued gasket



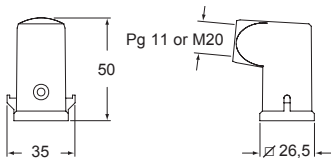
description	part No. (entry Pg 11)	part No. (entry M20)
with pegs and glued gasket, top entry	CKG 03 V (light grey RAL 7035)	MKG V20 (light grey RAL 7035)
with pegs and glued gasket, side entry	CKG 03 VA (light grey RAL 7035)	MKG VA20 (light grey RAL 7035)
with pegs and glued gasket, top entry	CKG 03 VN (jet black RAL 9005)	MKG VN20 (jet black RAL 9005)
with pegs and glued gasket, side entry	CKG 03 VAN (jet black RAL 9005)	MKG VAN20 (jet black RAL 9005)

▲ suitable for DESINA® CXL inserts and CJ, CUK, CLK,
CX BD adapters for male inserts without gasket

CKG V - CKG VN and MKG V - MKG VN



CKG VA - CKG VAN and MKG VA - MKG VAN



CALUS Type
4/4X/12



MKG standard insulating version with glued gasket DESINA®▲

inserts	page:
CJ KM	223
CJK 8MT	226
CJK 8IMT	226, 228
CJK 8M	233
CUK 2FT	236
CUK 3FT	236
CLK 04 SC	239
CX 1/2 BD	243
CXL 2/4 PF	251
CXL 2/4 PFH	251
CXL 2/4 PM	251
CXL 2/4 PMH	251
CXL PF	251
CXL PM	251

hood
with glued gasket



hood
with glued gasket



description

part No.
(entry M25)

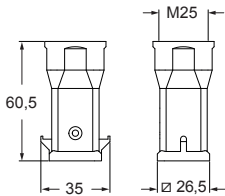
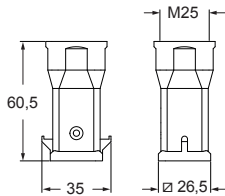
part No.
(entry M25)

with pegs and glued gasket, top entry
with pegs and glued gasket, top entry

MKG V25 (light grey RAL 7035)

MKG VN25 (jet black RAL 9005)

▲ suitable for DESINA® CXL inserts and CJ, CUK, CLK, CX BD adapters for male inserts without gasket



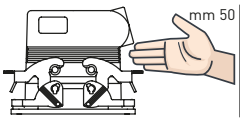
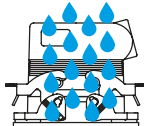
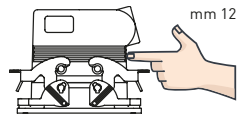
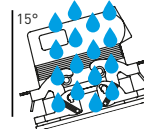
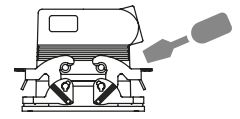
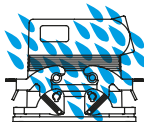
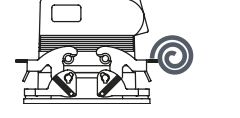
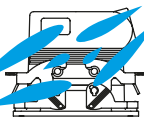
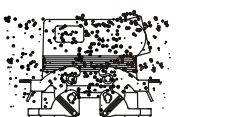
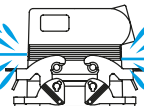
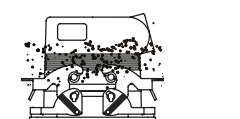
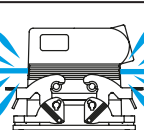
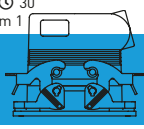
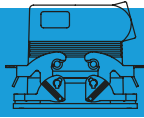
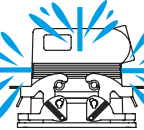
CALUS Type 4/4X/12



THE DEGREE OF PROTECTION

The connector's housing, sealing and locking mechanism protect the connection from external influences such as mechanical shocks, foreign bodies, humidity, dust, water or other fluids such as cleansing and cooling agents, oils, etc. The degree of protection the housing offers is explained in the IEC 60529, DIN EN 60529, standards that categorize enclosures according to foreign body and water protection.

The following table shows the **IP (Ingress Protection) Ratings Guide**.

FIRST Index figure	Degree of protection SOLIDS		SECOND Index figure	Degree of protection WATER	
0		No protection	0		No protection
1		Protected against access to hazardous parts with the back of a hand and protected against solid foreign objects of Ø 50 mm and greater	1		Protected against vertically falling water drops
2		Protected against access to hazardous parts with a finger - protected against solid foreign objects of Ø 12,5 mm and greater	2		Protected against vertically falling water drops when enclosure tilted up to 15° (on either side of the vertical)
3		Protected against access to hazardous parts with a tool - protected against solid foreign objects of Ø 2,5 mm and greater	3		Protected against spraying water (at an angle up to 60° on either side of the vertical)
4		Protected against access to hazardous parts with a wire - protected against solid foreign objects of Ø 1,0 mm and greater	4		Protected against splashing water from any direction
5		Protected against access to hazardous parts with a wire dust-protected (no harmful dust deposit)	5		Protected against water jets from any direction
6		Protected against access to hazardous parts with a wire dust-tight (total protection against dust)	6		Protected against powerful water jets from any direction (similar to sea waves)
RATING EXAMPLE IP 6 5			7		Protected against the effects of temporary immersion in water at a maximum depth of 1 metre for 30 min
			8		Protected against the effects of continuous immersion in water at depth and/or duration upon agreement, more severe than for numeral 7
			9		Protected against high pressure and temperature water jets from any direction

Description according to IEC 60529

CHANGEOVER FROM PG THREADS TO METRIC

After 31st December 1999, the German safety standard DIN VDE 0619 (1987-09) and the standards it refers to - DIN 46319 for dimensions with metric threads and DIN 46320 (T1-T4), DIN 46255 and DIN 46259 for dimensions with Pg threads (Pg = Panzerrohr-Gewinde: literally "threads for armoured pipes") - were withdrawn and European standard EN 50262 "Metric cable glands for electrical installations" has been in force since 1st January 2000.

This standard defines the new sizes with metric threads for cable glands according to EN 60423 and establishes the safety prescriptions.

Conversely, it does not specify the dimensions, such as the size of the tightening wrench, the diagonal dimension, or the dimensions of the tightness seals, as was the case in the withdrawn DIN for Pg cable glands.

The standard came definitively into force on 1st April 2001, when the contrasting national standards were withdrawn.

It is valid in all member countries of CENELEC (European Electrical Standardisation Committee) and its publication has led to a broadening of the supply of enclosures for multi-pole connectors for industrial use, to include new enclosure versions with cable entry suitable for metric cable glands.

NOTE – In 2016 the new EN 62444:2013 standard "Cable glands for electrical installations" replaced the former to cover only cable gland with metric thread whose range is now M6 through M110 (previously up to M75).

Cable gland producers have introduced the new metric series to add to the Pg size series, to gradually replace the latter type. The transitional period indicated in the new standard should have ended on 1st March 2001, after which date the use of cable entry devices with Pg thread and, as a result, enclosures with Pg thread, should have ended in new installations. Nevertheless, both the cable entry devices and the relevant enclosures with Pg thread, may continue to be used as spare parts. For the mandatory **CE** marking of these items, observance of the safety conditions specified by the Low Voltage Directive is sufficient, however adherence to the safety requirements of EN 62444 provides presumption of conformity.

To distinguish hoods and surface-mounting housings with metric entries from the relevant Pg versions (identified with a C pre-code), the ILME metric types are identified with an M pre-code. The transposition table below indicates the correspondence rule adopted in most cases by ILME for creating the new metric versions.

Pg → metric transposition table

Pg	Metric
Pg 11	M20
Pg 13.5	M20
Pg 16	M20
Pg 21	M25
Pg 29	M32
Pg 36	M40
Pg 42	M50

Cable diameter for use with ILME cable glands

Ø in mm	Metric thread				
Series	20	25	32	40	50
AS M..P	6 - 12,5	10 - 18	14 - 24	15 - 24	23 - 30
AS M..E	8 - 12,5	13,5 - 18	17 - 24	—	—
AG M..T	6 - 8 - 10	11 - 14 - 17	19 - 21 - 24	26 - 29 - 32	35 - 38 - 41
AG M..I	5 - 12,5	9 - 18	14 - 25	18 - 32	24 - 38,5
AG M..R	6 - 8 - 10	11 - 14 - 17	19 - 21 - 24	—	—

For more information, please refer to the technical catalogue on www.ilme.com