

Part number

# JMPAP 24.232



Surface mounting housing, JEI®-P series, with 2 levers, M32 x 2 cable entry, size "104.27", high construction

## Product description

<b>Product type</b>	Surface mounting housing
<b>Series</b>	JEI®-P
<b>Closing type</b>	With 2 levers
<b>Size</b>	Size "104.27"
<b>Cable entry</b>	With cable entry M32 x 2
<b>Specification</b>	High construction

## Technical data

<b>IP degree of protection</b>	IP65
--------------------------------	------

## Further technical details

<b>Operating temperature range (min, max)</b>	-40°C...+125°C
---	----------------

## Material properties

<b>Other materials</b>	Lever: Polyamide (PA) Gasket: NBR
<b>Colour</b>	RAL 7040 grey

## Approvals / Standards

<b>Certifications</b>	DNV, BV
-----------------------	---------

## General ordering information

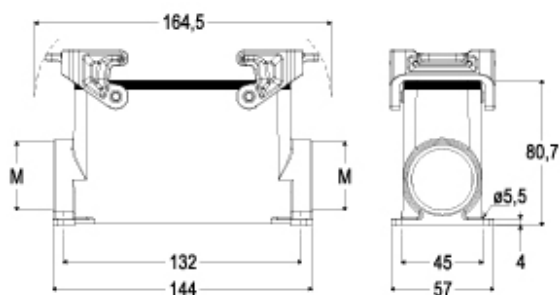
<b>EAN13 code</b>	8015747219082
-------------------	---------------

Part number

# JMPAP 24.232



## Catalogue drawings



---

## Notes