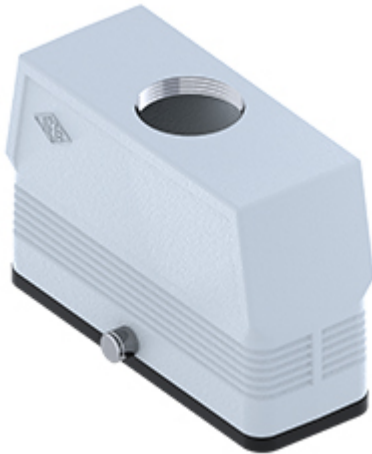


Part number

# CFV 24 GYC29



Hood, CENTRAL LEVER series, with 2 pegs,  
Pg29 top cable entry without adapter, size  
"104.27", high construction

#### Product description

Product type	Hood
Series	CENTRAL LEVER
Closing type	With 2 pegs
Size	Size "104.27"
Cable entry	Top cable entry Pg29
Specification	High construction

#### Technical data

IP degree of protection	IP65
-------------------------	------

#### Further technical details

Operating temperature range (min, max)	-40°C...+125°C
---	----------------

#### Material properties

Colour	RAL 7040 grey
RoHs conformity	Compliant
China RoHs - EFUP	E
REACH SVHC substances	No

#### Approvals / Standards

UL	ECBT2
cUL	ECBT8

#### General ordering information

EAN13 code	8015747267151
------------	---------------

Part number

# CFV 24 GYC29



Catalogue drawings

