

Part number

TMAP 24.40B



Surface mounting housing, T-TYPE series, with 2 levers, M40 cable entry, size "104.27", with integrated protective PE jumpers

| Product description | |
|---|---------------------------------------|
| Product type | Surface mounting housing |
| Series | T-TYPE |
| Closing type | With 2 levers |
| Size | Size 104.27 |
| Cable entry | With cable entry M40 |
| Specification | With integrated protective PE jumpers |
| Technical data | |
| IP degree of protection | IP65 |
| Further technical details | |
| Weight | 0,50 g |
| Operating temperature range (min, max) | -40°C ... +90°C |

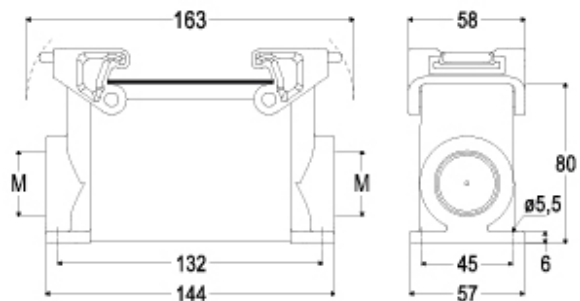
| Material properties | |
|----------------------------------|---|
| Main material | Polypropylene (PP) |
| Other materials | Lever: Polyamide (PA) Gasket: polyurethane (PUR) PE jumpers: galvanized brass |
| Colour | RAL 7012 grey, RAL 7001 grey |
| RoHs conformity | Compliant |
| China RoHs - EFUP | E |
| REACH SVHC substances | No |
| Approvals / Standards | |
| UL | ECBT2 |
| cUL | ECBT8 |
| General ordering information | |
| EAN13 code | 8015747277358 |
| eCl@ss 8.1 | 27440202 |
| ETIM 7.0 | EC000437 |
| Packaging Information | |
| Packaging length | 330,00 mm |
| Packaging height | 220,00 mm |
| Packaging width | 310,00 mm |
| Packaging volume | 22,51 dm ³ |
| Packaging description | Carton box |
| Packaging quantity | 20 Pcs |
| Packaging EAN code | 8015747301909 |
| Sub-packaging description | Plastic packaging |
| Sub-packaging quantity | 5 Pcs |
| Sub-packaging EAN barcode | 8015747301916 |

Part number

TMAP 24.40B



Catalogue drawings



Notes

Dimensions shown in mm are not binding and may be changed without notice.
