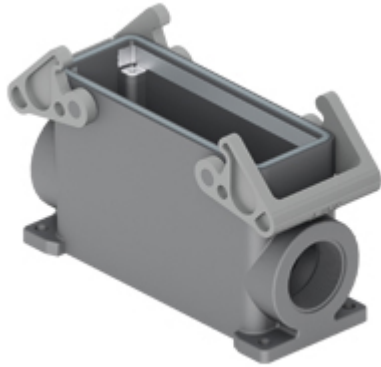


Part number

TAPW24.240B



Surface mounting housing, T-TYPE /W series, with 2 levers, M40 x 2 cable entry, size "104.27", with integrated protective PE jumpers

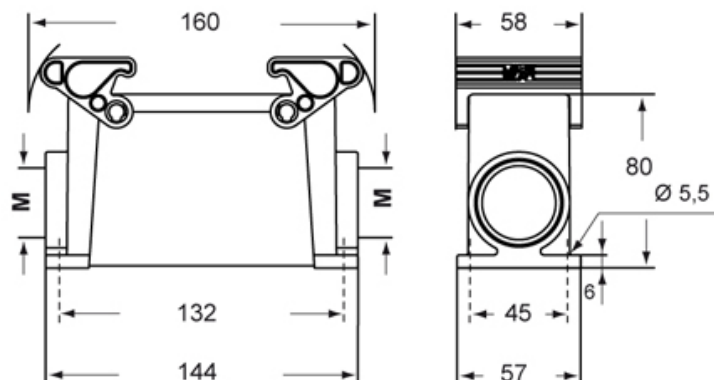
| Product description | | Material properties | |
|--|---------------------------------------|------------------------------|--|
| Product type | Surface mounting housing | Main material | Polypropylene (PP) |
| Series | T-TYPE /W | Other materials | Lever: polyamide (PA) Gasket: FKM PE jumpers: galvanized brass |
| Closing type | With 2 levers | Colour | RAL 7012 grey, RAL 7001 grey |
| Size | Size "104.27" | RoHs conformity | Compliant |
| Cable entry | With cable entry M40 x 2 | China RoHs - EFUP | E |
| Specification | With integrated protective PE jumpers | REACH SVHC substances | No |
| Technical data | | Approvals / Standards | |
| IP degree of protection | IP66 / IP69 | UL | ECBT2 |
| Further technical details | | cUL | ECBT8 |
| Weight | 0,50 g | General ordering information | |
| Operating temperature range (min, max) | -40°C ... +90°C | EAN13 code | 8015747277815 |
| | | Packaging Information | |
| | | Packaging length | 330,00 mm |
| | | Packaging height | 220,00 mm |
| | | Packaging width | 310,00 mm |
| | | Packaging volume | 22,51 dm³ |
| | | Packaging description | Carton box |
| | | Packaging quantity | 20 Pcs |
| | | Packaging EAN code | 8015747300551 |
| | | Sub-packaging description | Plastic packaging |
| | | Sub-packaging quantity | 5 Pcs |
| | | Sub-packaging EAN barcode | 8015747300568 |

Part number

TAPW24.240B



Catalogue drawings



Notes

Dimensions shown in mm are not binding and may be changed without notice.