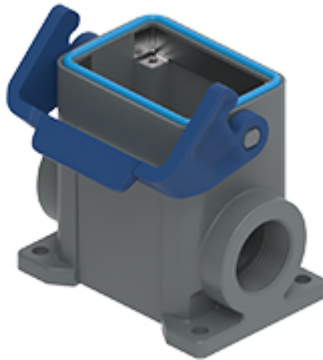


Part number

# TAPH06L232B



Surface mounting housing, T-TYPE /H series, with 1 lever, M32 x 2 cable entry, size "44.27", with integrated protective PE jumpers

#### Product description

<b>Product type</b>	Surface mounting housing
<b>Series</b>	T-TYPE /H
<b>Closing type</b>	With 1 lever
<b>Size</b>	Size 44.27
<b>Cable entry</b>	With cable entry M32 x 2
<b>Specification</b>	With integrated protective PE jumpers

#### Technical data

**IP degree of protection** IP66 / IP69

#### Further technical details

<b>Weight</b>	0,50 g
<b>Operating temperature range (min, max)</b>	-40°C ... +70°C

#### Material properties

<b>Main material</b>	Polypropylene (PP)
<b>Other materials</b>	Lever: Polypropylene (PP), metal-detectable Gasket: HNBR PE jumpers: galvanized brass
<b>Colour</b>	RAL 7012 grey, RAL 5005 blue
<b>RoHs conformity</b>	Compliant
<b>China RoHs - EFUP</b>	E
<b>REACH SVHC substances</b>	No

#### General ordering information

**EAN13 code** 8015747277976

#### Packaging Information

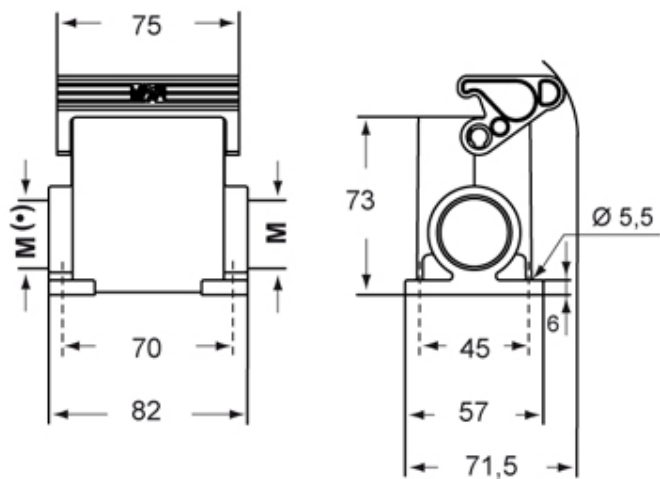
<b>Packaging length</b>	180,00 mm
<b>Packaging height</b>	210,00 mm
<b>Packaging width</b>	330,00 mm
<b>Packaging volume</b>	12,47 dm <sup>3</sup>
<b>Packaging description</b>	Carton box
<b>Packaging quantity</b>	20 Pcs
<b>Packaging EAN code</b>	8015747298872
<b>Sub-packaging description</b>	Plastic packaging
<b>Sub-packaging quantity</b>	5 Pcs
<b>Sub-packaging EAN barcode</b>	8015747298889

Part number

# TAPH06L232B



Catalogue drawings



## Notes

Dimensions shown in mm are not binding and may be changed without notice.