


Part number

PE 1633 PP



Wall-mounting socket outlet, PLUSO series, 2 poles + PE, 3 h (white), 16 A, 50 ÷ 250 V

| Product description | | Material properties | |
|--|---|------------------------------|---|
| Product type | Socket Wall-mounting | Colour | RAL 7035 grey, RAL 9010 white |
| Series | PE...PP, PLUSO | RoHs conformity | Compliant with exemption 6(c): copper alloy containing up to 4% lead by weight |
| N. of poles | 2 poles +  | China RoHs - EFUP | 50 |
| Clock position | 3 | REACH SVHC substances | Yes Lead |
| Technical data | | SCIP number | Ca7de37f-add8-4b77-9861-279c94903ade |
| Current | 16 A | Approvals / Standards | |
| Voltage | > 50 ÷ 250 V | Reference standard | EN 60309-1 and -2 |
| IP degree of protection | IP44 | General ordering information | |
| Further technical details | | EAN13 code | 8015747063531 |
| Weight | 183,00 g | Packaging Information | |
| Operating temperature range (min, max) | -25°C ... +40°C | Packaging length | 208,00 mm |
| | | Packaging height | 140,00 mm |
| | | Packaging width | 290,00 mm |
| | | Packaging weight | 2,06 kg |
| | | Packaging volume | 8,44 dm ³ |
| | | Packaging description | Carton box |
| | | Packaging quantity | 10 Pcs |
| | | Packaging EAN code | 8015747063548 |

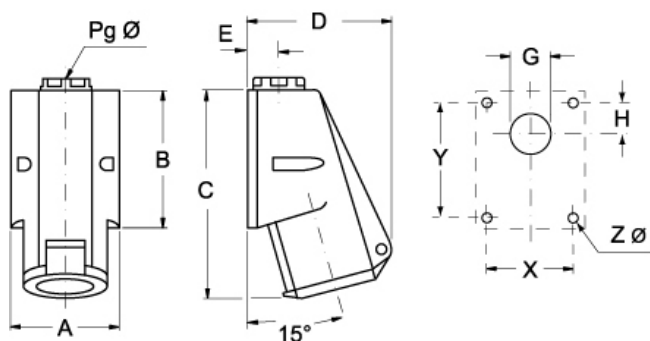
Part number

PE 1633 PP



Catalogue drawings

(16 / 32A) PE ... PP



| PE ... PP | | A | B | C | D | E | G | H | X | Y | Pg | Ø Z | Ø |
|------------|--------|----|-----|-----|-----|----|-----|----|----|----|----|-----|---|
| 16A | 2P+⊕ | 70 | 82 | 126 | 92 | 20 | Ø22 | 16 | 53 | 65 | 16 | 4,5 | |
| | 3P+⊕ | 70 | 82 | 126 | 92 | 20 | Ø22 | 16 | 53 | 65 | 16 | 4,5 | |
| | 3P+N+⊕ | 70 | 82 | 132 | 106 | 20 | Ø22 | 16 | 53 | 65 | 16 | 4,5 | |
| 32A | 2P+⊕ | 86 | 104 | 159 | 110 | 24 | Ø28 | 17 | 61 | 79 | 21 | 6,5 | |
| | 3P+⊕ | 86 | 104 | 159 | 110 | 24 | Ø28 | 17 | 61 | 79 | 21 | 6,5 | |
| | 3P+N+⊕ | 86 | 104 | 159 | 110 | 24 | Ø28 | 17 | 61 | 79 | 21 | 6,5 | |

Notes

Dimensions shown in mm are not binding and may be changed without notice.

- Compliant with EN 60309-1 and -2
- Enclosure, insert and spring lid in insulating, thermoplastic, self-extinguishing material
- RAL 7035 grey enclosure, spring lid colour coded according to the operating voltage
- PE...PP types (IP44), spring lid, entry with threaded grommet (replaceable with a cable gland)
- PEW...PP types (IP67), spring lid with locking ring and gasket, entry with cable gland
- Terminals with retained screws
- 63A, 125A: with pilot contact
- Nickel-plated contacts, available on request for 16A and 32A (standard on 63A and 125A). For the code of products with nickel-plated contacts (socket holes, plug pins), add "N" to the pre-code of the corresponding standard product code; for example: PE becomes PEN and PEW becomes PEWN.
- 125A: with terminal block for the anchoring of incoming cables, already connected to socket
- IP44 and IP67 degrees of protection (EN 60529)