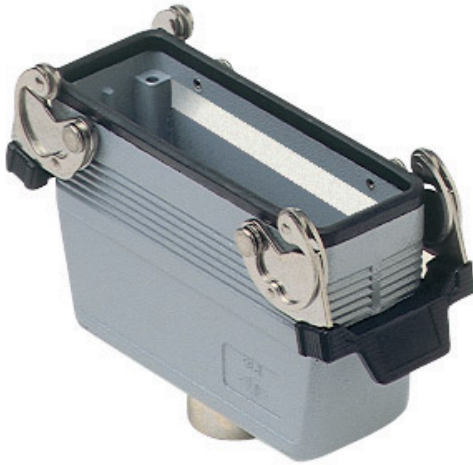


Part number

# MMAV 16 LG25



Hood, 830V series, with 1 lever, M25 top cable entry, size "104.27", high construction

<b>Product description</b>		<b>Material properties</b>	
<b>Product type</b>	Hood	<b>Colour</b>	RAL 7040 grey
<b>Series</b>	830V	<b>RoHs conformity</b>	Compliant
<b>Closing type</b>	With 1 lever	<b>China RoHs - EFUP</b>	E
<b>Size</b>	Size 104.27	<b>REACH SVHC substances</b>	No
<b>Cable entry</b>	Top cable entry M25	<b>Approvals / Standards</b>	
<b>Specification</b>	High construction	<b>Certifications</b>	DNV, BV
<b>Technical data</b>		<b>UL</b>	ECBT2
<b>IP degree of protection</b>	IP65 / IP66 / IP69	<b>cUL</b>	ECBT8
<b>Further technical details</b>		<b>General ordering information</b>	
<b>Weight</b>	356,00 g	<b>EAN13 code</b>	8015747058155
<b>Operating temperature range (min, max)</b>	-40°C...+125°C	<b>Packaging Information</b>	
		<b>Sub-packaging weight</b>	1,78 kg
		<b>Sub-packaging description</b>	Plastic packaging
		<b>Sub-packaging quantity</b>	5 Pcs
		<b>Sub-packaging EAN barcode</b>	8015747107792

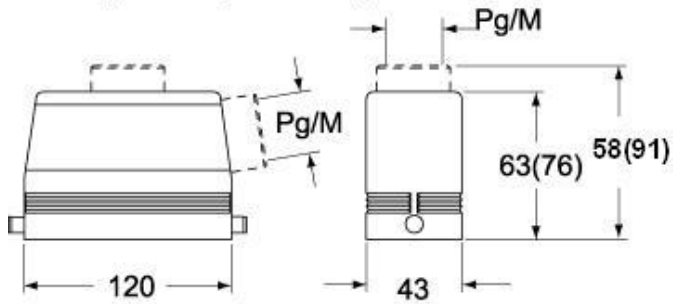
Part number

# MMAV 16 LG25

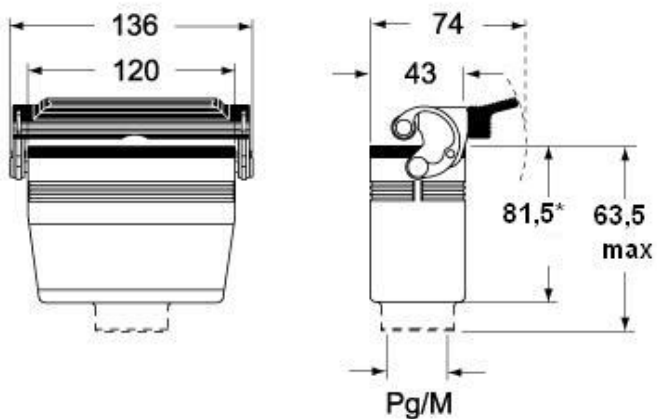


## Catalogue drawings

**CMO L (CMAO L) - MMO L [MMAO L]  
CMV L [CMAV L] - MMV L (MMAV L)**



**CMV LG (CMAV LG) - MMV LG (MMAV LG)  
[MMFV LG]**



## Notes

Dimensions shown in mm are not binding and may be changed without notice.