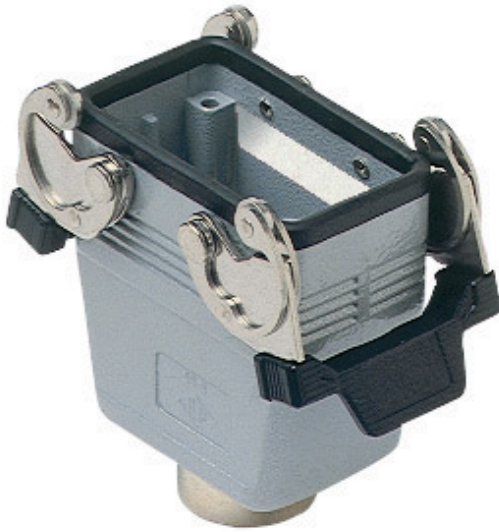


Part number

MMAV 03 G25



Hood, 830V series, with 2 levers, M25 top cable entry, size "57.27", high construction

Product description

Product type	Hood
Series	830V
Closing type	With 2 levers
Size	Size 57.27
Cable entry	Top cable entry M25
Specification	High construction

Technical data

IP degree of protection IP65 / IP66 / IP69

Further technical details

Weight	296,00 g
Operating temperature range (min, max)	-40°C...+125°C

Material properties

Colour	RAL 7040 grey
RoHs conformity	Compliant
China RoHs - EFUP	E
REACH SVHC substances	No

Approvals / Standards

Certifications	DNV, BV
UL	ECBT2
cUL	ECBT8

General ordering information

EAN13 code 8015747057899

Packaging Information

Sub-packaging weight	1,48 kg
Sub-packaging description	Plastic packaging
Sub-packaging quantity	5 Pcs
Sub-packaging EAN barcode	8015747106689

Part number

MMAV 03 G25



Notes

Dimensions shown in mm are not binding and may be changed without notice.
