

Part number

MHPXW 50.32



Surface mounting housing, W-TYPE series,
with 2 levers, M32 cable entry, size "66.40"

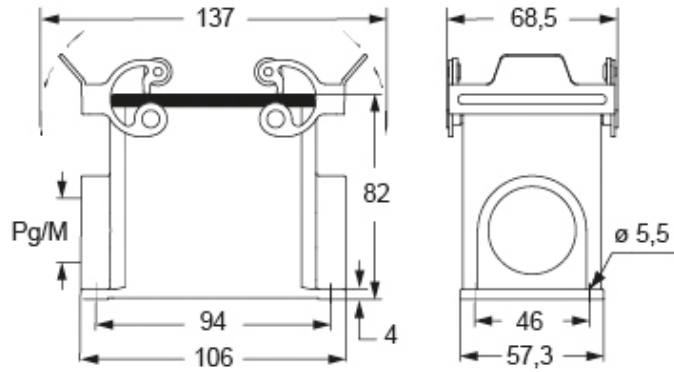
Product description		Material properties	
Product type	Surface mounting housing	Colour	RAL 9005 black
Series	W-TYPE	RoHs conformity	Compliant
Closing type	With 2 levers	China RoHs - EFUP	E
Size	Size "66.40"	REACH SVHC substances	No
Cable entry	With cable entry M32	Approvals / Standards	
Technical data		Certifications	DNV, BV
IP degree of protection	IP65 / IP66 / IP69	UL	ECBT2
Further technical details		cUL	ECBT8
Operating temperature range (min, max)		General ordering information	
-40°C...+125°C		EAN13 code	8015747276436
		eCl@ss 8.1	27440202
		ETIM 7.0	EC000437

Part number

MHPXW 50.32



Catalogue drawings



Notes

Dimensions shown in mm are not binding and may be changed without notice.