

Part number

MHP 16 CP25



Surface mounting housing, C-TYPE series, with 4 pegs, M25 cable entry, size "77.27", with plastic cover

Product description		Material properties	
Product type	Surface mounting housing	Other materials	Gasket: NBR
Series	C-TYPE	Colour	RAL 7040 grey
Closing type	With 4 pegs	RoHs conformity	Compliant
Size	Size 77.27	China RoHs - EFUP	E
Cable entry	With cable entry M25	REACH SVHC substances	No
Specification	With plastic cover	Approvals / Standards	
Technical data		Certifications	DNV, BV
IP degree of protection	IP65	UL	ECBT2
Further technical details		cUL	ECBT8
Weight	296,00 g	General ordering information	
Operating temperature range (min, max)	-40°C...+125°C	EAN13 code	8015747054409
		eCl@ss 8.1	27440202
		ETIM 7.0	EC000437
Packaging Information			
		Packaging length	350,00 mm
		Packaging height	160,00 mm
		Packaging width	165,00 mm
		Packaging weight	3,34 kg
		Packaging volume	9,24 dm³
		Packaging description	Carton box
		Packaging quantity	10 Pcs
		Packaging EAN code	8015747229012
		Sub-packaging weight	1,67 kg
		Sub-packaging description	Plastic packaging
		Sub-packaging quantity	5 Pcs
		Sub-packaging EAN barcode	8015747099608

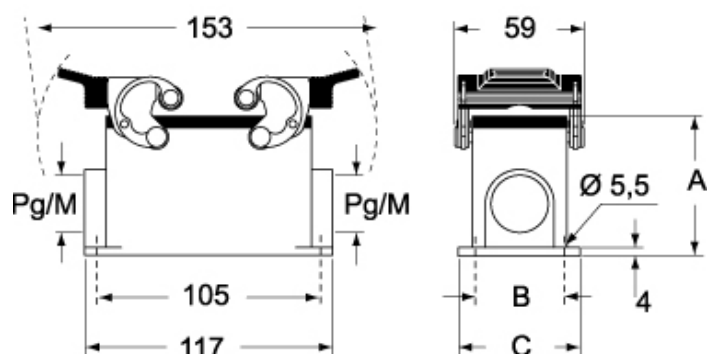
Part number

MHP 16 CP25

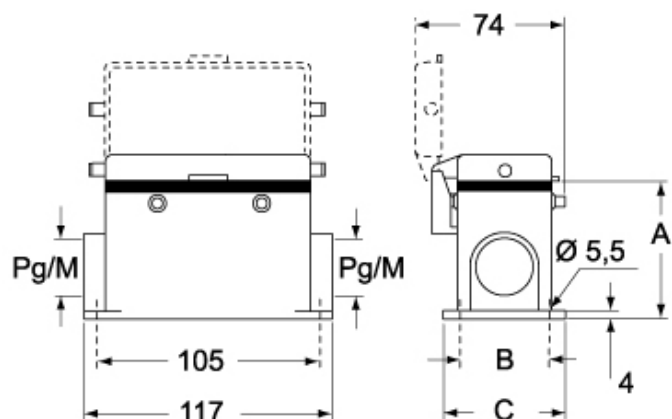


Catalogue drawings

CHP CAP - MHP MAP



CHP CS/CP CAP CS/CP - MHP CS/CP MAP CS/CP



	A
CHP / MHP	63
CAP / MAP	77
CHP CS / MHP CS	63
CAP CS / MAP CS	77
CHP CP / MHP CP	63
CAP CP / MAP CP	77

Notes

Dimensions shown in mm are not binding and may be changed without notice.