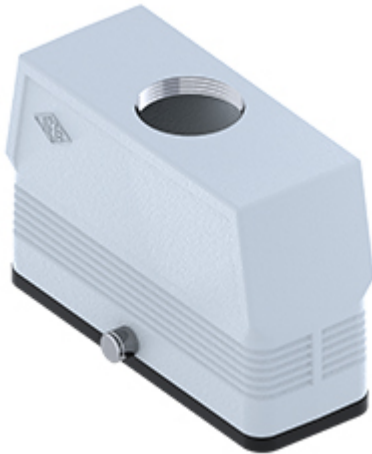


Part number

MFV 24 GYC40



Hood, CENTRAL LEVER series, with 2 pegs,
M40 top cable entry without adapter, size
"104.27", high construction

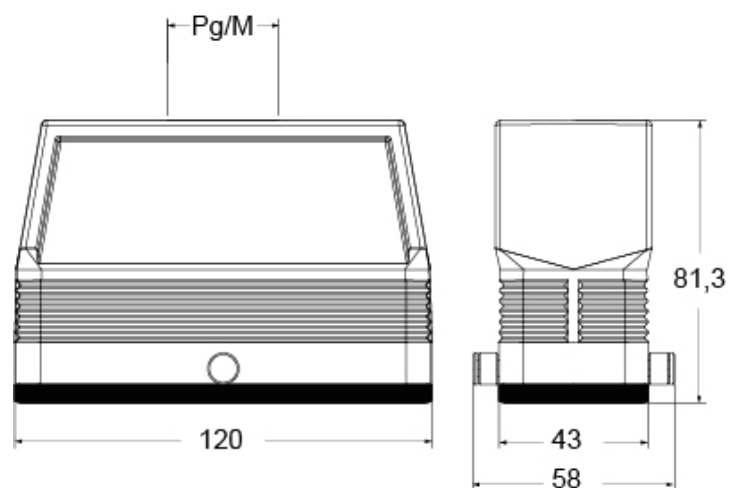
Product description		Material properties	
Product type	Hood	Colour	RAL 7040 grey
Series	CENTRAL LEVER	RoHs conformity	Compliant
Closing type	With 2 pegs	China RoHs - EFUP	E
Size	Size "104.27"	REACH SVHC substances	No
Cable entry	Top cable entry M40	Approvals / Standards	
Specification	High construction	UL	ECBT2
Technical data		cUL	ECBT8
IP degree of protection	IP65	General ordering information	
Further technical details		EAN13 code	8015747264891
Operating temperature range (min, max)	-40°C...+125°C	eCl@ss 8.1	27440202
		ETIM 7.0	EC000437
Packaging Information			
Sub-packaging description		Plastic packaging	
Sub-packaging quantity		5 Pcs	
Sub-packaging EAN barcode		8015747264907	

Part number

MFV 24 GYC40



Catalogue drawings



Notes

Dimensions shown in mm are not binding and may be changed without notice.