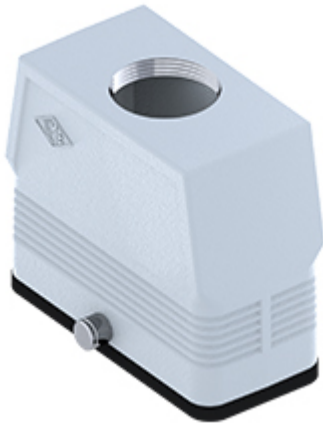


Part number

# MFV 16 GYC25



Hood, CENTRAL LEVER series, with 2 pegs,  
M25 top cable entry without adapter, size  
"77.27", high construction

## Product description

|                      |                        |
|----------------------|------------------------|
| <b>Product type</b>  | Hood                   |
| <b>Series</b>        | CENTRAL LEVER          |
| <b>Closing type</b>  | With 2 pegs            |
| <b>Size</b>          | Size 77.27             |
| <b>Cable entry</b>   | Top cable entry<br>M25 |
| <b>Specification</b> | High construction      |

## Technical data

|                                |      |
|--------------------------------|------|
| <b>IP degree of protection</b> | IP65 |
|--------------------------------|------|

## Further technical details

|   |                |
|---|----------------|
| <b>Operating temperature range (min, max)</b> | -40°C...+125°C |
|---|----------------|

## Material properties

|                              |               |
|------------------------------|---------------|
| <b>Other materials</b>       | Gasket: NBR   |
| <b>Colour</b>                | RAL 7040 grey |
| <b>RoHs conformity</b>       | Compliant     |
| <b>China RoHs - EFUP</b>     | E             |
| <b>REACH SVHC substances</b> | No            |

## Approvals / Standards

|            |       |
|------------|-------|
| <b>UL</b>  | ECBT2 |
| <b>cUL</b> | ECBT8 |

## General ordering information

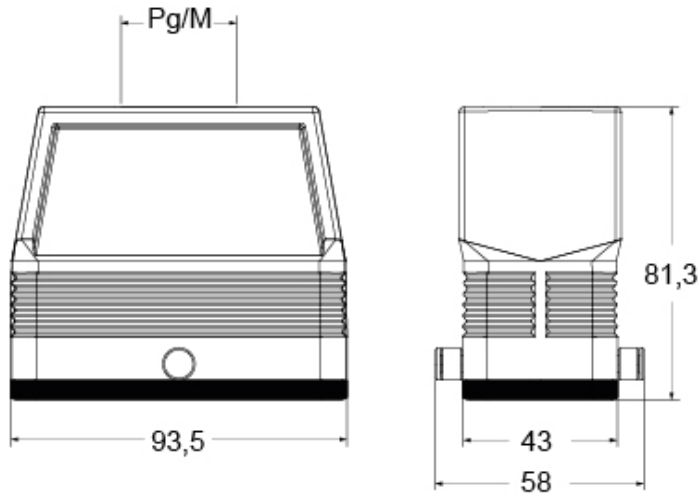
|                   |               |
|-------------------|---------------|
| <b>EAN13 code</b> | 8015747267083 |
| <b>eCl@ss 8.1</b> | 27440202      |
| <b>ETIM 7.0</b>   | EC000437      |

Part number

# MFV 16 GYC25



Catalogue drawings



## Notes

Dimensions shown in mm are not binding and may be changed without notice.