

Part number

MAP 16 CS240



Surface mounting housing, C-TYPE series, with 4 pegs, M40 x 2 cable entry, size "77.27", high construction, with metal cover

Product description		Material properties	
Product type	Surface mounting housing	Colour	RAL 7040 grey
Series	C-TYPE	RoHs conformity	Compliant
Closing type	With 4 pegs	China RoHs - EFUP	E
Size	Size 77.27	REACH SVHC substances	No
Cable entry	With cable entry M40 x 2	Approvals / Standards	
Specification	High construction, with metal cover	Certifications	DNV, BV
Technical data		UL	ECBT2
IP degree of protection	IP65	cUL	ECBT8
Further technical details		General ordering information	
Weight	365,00 g	EAN13 code	8015747051422
Operating temperature range (min, max)	-40°C...+125°C	eCl@ss 8.1	27440202
		ETIM 7.0	EC000437
Packaging Information			
Packaging length	475,00 mm	Packaging height	220,00 mm
Packaging width	175,00 mm	Packaging weight	4,13 kg
Packaging volume	18,29 dm³	Packaging description	Carton box
Packaging quantity	10 Pcs	Packaging EAN code	8015747244664
Sub-packaging weight	2,07 kg	Sub-packaging description	Plastic packaging
Sub-packaging quantity	5 Pcs	Sub-packaging EAN barcode	8015747099462

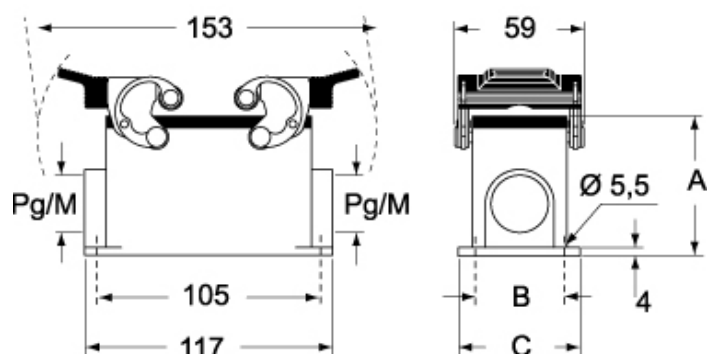
Part number

MAP 16 CS240

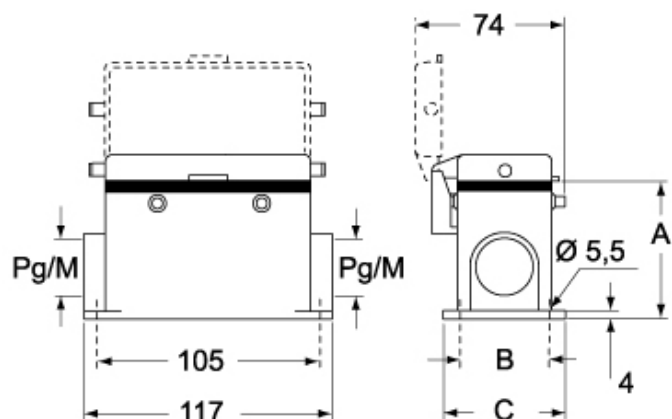


Catalogue drawings

CHP CAP - MHP MAP



CHP CS/CP CAP CS/CP - MHP CS/CP MAP CS/CP



	A
CHP / MHP	63
CAP / MAP	77
CHP CS / MHP CS	63
CAP CS / MAP CS	77
CHP CP / MHP CP	63
CAP CP / MAP CP	77

Notes

Dimensions shown in mm are not binding and may be changed without notice.