

Part number

# JMPAP 24.32



Surface mounting housing, JEl®-P series, with 2 levers, M32 cable entry, size 104.27, high construction

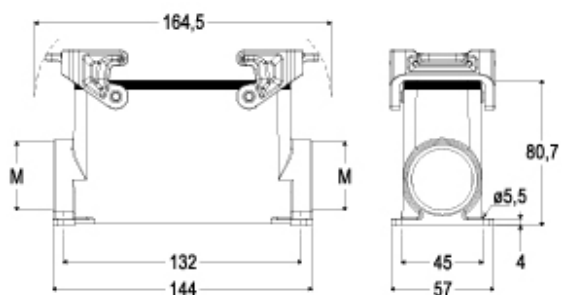
Product description		Material properties	
<b>Product type</b>	Surface mounting housing	<b>Other materials</b>	Lever: Polyamide (PA) Gasket: NBR
<b>Series</b>	JEl®-P	<b>Colour</b>	RAL 7040 grey
<b>Closing type</b>	With 2 levers	<b>Approvals / Standards</b>	
<b>Size</b>	Size 104.27	<b>Certifications</b>	DNV, BV
<b>Cable entry</b>	With cable entry M32	<b>General ordering information</b>	
<b>Specification</b>	High construction	<b>EAN13 code</b>	8015747091633
Technical data		Packaging Information	
<b>IP degree of protection</b>	IP65	<b>Packaging length</b>	475,00 mm
Further technical details		<b>Packaging height</b>	220,00 mm
<b>Weight</b>	438,00 g	<b>Packaging width</b>	200,00 mm
<b>Operating temperature range (min, max)</b>	-40°C...+125°C	<b>Packaging weight</b>	4,68 kg
		<b>Packaging volume</b>	20,90 dm <sup>3</sup>
		<b>Packaging description</b>	Carton box
		<b>Packaging quantity</b>	10 Pcs
		<b>Packaging EAN code</b>	8015747250016
		<b>Sub-packaging weight</b>	2,34 kg
		<b>Sub-packaging description</b>	Plastic packaging
		<b>Sub-packaging quantity</b>	5 Pcs
		<b>Sub-packaging EAN barcode</b>	8015747091640

Part number

# JMPAP 24.32



## Catalogue drawings



## Notes

Dimensions shown in mm are not binding and may be changed without notice.

---