

Part number

# JMPAP 10L232



Surface mounting housing, JEI®-P series, with 1 lever, M32 x 2 cable entry, size 57.27, high construction

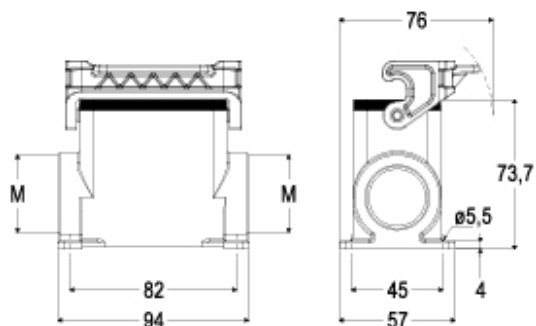
Product description		Material properties	
Product type	Surface mounting housing	Colour	RAL 7040 grey
Series	JEI®-P	Approvals / Standards	
Closing type	With 1 lever	Certifications	DNV, BV
Size	Size 57.27	General ordering information	
Cable entry	With cable entry M32 x 2	EAN13 code	8015747303613
Specification	High construction	Packaging Information	
Technical data		Packaging length	475,00 mm
IP degree of protection	IP65	Packaging height	200,00 mm
Further technical details		Packaging width	150,00 mm
Weight	1,00 g	Packaging volume	14,25 dm³
Operating temperature range (min, max)	-40°C...+125°C	Packaging description	Carton box
		Packaging quantity	10 Pcs
		Packaging EAN code	8015747019248
		Sub-packaging description	Plastic packaging
		Sub-packaging quantity	5 Pcs
		Sub-packaging EAN barcode	8015747020367

Part number

# JMPAP 10L232



## Catalogue drawings



## Notes

Dimensions shown in mm are not binding and may be changed without notice.