

Part number

FM 910 RI



Cover, FM series, reduction for inclined flush-mounting socket-outlets

Product description

Product type	Cover
Series	FM
Size	90 x 100 mm
Specification	Reduction for inclined flush-mounting socket-outlets

Further technical details

Weight	46,50 g
Operating temperature range (min, max)	-40°C ... +125°C

Material properties

Colour	RAL 7035 grey
---------------	---------------

General ordering information

EAN13 code	8015747048026
-------------------	---------------

Packaging Information

Sub-packaging weight	0,05 kg
Sub-packaging description	Plastic packaging
Sub-packaging quantity	1 Pcs
Sub-packaging EAN barcode	8015747048033

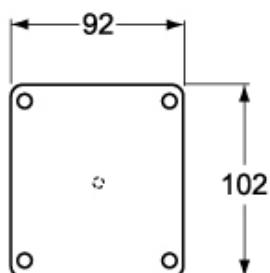
Part number

FM 910 RI

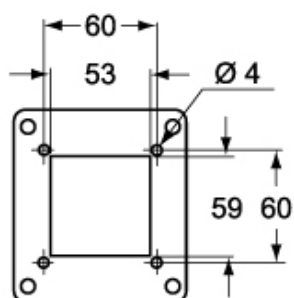


Catalogue drawings

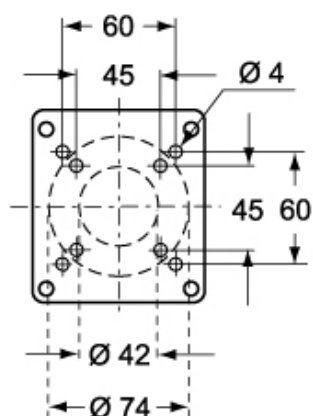
FM 910 CVU



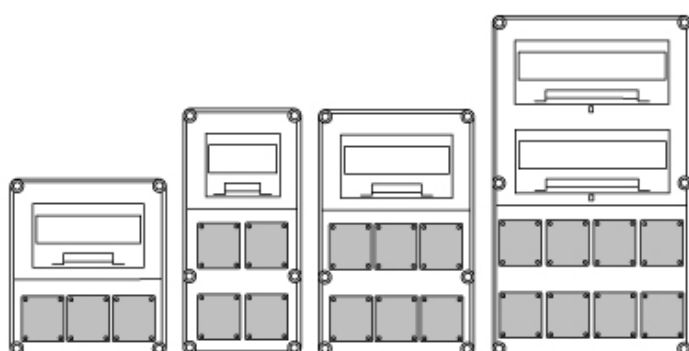
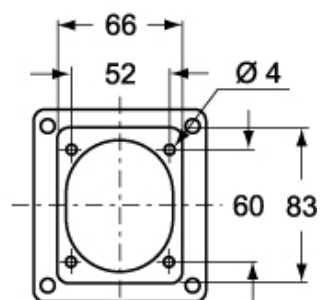
FM 910 RC



FM 910 CV



FM 910 RI



Notes

Dimensions shown in mm are not binding and may be changed without notice.
