

Part number

CYG 8/2 JF



Female RJ45 connector, CYG couplers series, size "21.21", in insulating enclosure, 8 data contacts + 2 power contacts

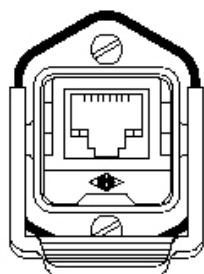
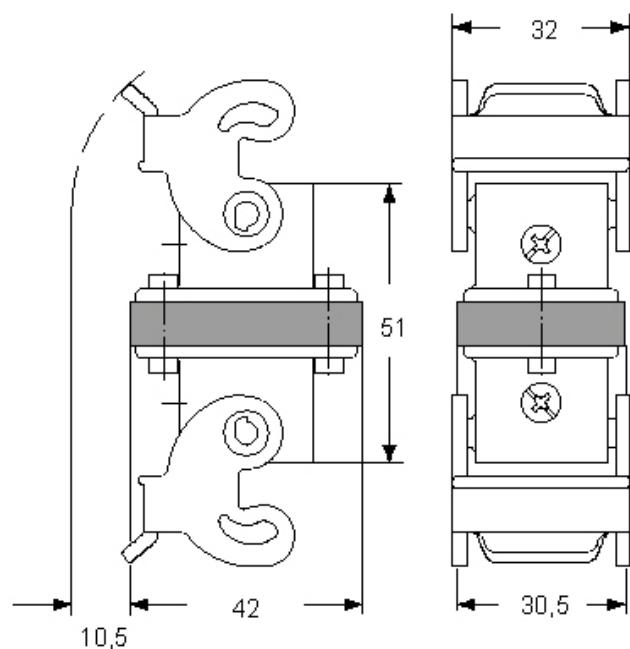
Product description		Material properties	
Product type	Data connector	Colour	RAL 9005 black
Series	CYG couplers		Compliant with exemption
Connection type	RJ45	RoHs conformity	6(c): copper alloy containing up to 4% lead by weight
Gender	Female	China RoHs - EFUP	50
Size	Size "21.21"	REACH SVHC substances	Yes
Specification	In insulating enclosure 8 data contacts + 2 power contacts, Cat.5	Lead	Lead
Further technical details		SCIP number	75d1c3f4-d971-425a-bdda-7a317d67dedb
Weight	50,00 g	General ordering information	
Operating temperature range (min, max)	-40°C ... +120°C	EAN13 code	8015747170376
		eCl@ss 8.1	19170125
		ETIM 7.0	EC002636
		Packaging Information	
		Sub-packaging weight	0,05 kg
		Sub-packaging description	Plastic bag
		Sub-packaging quantity	1 Pcs
		Sub-packaging EAN barcode	8015747170413

Part number

CYG 8/2 JF



Catalogue drawings



Notes

Dimensions shown in mm are not binding and may be changed without notice.