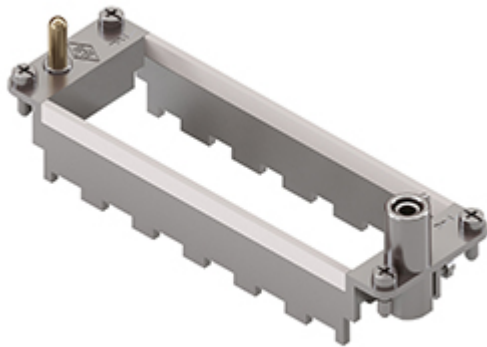


Part number

CX 06 TF



Frame for Mixo inserts, 6 modules, for 6 modular inserts and enclosures size "104.27", frame for housings

| Product description | |
|----------------------------------|--|
| Product type | Frame for Mixo inserts |
| Size | 6 modules |
| Specification | For 6 modular inserts and enclosures size 104.27 Frame for housings |
| Further technical details | |
| Weight | 63,50 g |
| UL 94 flammability rating | V-0 |

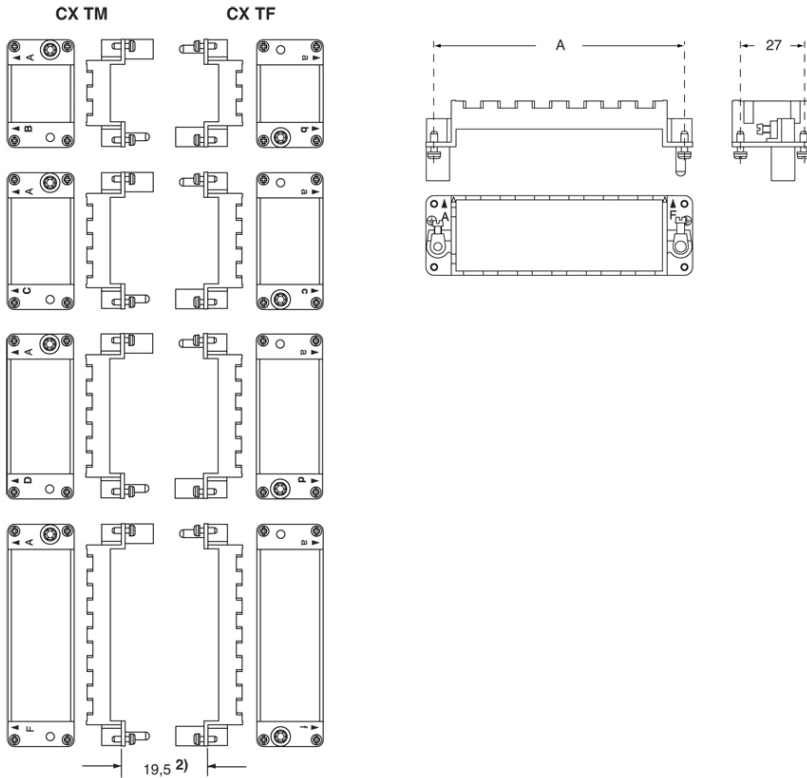
| Material properties | |
|----------------------------------|--|
| RoHs conformity | Compliant with exemption 6(c): copper alloy containing up to 4% lead by weight |
| China RoHs - EFUP | 50 |
| REACH SVHC substances | Yes Lead |
| SCIP number | C0556c52-3b1b-4ffb-87d5-58c9db853c44 |
| Approvals / Standards | |
| UL | ECBT2 |
| cUL | ECBT8 |
| General ordering information | |
| EAN13 code | 8015747041928 |
| eCl@ss 8.1 | 27440210 |
| ETIM 7.0 | EC002310 |
| Packaging Information | |
| Packaging length | 270,00 mm |
| Packaging height | 75,00 mm |
| Packaging width | 180,00 mm |
| Packaging weight | 2,40 kg |
| Packaging volume | 3,65 dm ³ |
| Packaging description | Carton box |
| Packaging quantity | 30 Pcs |
| Packaging EAN code | 8015747041935 |
| Sub-packaging length | 113,00 mm |
| Sub-packaging height | 36,00 mm |
| Sub-packaging width | 180,00 mm |
| Sub-packaging weight | 0,40 kg |
| Sub-packaging volume | 0,73 dm ³ |
| Sub-packaging description | Carton tray |
| Sub-packaging quantity | 5 Pcs |
| Sub-packaging EAN barcode | 8015747041942 |

Part number

CX 06 TF



Catalogue drawings



Notes

Dimensions shown in mm are not binding and may be changed without notice.

California Proposition 65 Information



WARNING

This product can expose you to lead and its compounds, known to the State of California to cause cancer and/or reproductive toxicity. For more information go to www.P65Warnings.ca.gov.