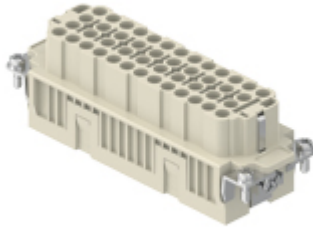



Part number

# CQEF 46 N



Female insert, CQE series, crimp connection, 46 poles + PE (47-92), 16 A 500 V 6 kV 3, size "104.62"

Product description		Material properties	
<b>Product type</b>	Insert	<b>Main material</b>	Polycarbonate (PC)
<b>Series</b>	CQE	<b>Colour</b>	RAL 7032 grey
<b>Connection type</b>	Crimp connection	<b>RoHs conformity</b>	Compliant
<b>Gender</b>	Female	<b>China RoHs - EFUP</b>	E
<b>N. of poles</b>	92 poles + 	<b>REACH SVHC substances</b>	No
<b>Size</b>	Size 104.62	<b>Approvals / Standards</b>	
<b>Technical data</b>		<b>Reference standard</b>	EN 61984:2009-06
<b>Current</b>	16 A	<b>Certifications</b>	CSA, CQC, DNV, BV, EAC
<b>Voltage</b>	500 V	<b>UL</b>	ECBT2
<b>Rated impulse withstand voltage</b>	6 kV	<b>cUL</b>	ECBT8
<b>Pollution degree</b>	3	<b>General ordering information</b>	
<b>Rated voltage according to UL/CSA</b>	600 V	<b>EAN13 code</b>	8015747037143
<b>Pole numbering system</b>	47-92	<b>eCl@ss 8.1</b>	27440205
<b>IP degree of protection</b>	IP20 without enclosure, IP65/IP66 with enclosure	<b>ETIM 7.0</b>	EC000438
<b>Further technical details</b>		<b>Packaging Information</b>	
<b>Characteristics according to EN 61984</b>	16A 500V 6kV 3; 16A 830V 8kV 2	<b>Sub-packaging length</b>	113,00 mm
<b>Mating cycles</b>	≥ 500	<b>Sub-packaging height</b>	36,00 mm
<b>Insulation resistance</b>	≥ 10 GΩ	<b>Sub-packaging width</b>	180,00 mm
<b>Contact resistance</b>	≤ 1 mΩ	<b>Sub-packaging weight</b>	0,44 kg
<b>Weight</b>	88,00 g	<b>Sub-packaging volume</b>	0,73 dm <sup>3</sup>
<b>Operating temperature range (min, max)</b>	-40 °C ... +125 °C	<b>Sub-packaging description</b>	Carton tray
<b>UL 94 flammability rating</b>	V-0	<b>Sub-packaging quantity</b>	5 Pcs
		<b>Sub-packaging EAN barcode</b>	8015747037150

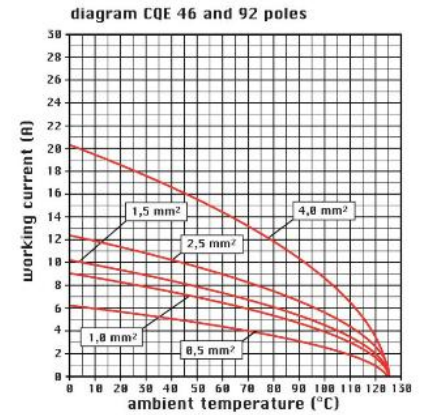
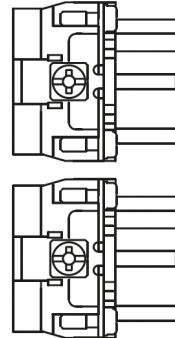
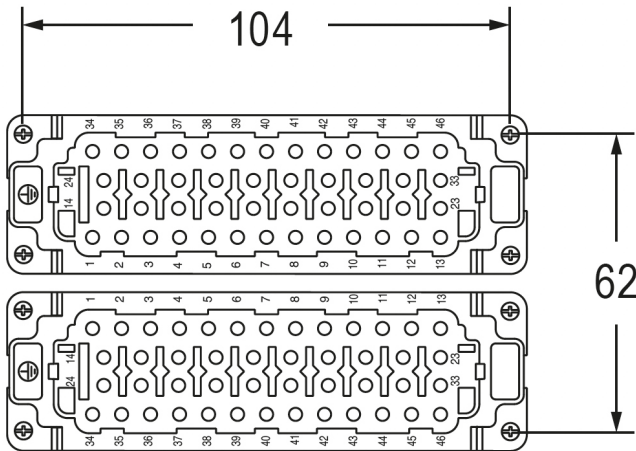
Part number

# CQEF 46 N



Catalogue drawings

Catalogue drawings



## Notes

CQEF/M 46 N inserts:

- characteristics according to EN 61984:  
(16A 500V 6kV 3)  
(16A 830V) 8kV 2)
- rated voltage according to UL/CSA: 600V
- insulation resistance: > 10 GOhm
- ambient temperature limit: -40 °C ... +125 °C
- are made of self-extinguishing thermoplastic resin UL 94 V0
- mechanical life: > 500 cycles
- contact resistance: < 1 mOhm
- for contact crimping instructions, please see the crimping tool section (16A contacts, CCF, CCM and CC...AN series) .
- enclosures: size "104.62":  
C-TYPE IP65/IP66  
C7 IP67 stainless steel lever  
V-TYPE IP65/IP66  
stainless steel lever  
T-TYPE IP65 insulating  
JEI zinc-plated steel lever  
BIG hoods  
W-TYPE aggressive environments  
EMC  
central lever  
IP68  
panel supports: page:COB

### California Proposition 65 Information



### WARNING

This product can expose you to nickel compounds, known to the State of California to cause cancer and/or reproductive toxicity. For more information go to [www.P65Warnings.ca.gov](http://www.P65Warnings.ca.gov).

Dimensions shown in mm are not binding and may be changed without notice.