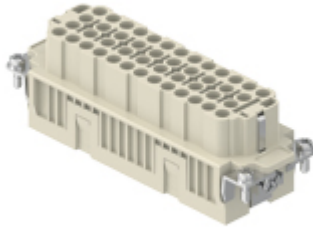



Part number

CQEF 46



Female insert, CQE series, crimp connection,
46 poles + PE, 16 A 500 V 6 kV 3, size
"104.27"

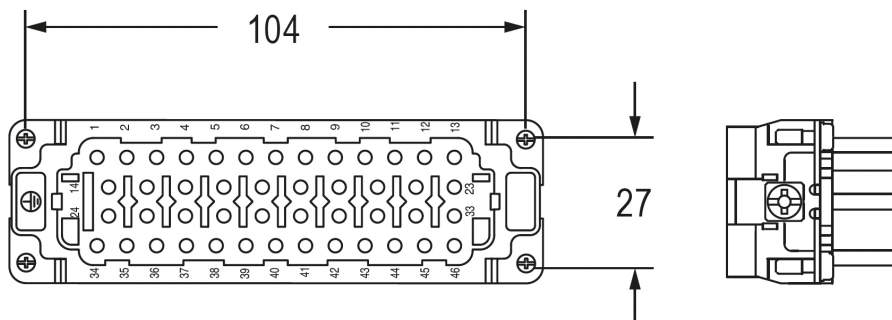
Product description		Material properties	
Product type	Insert	Main material	Polycarbonate (PC)
Series	CQE	Colour	RAL 7032 grey
Connection type	Crimp connection	RoHs conformity	Compliant
Gender	Female	China RoHs - EFUP	E
N. of poles	46 poles + 	REACH SVHC substances	No
Size	Size 104.27	Approvals / Standards	
Technical data		Reference standard	EN 61984:2009-06
Current	16 A	Certifications	CSA, CQC, DNV, BV, EAC
Voltage	500 V	UL	ECBT2
Rated impulse withstand voltage	6 kV	cUL	ECBT8
Pollution degree	3	General ordering information	
Rated voltage according to UL/CSA	600 V	EAN13 code	8015747037129
IP degree of protection	IP20 without enclosure, IP65/IP66/IP68/IP69 with enclosure	eCl@ss 8.1	27440205
Further technical details		ETIM 7.0	EC000438
Characteristics according to EN 61984	16A 500V 6kV 3; 16A 830V 8kV 2	Packaging Information	
Mating cycles	≥ 500	Packaging length	270,00 mm
Insulation resistance	≥ 10 GΩ	Packaging height	75,00 mm
Contact resistance	≤ 1 mΩ	Packaging width	180,00 mm
Weight	85,00 g	Packaging weight	2,92 kg
Operating temperature range (min, max)	-40 °C ... +125 °C	Packaging volume	3,65 dm ³
UL 94 flammability rating	V-0	Packaging description	Carton box
		Packaging quantity	30 Pcs
		Packaging EAN code	8015747208833
		Sub-packaging length	113,00 mm
		Sub-packaging height	36,00 mm
		Sub-packaging width	180,00 mm
		Sub-packaging weight	0,49 kg
		Sub-packaging volume	0,73 dm ³
		Sub-packaging description	Carton tray
		Sub-packaging quantity	5 Pcs
		Sub-packaging EAN barcode	8015747037136

Part number

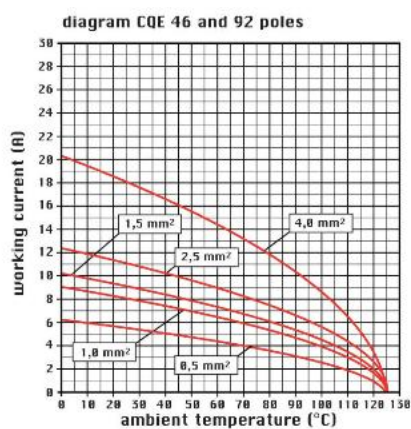
CQEF 46



Catalogue drawings



Catalogue drawings



Notes

CQEF/M 46 inserts:

- characteristics according to EN 61984:

(16A 500V 6kV 3)

(16A 830V) 8kV 2)

- rated voltage according to UL/CSA: 600V

- insulation resistance: > 10 GOhm

- ambient temperature limit: -40 °C ... +125 °C

- are made of self-extinguishing thermoplastic resin

UL 94 V0

- mechanical life: > 500 cycles

- contact resistance: < 1 mOhm

- for contact crimping instructions, please see the crimping tool

section (16A contacts, CCF, CCM and CC...AN series) .

- enclosures: size "104.27":

C-TYPE IP65/IP66

C7 IP67 stainless steel lever

V-TYPE IP65/IP66

stainless steel lever

T-TYPE IP65 insulating

JEI zinc-plated steel lever

BIG hoods

W-TYPE aggressive environments

EMC

central lever

IP68

panel supports: page:COB

Dimensions shown in mm are not binding and may be changed without notice.

California Proposition 65 Information



WARNING

This product can expose you to nickel compounds, known to the State of California to cause cancer and/or reproductive toxicity. For more information go to www.P65Warnings.ca.gov.
