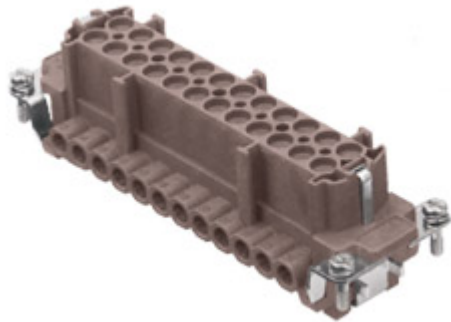


Part number

CNEF 24 RYN



Female insert, CNE RY series, screw terminal connection, 24 poles + PE (25-48), 16 A 500 V 6 kV 3, size "104.62", for applications up to 180°C, with plate

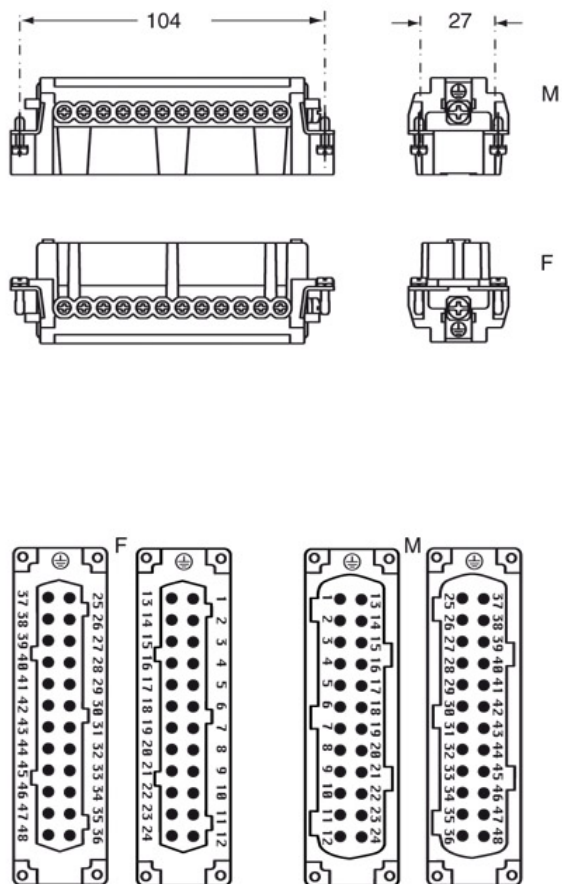
| Product description | | Material properties | |
|---|---|-------------------------------------|--|
| Product type | Insert | Main material | Polyphenylene sulfide (PPS) |
| Series | CNE RY | Other materials | Contacts: copper alloy |
| Connection type | Screw terminal connection | RoHs conformity | Compliant with exemption 6(c): copper alloy containing up to 4% lead by weight |
| Gender | Female | China RoHs - EFUP | 50 |
| N. of poles | 48 poles + | REACH SVHC substances | Yes Lead |
| Size | Size 104.62 | SCIP number | 1a9c93ff-0445-4a16-81e3-1609ac5274d6 |
| Specification | With plate For applications up to 180°C | Approvals / Standards | |
| Technical data | | Reference standard | EN 61984:2009-06 |
| Current | 16 A | Certifications | CSA, CQC, DNV, BV, EAC |
| Voltage | 500 V | UL | ECBT2 |
| Rated impulse withstand voltage | 6 kV | cUL | ECBT8 |
| Pollution degree | 3 | General ordering information | |
| Rated voltage according to UL/CSA | 600 V | EAN13 code | 8015747125727 |
| Wire cross-section | 0,50 mm ² - 4,00 mm ² | eCl@ss 8.1 | 27440205 |
| AWG size | 20 - 12 | ETIM 7.0 | EC000438 |
| Contact type | Turned silver plated | Packaging Information | |
| Pole numbering system | 25-48 | Packaging length | 270,00 mm |
| IP degree of protection | IP20 without enclosure, IP65 with enclosure | Packaging height | 75,00 mm |
| Further technical details | | Packaging width | 180,00 mm |
| Characteristics according to EN 61984 | 16A 500V 6kV 3; 16A 400/690V 6kV 2 | Packaging weight | 3,85 kg |
| Mating cycles | ≥ 500 | Packaging volume | 3,65 dm ³ |
| Insulation resistance | ≥ 10 GΩ | Packaging description | Carton box |
| Contact resistance | ≤ 1 mΩ | Packaging quantity | 30 Pcs |
| Weight | 116,00 g | Packaging EAN code | 8015747125901 |
| Operating temperature range (min, max) | -40°C ... +180°C | Sub-packaging length | 113,00 mm |
| Conductors stripping length | 7 mm | Sub-packaging height | 36,00 mm |
| UL 94 flammability rating | V-0 | Sub-packaging width | 180,00 mm |
| Torque for main contact | M3: 0.5 Nm; 4.4 lb.in (Ph0 or 0,8 x 4) | Sub-packaging weight | 0,64 kg |
| Tightening torque for PE connection | M3: 0,5 Nm; 4,4 lb.in (Ph0 or 0,8 x 4) | Sub-packaging volume | 0,73 dm ³ |
| Tightening torque for fixing screws | M3: 0.5 Nm; 4.4 lb.in (Ph0 or 0,8 x 4) | Sub-packaging description | Carton tray |
| | | Sub-packaging quantity | 5 Pcs |
| | | Sub-packaging EAN barcode | 8015747127684 |

Part number

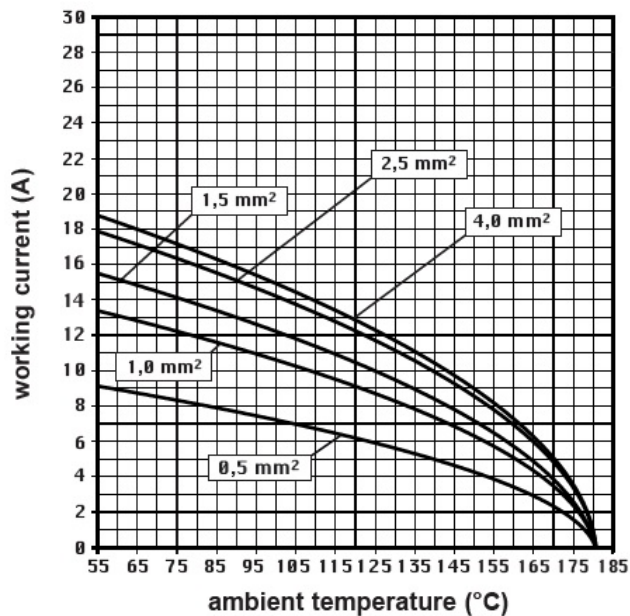
CNEF 24 RYN



Catalogue drawings



Derating curves



Notes

Dimensions shown in mm are not binding and may be changed without notice.

- CNE...RY: for non-prepared conductors
- inserts with plate for section conductors:
0.5 - 4 mm² - AWG 20 - 12
- conductors stripping length: 7 mm
- terminal screw torque: 0.5 Nm



California Proposition 65 Information



WARNING

This product can expose you to lead and its compounds, known to the State of California to cause cancer and/or reproductive toxicity. For more information go to www.P65Warnings.ca.gov.

California Proposition 65 Information



WARNING

This product can expose you to lead and its compounds, known to the State of California to cause cancer and/or reproductive toxicity. For more information go to www.P65Warnings.ca.gov.
