

Part number

# CHPX 50.29



Surface mounting housing, C-TYPE series, with 2 levers, Pg29 cable entry, size "66.40"

## Product description

<b>Product type</b>	Surface mounting housing
<b>Series</b>	C-TYPE
<b>Closing type</b>	With 2 levers
<b>Size</b>	Size "66.40"
<b>Cable entry</b>	With cable entry Pg29

## Technical data

<b>IP degree of protection</b>	IP66 / IP69
--------------------------------	-------------

## Further technical details

<b>Operating temperature range (min, max)</b>	-40°C...+125°C
---	----------------

## Material properties

<b>Other materials</b>	Lever: Stainless steel Gasket: NBR
<b>Colour</b>	RAL 7040 grey
<b>RoHs conformity</b>	Compliant
<b>China RoHs - EFUP</b>	E
<b>REACH SVHC substances</b>	No

## Approvals / Standards

<b>Certifications</b>	DNV, BV
<b>UL</b>	ECBT2
<b>cUL</b>	ECBT8

## General ordering information

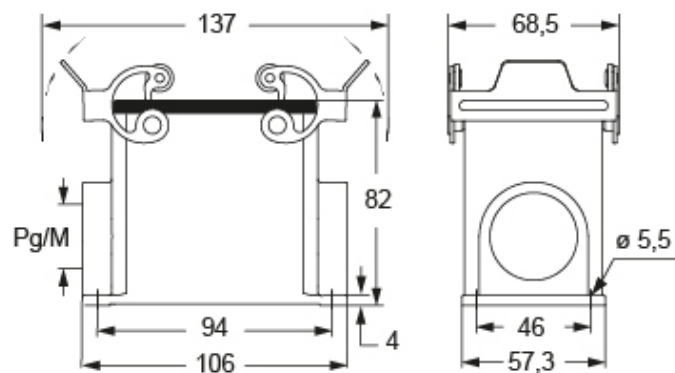
<b>EAN13 code</b>	8015747276320
-------------------	---------------

Part number

# CHPX 50.29



## Catalogue drawings



## Notes

Dimensions shown in mm are not binding and may be changed without notice.