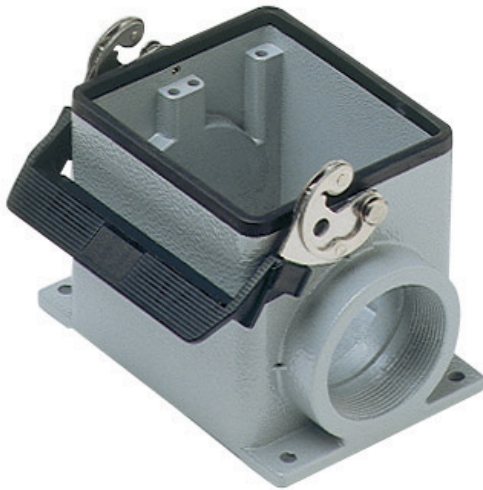


Part number

CHPT 32.6 L



Surface mounting housing, C-TYPE series, with 1 lever, 1" NPT cable entry, size "77.62"



| Product description | | Material properties | |
|---|----------------------------|----------------------------------|---|
| Product type | Surface mounting housing | Other materials | Lever: Stainless steel, polyamide (PA) Gasket: NBR |
| Series | C-TYPE | Colour | RAL 7040 grey |
| Closing type | With 1 lever | RoHS conformity | Compliant |
| Size | Size 77.62 | China RoHS - EFUP | E |
| Cable entry | With cable entry 1" NPT | REACH SVHC substances | No |
| Technical data | | Approvals / Standards | |
| IP degree of protection | IP65 / IP66 / IP69 | Certifications | DNV, BV |
| Further technical details | | UL | ECBT2 |
| Weight | 800,00 g | cUL | ECBT8 |
| Operating temperature range (min, max) | -40°C...+125°C | General ordering information | |
| | | EAN13 code | 8015747023726 |
| | | Packaging Information | |
| | | Packaging length | 475,00 mm |
| | | Packaging height | 200,00 mm |
| | | Packaging width | 150,00 mm |
| | | Packaging weight | 3,20 kg |
| | | Packaging volume | 14,25 dm ³ |
| | | Packaging description | Carton box |
| | | Packaging quantity | 4 Pcs |
| | | Packaging EAN code | 8015747140928 |
| | | Sub-packaging length | 116,00 mm |
| | | Sub-packaging height | 113,00 mm |
| | | Sub-packaging width | 142,00 mm |
| | | Sub-packaging weight | 0,80 kg |
| | | Sub-packaging volume | 1,86 dm ³ |
| | | Sub-packaging description | Carton box |
| | | Sub-packaging quantity | 1 Pcs |
| | | Sub-packaging EAN barcode | 8015747023733 |

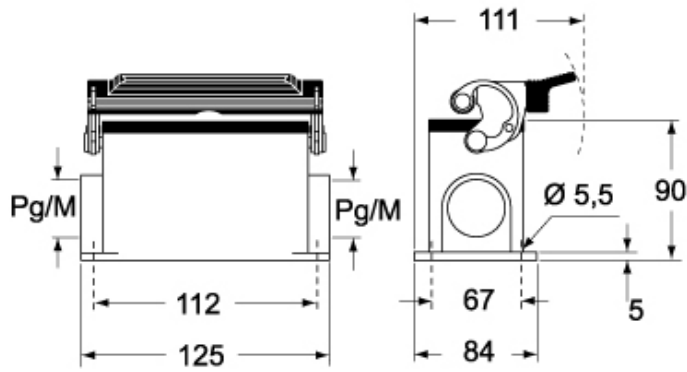
Part number

CHPT 32.6 L

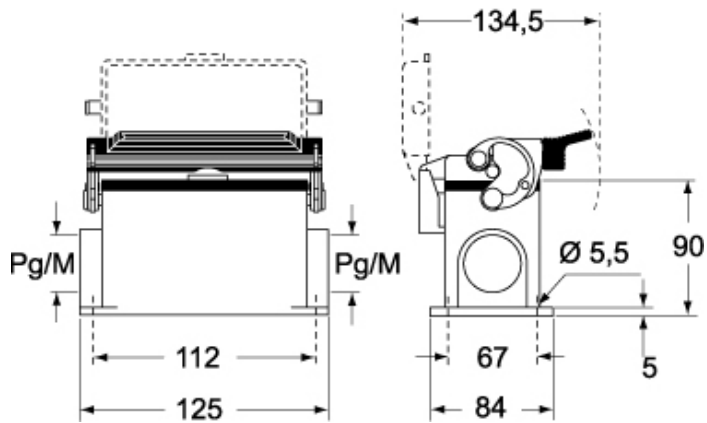


Catalogue drawings

CHP L CAP L - MHP L MAP L



CHP LS CAP LS - MHP LS MAP LS



Notes

Dimensions shown in mm are not binding and may be changed without notice.