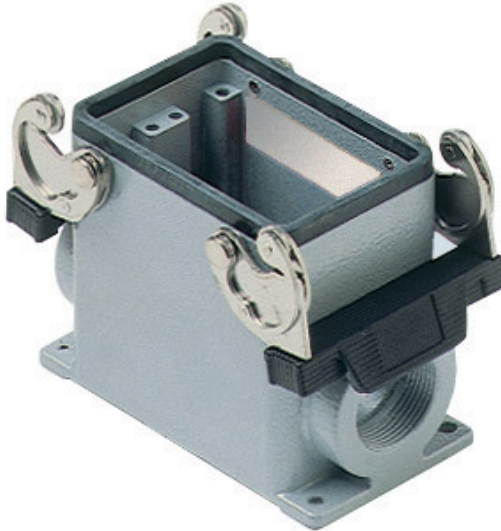


Part number

# CHP 50.29



Surface mounting housing, C-TYPE series, with 2 levers, Pg29 cable entry, size "66.40"



#### Product description

<b>Product type</b>	Surface mounting housing
<b>Series</b>	C-TYPE
<b>Closing type</b>	With 2 levers
<b>Size</b>	Size "66.40"
<b>Cable entry</b>	With cable entry Pg29

#### Technical data

<b>IP degree of protection</b>	IP65 / IP66 / IP69
--------------------------------	--------------------

#### Further technical details

<b>Weight</b>	456,00 g
<b>Operating temperature range (min, max)</b>	-40°C...+125°C

#### Material properties

<b>Colour</b>	RAL 7040 grey
<b>RoHs conformity</b>	Compliant
<b>China RoHs - EFUP</b>	E
<b>REACH SVHC substances</b>	No

#### Approvals / Standards

<b>Certifications</b>	DNV, BV
<b>UL</b>	ECBT2
<b>cUL</b>	ECBT8

#### General ordering information

<b>EAN13 code</b>	8015747023306
-------------------	---------------

#### Packaging Information

<b>Packaging length</b>	350,00 mm
<b>Packaging height</b>	105,00 mm
<b>Packaging width</b>	145,00 mm
<b>Packaging weight</b>	2,44 kg
<b>Packaging volume</b>	5,33 dm³
<b>Packaging description</b>	Carton box
<b>Packaging quantity</b>	5 Pcs
<b>Packaging EAN code</b>	8015747023313

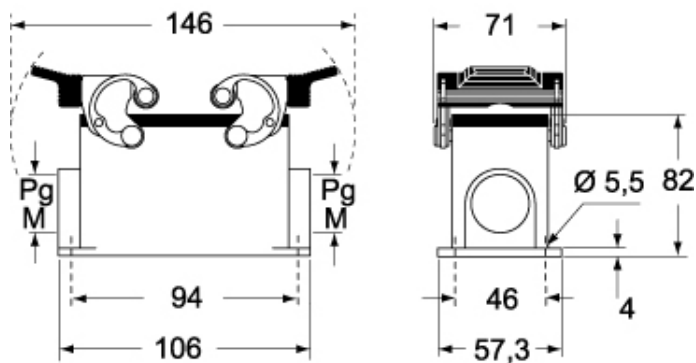
Part number

# CHP 50.29

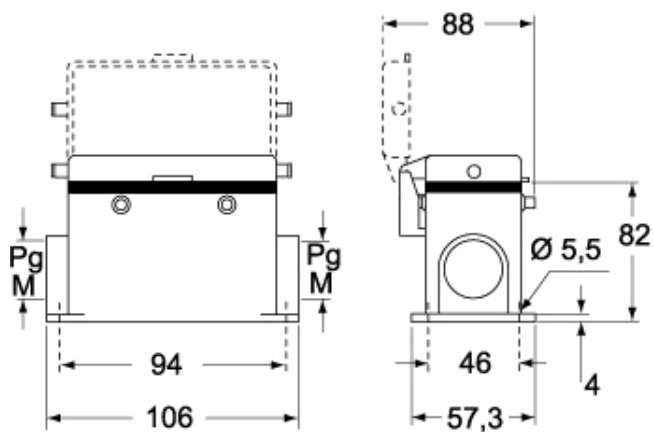


Catalogue drawings

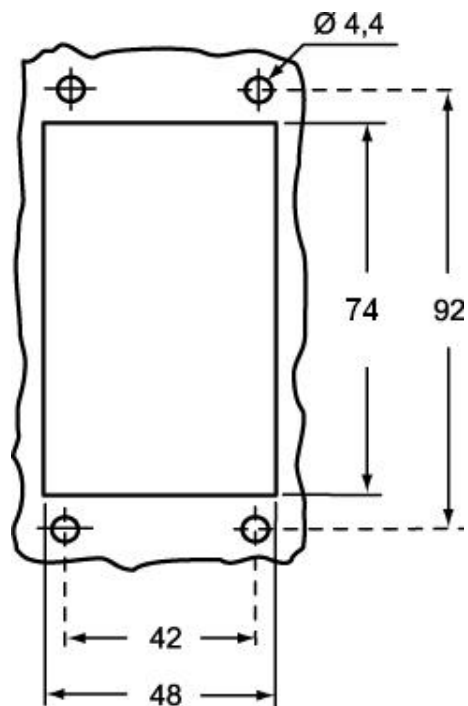
## CHP - MHP



## CHP CS - MHP CS



Catalogue drawings



## Notes

Dimensions shown in mm are not binding and may be changed without notice.