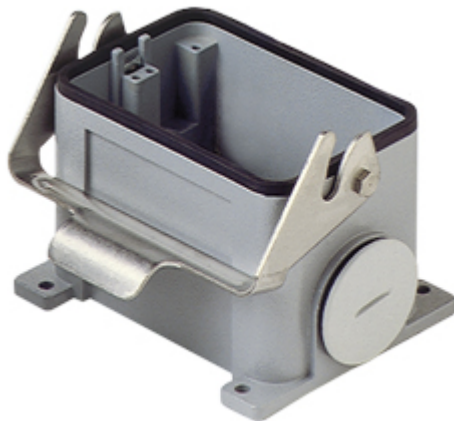


Part number

CHP 48 L



Surface mounting housing, C-TYPE series, with 1 lever, Pg36 cable entry, size "104.62"

Product description		Material properties	
Product type	Surface mounting housing	Other materials	Lever: Stainless steel, polyamide (PA) Gasket: NBR
Series	C-TYPE	Colour	RAL 7040 grey
Closing type	With 1 lever	RoHs conformity	Compliant
Size	Size "104.62"	China RoHs - EFUP	E
Cable entry	With cable entry Pg36	REACH SVHC substances	No
Technical data		Approvals / Standards	
IP degree of protection	IP65 / IP66 / IP69	Certifications	DNV, BV
Further technical details		UL	ECBT2
Weight	963,00 g	cUL	ECBT8
Operating temperature range (min, max)	-40°C...+125°C	General ordering information	
		EAN13 code	8015747019095
Packaging Information			
Packaging length	305,00 mm	Packaging height	180,00 mm
Packaging width	275,00 mm	Packaging weight	4,12 kg
Packaging volume	15,10 dm ³	Packaging description	Carton box
Packaging quantity	4 Pcs	Packaging EAN code	8015747019477
Sub-packaging weight	1,03 kg	Sub-packaging description	Plastic packaging
Sub-packaging quantity	1 Pcs	Sub-packaging EAN barcode	8015747187923

Part number

CHP 48 L



Notes

Dimensions shown in mm are not binding and may be changed without notice.
