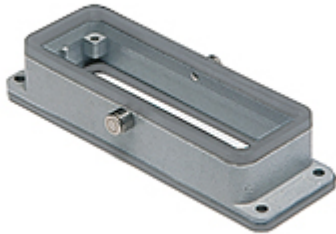


Part number

CHIS 24 YC



Bulkhead mounting housing, EMC series, with 2 pegs, size "104.27"

Product description		Material properties	
Product type	Bulkhead mounting housing	RoHs conformity	Compliant
Series	EMC	China RoHs - EFUP	E
Closing type	With 2 pegs	REACH SVHC substances	No
Size	Size "104.27"	Approvals / Standards	
Cable entry	Without cable entry	Certifications	DNV, BV
Technical data		UL	ECBT2
IP degree of protection	IP65	cUL	ECBT8
Further technical details		General ordering information	
Weight	102,50 g	EAN13 code	8015747192231
Operating temperature range (min, max)	-40°C...+125°C	Packaging Information	
		Sub-packaging weight	0,51 kg
		Sub-packaging description	Plastic packaging
		Sub-packaging quantity	5 Pcs
		Sub-packaging EAN barcode	8015747192798

Part number

CHIS 24 YC



Notes

Dimensions shown in mm are not binding and may be changed without notice.
