

1

2

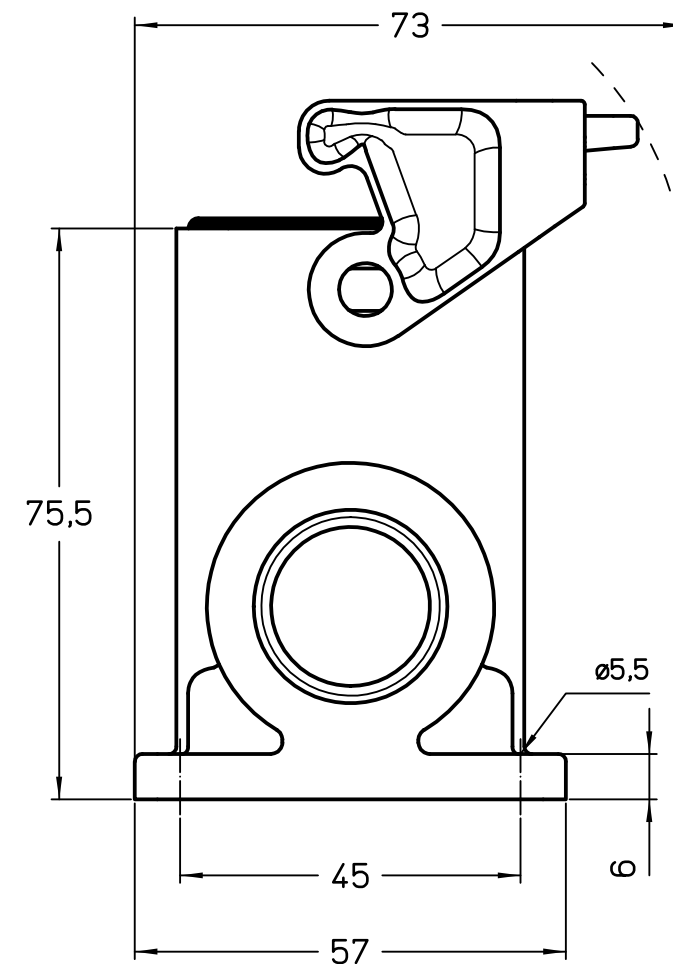
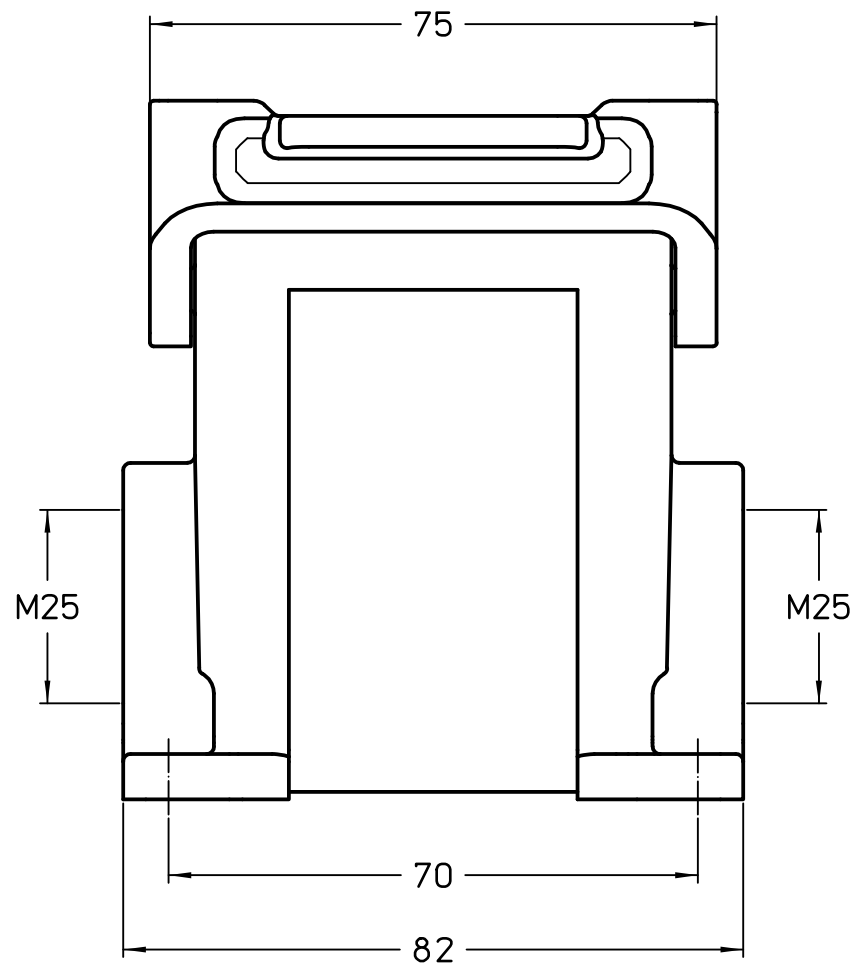
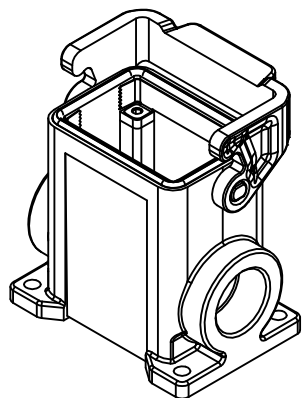
3

A

A

B

B



	Dimensions in mm
Original Size A4	TAPC06L225B
Date 14/02/22	Insulating surface mounting housing, size "44.27", 2x M25 side entries, with 1 lever, with integrated PE jumpers - HYGIENIC-COLD
Sign. G. Renna	

Simplified representation with dimensions without tolerance

Scale
1:1



1

2

3