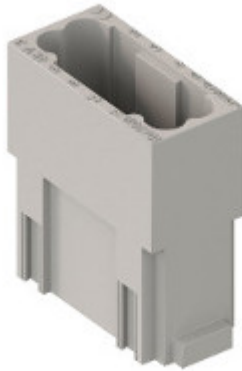



Part number

CX 12 DM



Brief description:

male insert, 12 poles, crimp connection, 10A, 250V, 1 module, modular units MIXO series

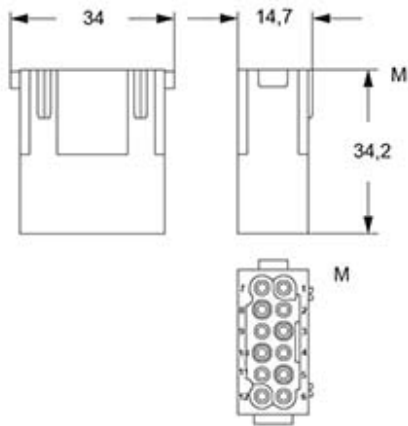
Product description		Approvals / Standards	
Model	male insert	Reference standard	EN 61984:2009-06
Version	Crimp connection	Quality mark	 DNV-GL, EAC
Product type	for male contacts 10A	Conformity	CQC, CE
Family	MIXO series, customizable inserts	General ordering information	
Size	1 module	EAN13 code	8015747042062
N. of poles	12 poles	Tariff number	85369095
Technical data		Packaging Information	
Current	10 A (A.C.)	Packaging length	180,00 mm
Voltage	250 V	Packaging height	130,00 mm
Rated impulse withstand voltage	4 kV	Packaging width	150,00 mm
Pollution degree	3	Packaging weight	0,76 kg
Operating temperature range (min, max)	-40°C ... +125°C	Packaging volume	3,51 dm ³
Contacts material	Silver plated, gold plated	Packaging description	Carton box
Mating cycles	≥ 500	Packaging quantity	60 Pcs
IP degree of protection	IP20 without enclosure, IP65/IP66/IP68/IP69 with enclosure	Packaging EAN code	8015747221320
Further technical details		Sub-packaging length	35,00 mm
Characteristics according to EN 61984	10A 250V 4kV 3	Sub-packaging height	40,00 mm
Insulation resistance	≥ 10 GΩ	Sub-packaging width	155,00 mm
Contact resistance	≤ 3 mΩ	Sub-packaging weight	0,13 kg
Rated voltage according to UL/CSA	600V	Sub-packaging volume	0,22 dm ³
UL 94 flammability rating	V-0	Sub-packaging description	Carton tray
Weight	8,80 g	Sub-packaging quantity	10 Pcs
		Sub-packaging EAN barcode	8015747042079

Part number

CX 12 DM



Catalogue drawings



Derating curves

