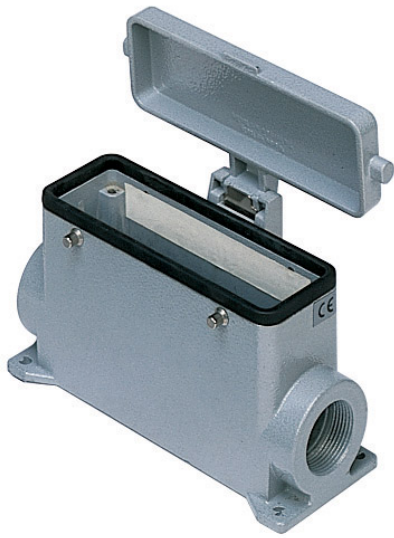


Part number

MMAP 16CS240



Surface mounting housing, 830V series, with 4 pegs, M40 x 2 cable entry, size "104.27", high construction, with metal cover

Product description

Product type	Surface mounting housing
Series	830V
Closing type	With 4 pegs
Size	Size "104.27"
Cable entry	With cable entry M40 x 2
Specification	High construction, with metal cover

Technical data

IP degree of protection	IP65
--------------------------------	------

Further technical details

Operating temperature range (min, max)	-40°C...+125°C
---	----------------

Material properties

Colour	RAL 7040 grey
RoHs conformity	Compliant
China RoHs - EFUP	E
REACH SVHC substances	No

Approvals / Standards

Certifications	DNV, BV
UL	ECBT2
cUL	ECBT8

General ordering information

EAN13 code	8015747057868
-------------------	---------------

Packaging Information

Sub-packaging description	Plastic packaging
Sub-packaging quantity	5 Pcs
Sub-packaging EAN barcode	8015747106658

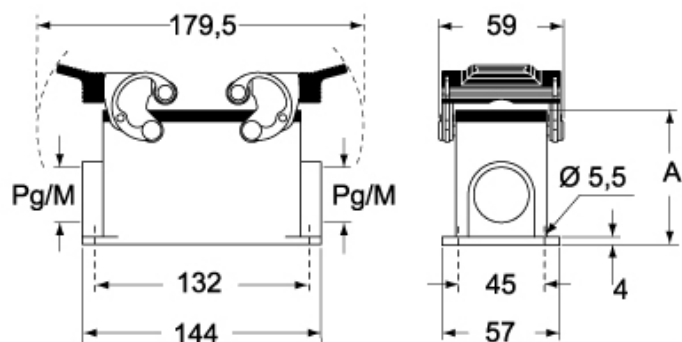
Part number

MMAP 16CS240

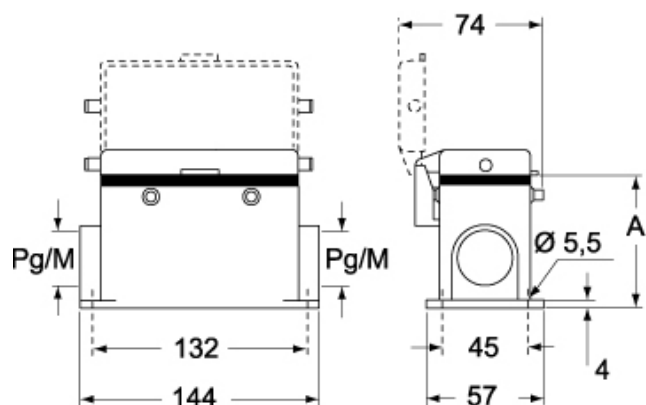


Catalogue drawings

CMP CMAP - MMP MMAP



CMP CS/CP CMAP CS/CP - MMP CS/CP MMAP CS/CP



	A
CMP / MMP	63
CMAP / MMAP	80
CMP CS / MMP CS	63
CMAP CS / MMAP CS	80
CMP CP / MMP CP	63
CMAP CP / MMAP CP	80

Notes