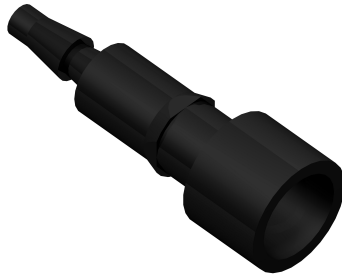


Part number

CX 3.0 VC



Female pneumatic contact, with closing valve,
for tubes with internal diameter 3 mm

Product description

Product type	Pneumatic contact
Gender	Female
Specification	With closing valve For tubes with internal diameter 3 mm

Further technical details

Weight	0,65 g
Operating temperature range (min, max)	-40°C ... +125°C

Material properties

Main material	Polyamide (PA)
RoHs conformity	Compliant
China RoHs - EFUP	E
REACH SVHC substances	No

General ordering information

EAN13 code	8015747042123
eCl@ss 8.1	27440204
ETIM 7.0	EC000796

Packaging Information

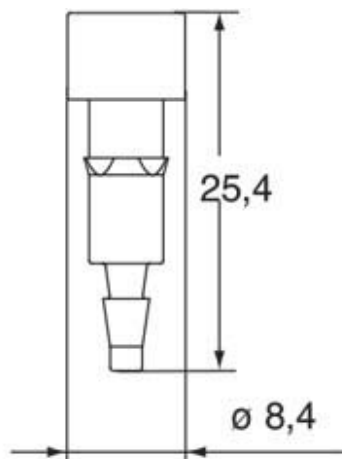
Sub-packaging description	Plastic bag
Sub-packaging quantity	3 Pcs
Sub-packaging EAN barcode	8015747042130

Part number

CX 3.0 VC



Catalogue drawings



Notes