

Part number

JMPAP 24.232



Surface mounting housing, JEI®-P series, with 2 levers, M32 x 2 cable entry, size "104.27", high construction

Product description

Product type	Surface mounting housing
Series	JEI®-P
Closing type	With 2 levers
Size	Size "104.27"
Cable entry	With cable entry M32 x 2
Specification	High construction

Technical data

IP degree of protection	IP65
--------------------------------	------

Further technical details

Operating temperature range (min, max)	-40°C...+125°C
---	----------------

Material properties

Other materials	Lever: Polyamide (PA) Gasket: NBR
Colour	RAL 7040 grey

Approvals / Standards

Certifications	DNV, BV
-----------------------	---------

General ordering information

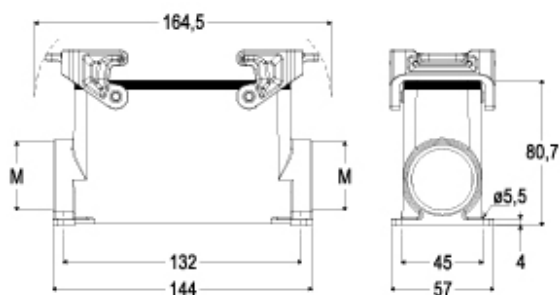
EAN13 code	8015747219082
-------------------	---------------

Part number

JMPAP 24.232



Catalogue drawings



Notes