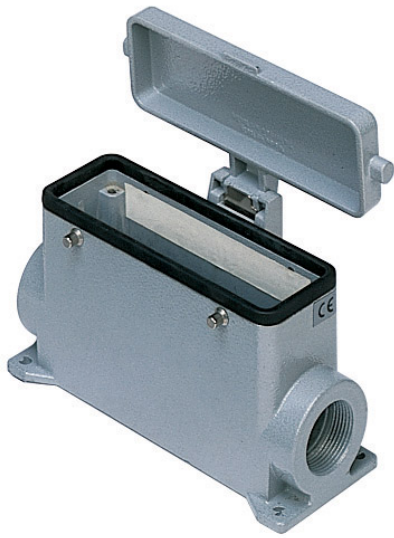


Part number

# CMP 16 CS



Surface mounting housing, 830V series, with 4 pegs, Pg21 cable entry, size "104.27", with metal cover

## Product description

Product type	Surface mounting housing
Series	830V
Closing type	With 4 pegs
Size	Size "104.27"
Cable entry	With cable entry Pg21
Specification	With metal cover

## Technical data

IP degree of protection	IP65
-------------------------	------

## Further technical details

Weight	368,00 g
Operating temperature range (min, max)	-40°C...+125°C

## Material properties

Colour	RAL 7040 grey
RoHs conformity	Compliant
China RoHs - EFUP	E
REACH SVHC substances	No

## Approvals / Standards

Certifications	DNV, BV
UL	ECBT2
cUL	ECBT8

## General ordering information

EAN13 code	8015747031592
------------	---------------

## Packaging Information

Sub-packaging weight	1,84 kg
Sub-packaging description	Plastic packaging
Sub-packaging quantity	5 Pcs
Sub-packaging EAN barcode	8015747031608

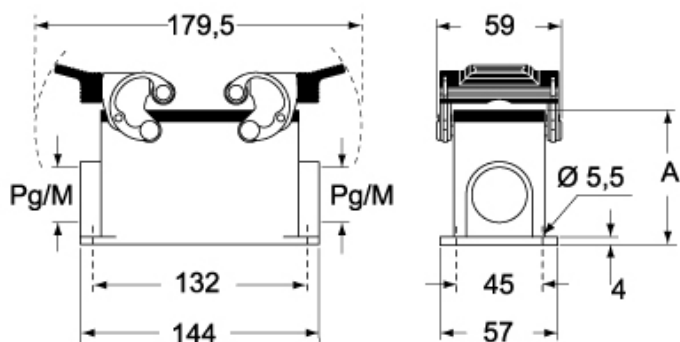
Part number

# CMP 16 CS

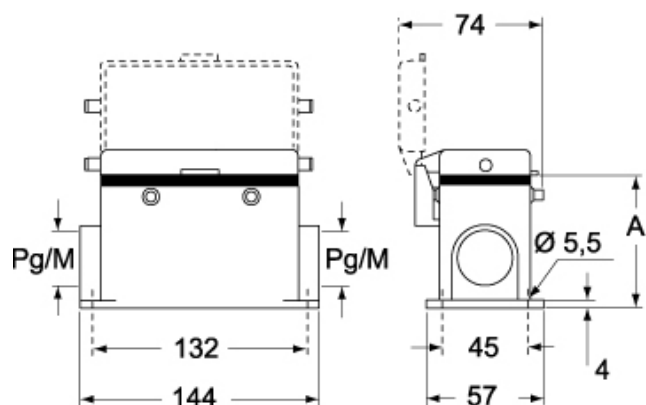


Catalogue drawings

## CMP CMAP - MMP MMAP



## CMP CS/CP CMAP CS/CP - MMP CS/CP MMAP CS/CP



	<b>A</b>
<b>CMP / MMP</b>	63
<b>CMAP / MMAP</b>	80
<b>CMP CS / MMP CS</b>	63
<b>CMAP CS / MMAP CS</b>	80
<b>CMP CP / MMP CP</b>	63
<b>CMAP CP / MMAP CP</b>	80

Notes