


Part number

RSHM 06



Male insert, RSH series, SQUICH® spring terminal connection without tools, 6 poles + PE, 16 A 500 V 6 kV 3, size "44.27", HNM - High Number of Matings version

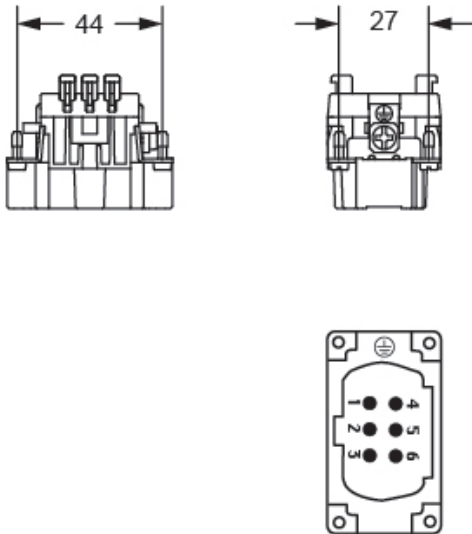
Product description		Material properties	
Product type	Insert	Main material	Polycarbonate (PC)
Series	RSH	Other materials	Contacts: copper alloy
Connection type	SQUICH® spring terminal connection without tools	Colour	RAL 7032 grey
Gender	Male	RoHs conformity	Compliant with exemption 6(c): copper alloy containing up to 4% lead by weight
N. of poles	6 poles + 	China RoHs - EFUP	50
Size	Size 44.27	REACH SVHC substances	Yes
Specification	HNM - High Number of Matings version	Lead	Lead
Technical data		SCIP number	1a9c93ff-0445-4a16-81e3-1609ac5274d6
Current	16 A	Approvals / Standards	
Voltage	500 V	Certifications	DNV, EAC
Rated impulse withstand voltage	6 kV	General ordering information	
Pollution degree	3	EAN13 code	8015747000598
Rated voltage according to UL/CSA	600 V	eCl@ss 8.1	27440205
Wire cross-section	0,14 mm² - 2,50 mm²	ETIM 7.0	EC000438
AWG size	26 - 14	Packaging Information	
Contact type	Turned gold plated	Packaging length	245,00 mm
IP degree of protection	IP20 without enclosure, IP65/IP66/IP68/IP69 with enclosure	Packaging height	165,00 mm
Further technical details		Packaging width	215,00 mm
Characteristics according to EN 61984	16A 500V 6kV 3	Packaging weight	3,52 kg
Mating cycles	≥ 10000	Packaging volume	8,69 dm³
Insulation resistance	≥ 10 GΩ	Packaging description	Carton box
Contact resistance	≤ 3 mΩ	Packaging quantity	60 Pcs
Weight	57,00 g	Packaging EAN code	8015747000604
Operating temperature range (min, max)	-40°C...+125°C	Sub-packaging length	197,00 mm
Conductors stripping length	7 mm	Sub-packaging height	44,00 mm
UL 94 flammability rating	V-0	Sub-packaging width	113,00 mm
		Sub-packaging weight	0,59 kg
		Sub-packaging volume	0,98 dm³
		Sub-packaging description	Carton tray
		Sub-packaging quantity	10 Pcs
		Sub-packaging EAN barcode	8015747005784

Part number

RSHM 06

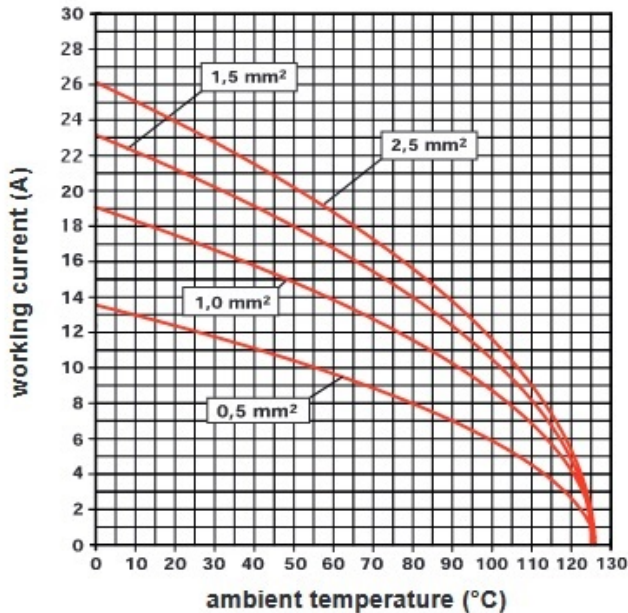


Catalogue drawings



Derating curves

RSH 06 poles connector inserts
Maximum current load derating diagram



Notes

California Proposition 65 Information



WARNING

This product can expose you to lead and its compounds, known to the State of California to cause cancer and/or reproductive toxicity. For more information go to www.P65Warnings.ca.gov.

California Proposition 65 Information

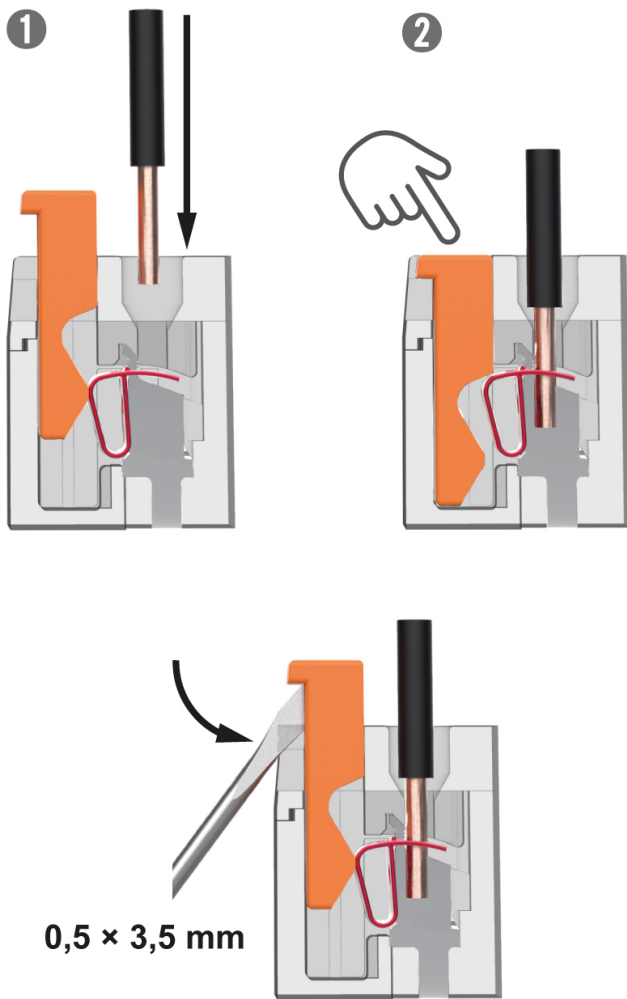


WARNING

This product can expose you to lead and its compounds, known to the State of California to cause cancer and/or reproductive toxicity. For more information go to www.P65Warnings.ca.gov.

Dimensions shown in mm are not binding and may be changed without notice.

SQUICH® connection with actuator button



Reopening
