

Part number

MKAXE IAF25



Angled Bulkhead mounting housing, E-Xtreme® C-TYPE series, with 1 lever, M25 fixing thread, size "21.21"

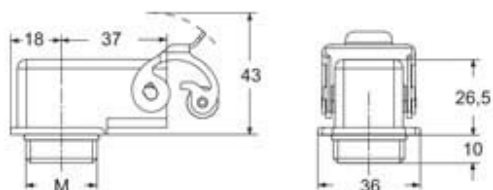
Product description		Material properties	
Product type	Angled bulkhead mounting housing	Main material	Zinc die-cast
Series	E-Xtreme® C-TYPE	Other materials	Lever: Stainless steel
Closing type	With 1 lever	Colour	RAL 7040 grey
Size	Size "21.21"	RoHs conformity	Compliant
Cable entry	Round threaded appendix M25	China RoHs - EFUP	E
Technical data		REACH SVHC substances	No
IP degree of protection		Approvals / Standards	
IP44 - IP66 / IP67 / IP69 with CKR 65 (D)		Certifications	DNV, BV
Further technical details		UL	ECBT2
Operating temperature range (min, max)		cUL	ECBT8
-40°C...+125°C		General ordering information	
		EAN13 code	8015747255066
		eCl@ss 8.1	27440202
		ETIM 7.0	EC000437

Part number

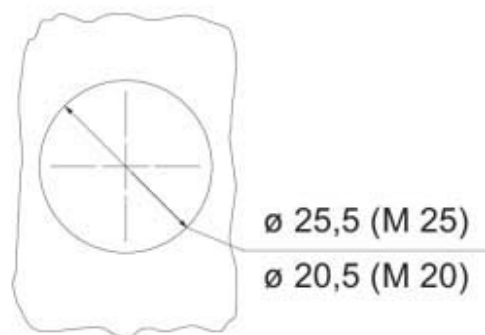
MKAXE IAF25



Catalogue drawings



Catalogue drawings



Notes

Dimensions shown in mm are not binding and may be changed without notice.
