

Part number

# MHPXW 50.32



Surface mounting housing, W-TYPE series,  
with 2 levers, M32 cable entry, size "66.40"

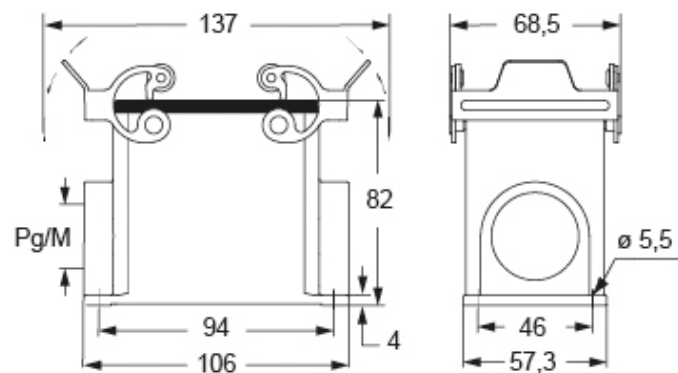
Product description		Material properties	
Product type	Surface mounting housing	Other materials	Lever: Stainless steel, polyamide (PA)
Series	W-TYPE	Colour	RAL 9005 black
Closing type	With 2 levers	RoHs conformity	Compliant
Size	Size "66.40"	China RoHs - EFUP	E
Cable entry	With cable entry M32	REACH SVHC substances	No
Technical data		Approvals / Standards	
IP degree of protection	IP65 / IP66 / IP69	Certifications	DNV, BV
Further technical details		UL	ECBT2
Operating temperature range (min, max)	-40°C...+125°C	cUL	ECBT8
General ordering information			
EAN13 code	8015747276436		
eCl@ss 8.1	27440202		
ETIM 7.0	EC000437		

Part number

# MHPXW 50.32



## Catalogue drawings



## Notes

Dimensions shown in mm are not binding and may be changed without notice.