

Part number

MGPE 10.32



Surface mounting housing, E-Xtreme® IP68 series, for 2 screws, M32 cable entry, size "57.27"

Product description

Product type	Surface mounting housing
Series	E-Xtreme® IP68
Closing type	With 2 screws
Size	Size 57.27
Cable entry	With cable entry M32

Technical data

IP degree of protection	IP66 / IP68 / IP69
--------------------------------	--------------------

Further technical details

Operating temperature range (min, max)	-40°C...+125°C
---	----------------

Material properties

Other materials	Gasket: FKM
Colour	RAL 7016 grey
RoHs conformity	Compliant
China RoHs - EFUP	E
REACH SVHC substances	No

Approvals / Standards

Certifications	DNV, BV
UL	ECBT2
cUL	ECBT8

General ordering information

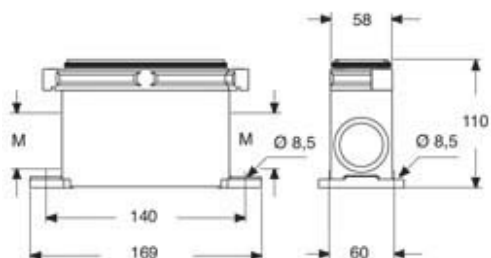
EAN13 code	8015747254519
eCl@ss 8.1	27440202
ETIM 7.0	EC000437

Part number

MGPE 10.32



Catalogue drawings



Notes

Dimensions shown in mm are not binding and may be changed without notice.
