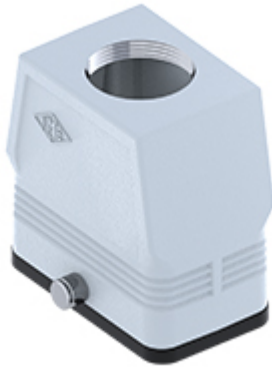


Part number

MFV 10 GYC25



Hood, CENTRAL LEVER series, with 2 pegs,
M25 top cable entry without adapter, size
"57.27", high construction

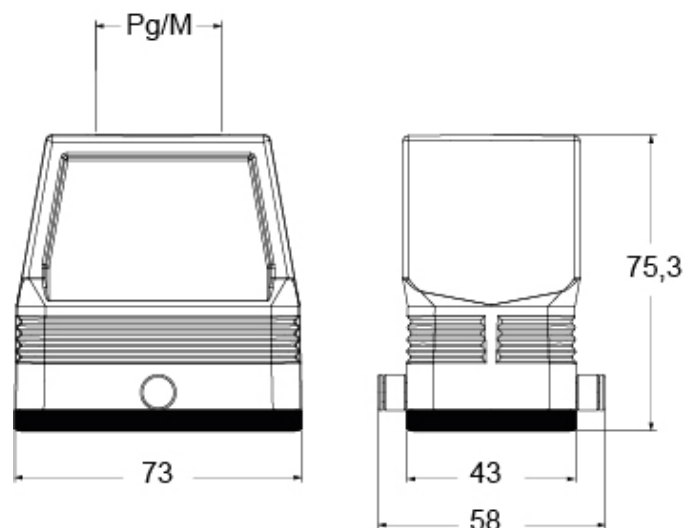
| Product description | | Material properties | |
|--|------------------------|------------------------------|---------------|
| Product type | Hood | Colour | RAL 7040 grey |
| Series | CENTRAL LEVER | RoHs conformity | Compliant |
| Closing type | With 2 pegs | China RoHs - EFUP | E |
| Size | Size 57.27 | REACH SVHC substances | No |
| Cable entry | Top cable entry M25 | Approvals / Standards | |
| Specification | High construction | UL | ECBT2 |
| Technical data | | cUL | ECBT8 |
| IP degree of protection | IP65 | General ordering information | |
| Further technical details | | EAN13 code | 8015747266994 |
| Operating temperature range (min, max) | -40°C...+125°C | eCl@ss 8.1 | 27440202 |
| | | ETIM 7.0 | EC000437 |

Part number

MFV 10 GYC25



Catalogue drawings



Notes

Dimensions shown in mm are not binding and may be changed without notice.