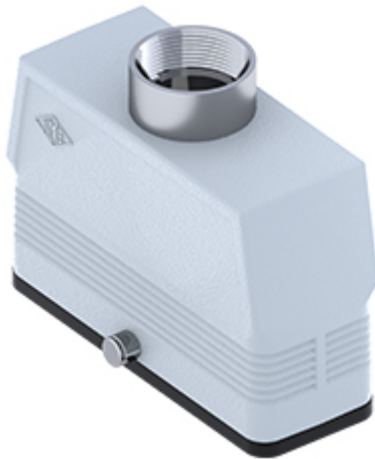


Part number

# MAV 24 GYC40



Hood, CENTRAL LEVER series, with 2 pegs, M40 top cable entry, size "104.27", high construction

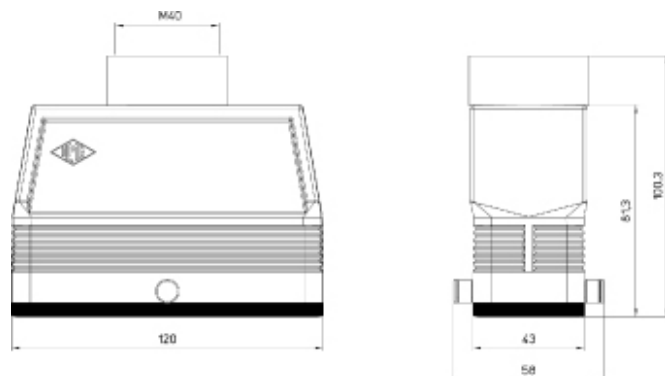
Product description		Material properties	
Product type	Hood	Other materials	Gasket: NBR
Series	CENTRAL LEVER	Colour	RAL 7040 grey
Closing type	With 2 pegs		Compliant with exemption
Size	Size "104.27"	RoHs conformity	6(c): copper alloy containing up to 4% lead by weight
Cable entry	Top cable entry with adapter M40	China RoHs - EFUP	50
Specification	High construction	REACH SVHC substances	Yes Lead
Technical data		SCIP number	15deaf78-e939-4401-a0b0-e2228ca32a03
IP degree of protection	IP65	Approvals / Standards	
Further technical details		UL	ECBT2
Weight	412,50 g	cUL	ECBT8
Operating temperature range (min, max)	-40°C...+125°C	General ordering information	
		EAN13 code	8015747259187
		eCl@ss 8.1	27440202
		ETIM 7.0	EC000437
		Packaging Information	
		Sub-packaging weight	2,06 kg
		Sub-packaging description	Plastic packaging
		Sub-packaging quantity	5 Pcs
		Sub-packaging EAN barcode	8015747259194

Part number

# MAV 24 GYC40



## Catalogue drawings



## Notes

Dimensions shown in mm are not binding and may be changed without notice.