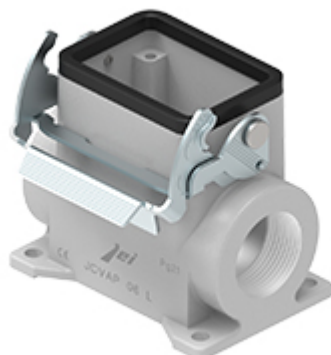


Part number

# JCVAP 06 L



Surface mounting housing, JEI®-V series, with 1 lever, Pg21 cable entry, size "44.27", high construction

Product description		Material properties	
Product type	Surface mounting housing	Colour	RAL 7040 grey
Series	JEI®-V	Approvals / Standards	
Closing type	With 1 lever	Certifications	DNV, BV
Size	Size 44.27	UL	ECBT2
Cable entry	With cable entry Pg21	cUL	ECBT8
Specification	High construction	General ordering information	
Technical data		EAN13 code	8015747218634
IP degree of protection	IP65 / IP66 / IP69		
Further technical details			
Operating temperature range (min, max)	-40°C...+125°C		

Part number

# JCVAP 06 L



---

## Notes

Dimensions shown in mm are not binding and may be changed without notice.

---